

2000series Aluminum Bearings with Housings

Double Bearings with Pilot, Non-Retained, L Selectable



RoHS 10

Type			Material		Surface Treatment
Round	Square	Compact	Bearing	Housing	Housing
BGRYB	BGSYB	BGCYB	Steel	S45C Equivalent	Black Oxide
BGRY	BGSY	BGCY		2000series Aluminum Alloy	Electroless Nickel Plating
BARY	BASY	BACY			Clear Anodize
SBARY	SBASY	SBACY	* Stainless Steel	Aluminum Alloy	-
SBGRY	SBGSY	SBGCY	SUS304	SUS304	

* Bearings with Rubber Seals (VV and DD) are all made of steel.

6.3 / (1.6 /)

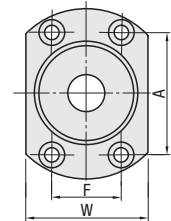
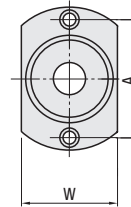
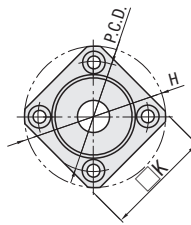
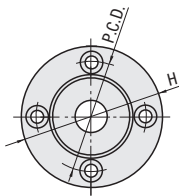
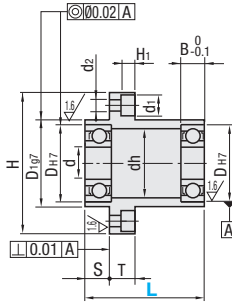
Round

Square

Compact

d3-17

d20-50



Bearing Accuracy: JIS B 1514 Class 0

Type	Part Number		L Selection	S	d	DH7	Tolerance	B	H	W	T	dh	Dh197	Tolerance	P.C.D.	K	A	F	d1	d2	H1
	Type	Bearing No.																			
(Round)		623	20 30	5	3	10	+0.015	4	33	16	7	7	14	-0.006	24	27	24		6.5	3.5	3.1
		624	20 30	5	4	13		5	35	18		9	17	-0.024	26	28	26				
		605	25 35	5	14		+0.018	5	38	20		10	18		28	30	28				
		625	35 40	10	5	16	0	5	40	22		12	20		30	31	30		8	4.5	4.1
		606	25 40	5	17			6	41	23		13	21	-0.007	31	32	31				
		626	35 45	10	6	19	+0.021	6	44	25		15	24	-0.028	34	34	34				
		678	20 30	5	12		+0.018	3.5	35	18		10	16	-0.028	26	28	26		6.5	3.5	3.1
		698	25 35	5	19			6	44	25		15	24		34	34	34				
		608	25 35	5	8	22	+0.021	7	47	29		18	27		37	36	37				
		628	35 45	10	24		0	8	50	32		20	30	-0.007	40	37	40				
		6700	20 30	5	15		+0.018	4	40	22		12	19	-0.028	30	31	30				
		6800	20 30	5	19			5	44	25		15	24		34	34	34				
		6900	25 40	5	10	22	+0.021	6	47	29		19	27		37	36	37				
		6000	35 50	10	26		0	8	52	34		22	32	-0.009	42	39	42				
		6200	45 55	15	30			9	56	38		24	36	-0.034	46	42	46		8	4.5	4.1
	6701	20 30	5	18		+0.018	4	44	25		15	23		34	34	34					
	6801	25 35	5	21			5	47	29		17	26	-0.007	37	36	37					
	6901	35 50	10	12	24	+0.021	6	50	31		21	30	-0.028	40	38	40					
	6001	35 50	10	28		0	8	54	36		24	34	-0.009	44	40	44					
	6201	45 55	15	32		+0.025	10	58	40		26	38	-0.034	48	43	48					
	6702	25 35	10	21			4	47	29		18	26	-0.007	37	36	37					
	6802	25 35	10	24		+0.021	5	50	32		20	30	-0.028	40	37	40					
	6902	35 60	10	15	28	0	7	59	37		25	35		47	45	47					
	6002	45 65	15	32		+0.025	9	62	40		28	38		50	46	50		9.5	5.5	5.1	
	6202	50 65	15	35		0	11	66	44		29	42		54	49	54					
	6803	30 40	10	26		+0.021	5	52	34		22	32		42	39	42		8	4.5	4.1	
	6903	45 55	15	30		0	7	60	38		27	36	-0.009	48	46	48					
	6003	50 65	15	35		+0.025	10	66	44		31	42	-0.034	54	50	54		9.5	5.5	5.1	
	6203	60 70	20	40		0	12	72	50		34	48		60	54	60					
	6704	30 40	10	27		+0.021	4	59	35		23	33		47	45	41	23	8	4.5	4.1	
	6804	35 50	10	32			7	62	40		28	38		50	46	44	24	9.5	5.5	5.1	
	6904	50 65	15	37		+0.025	9	72	47		34	45		59	54	54	24				
	6004	60 70	20	42		0	12	77	54		36	50	-0.034	64	59	56	32				
	6204	65 70	20	47		+0.025	14	81	58		40	54	-0.010	68	62	59	34	11	6.6	6.1	
	6805	35 50	15	37			7	72	47		34	45	-0.009	59	54	54	24				
	6905	35 50	15	42			9	77	54		36	50	-0.034	64	59	55	32				
	6005	60 80	20	47			12	88	58		41	54	-0.010	72	67	63	36				
	6205	65 80	20	52		+0.030	15	94	64		45	60	-0.040	78	72	68	39	14	9	8.1	
	6806	35 50	15	42		+0.025	7	77	54		36	50	-0.034	64	59	56	32	11	6.6	6.1	
	6906	35 50	15	47		0	9	88	58		41	54		72	67	62	36				
	6006	60 80	20	55			13	96	66		48	62	-0.010	80	73	70	40	14	9	8.1	
	6206	70 80	20	62			16	104	74		55	70	-0.040	88	79	77	44				
	6007	70 80	20	62			14	104	74		55	70		88	79	75	44				
	6207	70 90	20	72		+0.030	17	126	88		64	84	-0.012	105	95	92	51	17.5	11	11	
	6008	80 90	25	68		0	15	114	82		60	78	-0.010	96	86	80	54	14	9	8.1	
	6208	70 90	20	80			18	134	96		74	92		113	102	98	56				
	6010	80	20	80			16	134	96		74	92	-0.012	113	-	98	56	17.5	11	11	
	6210	100	20	90		+0.035	20	147	110		83	106	-0.047	126	-	104	72				

*1 Check for available sizes in the price list.

*2 Bearings with Rubber Seals are all made of steel.