

Lead Screw Support Units Square Type

Fixed Side Radial Bearing Type

When using Fixed Side Support Units combined with Support Side Support Units

Support Unit Sets combined Fixed Side Support Unit with Support Side Support Unit are available for lower prices.
Add -SET to part number of Fixed Side Support Units to select Support Unit Sets.



☑ Listed Support Side Support Unit Sets are also available by adding -SET to part number of Fixed Side Support Units on P.792.

Fixed Side Support Unit



Stop Plate Set



Stop Plate Set for Digital Position Indicators Compact Mount



Stop Plate Set for Large Position Indicator Mount



Support Side Support Unit (MTUZ)



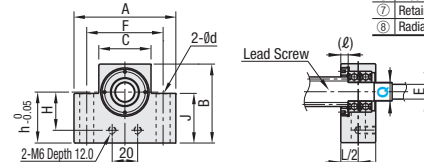
Q	Fixed Side Support Unit		Accessory Dimensions		
	Bearing Nut	Collar Dimensions	I.D.	O.D.	Thickness
8	M8x1.0	14	8	11.5	3
10	M10x1.0	17	10	14	3
12	M12x1.0	19	12	15	3
15	M15x1.0	22	15	20	3

Support Unit Support Side Set	Support Unit Fixed Side	Type		
		Stop Plate Set	Stop Plate Set for Digital Position Indicators Compact Mount	Stop Plate Set for Large Position Indicator Mount
Not included	MTWZ	MTWZ-S	MTWZ-CP	MTWZ-LP
Included	MTWZ-SET	MTWZ-S-SET	MTWZ-CP-SET	MTWZ-LP-SET

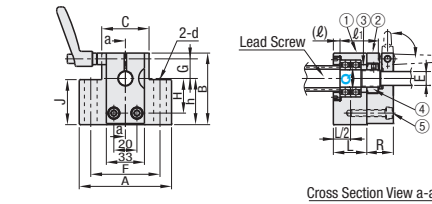
Parts Details

Number	Part Name	Quantity			Material	Surface Treatment
		MTWZ	-S/-CP/-LP	-SET		
①	Fixed Side Support Unit	1	1	1	S45C	
②	Collar	1	1	1	SS400	
③	Bearing Nut (w/ Thread Protector)	1	1	1	SS400	Black Oxide
④	Stop Plate Set	-	1	(1)	SS400	
⑤	Hex Socket Head Cap Screw	-	2	(2)	SCM435	
⑥	Support Side Support Unit	-	-	1	S45C	
⑦	Retaining Ring for Shaft	-	-	1	Spring Steel	* No treatment
⑧	Radial Bearing	-	-	1	SUJ2	No treatment

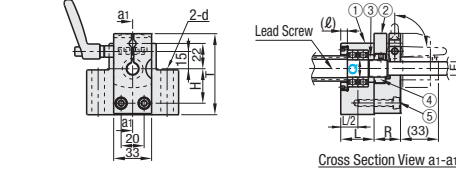
Lead Screw Support Unit Main Body MTWZ



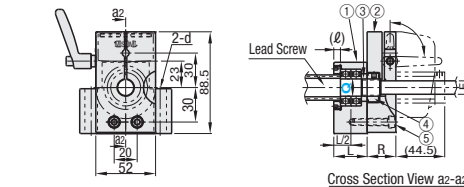
MTWZ-S



Stop Plate Set for Digital Position Indicators Compact Mount MTWZ-CP

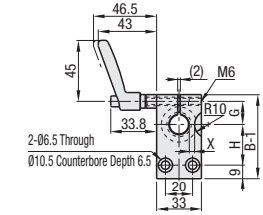


Stop Plate Set for Large Position Indicator Mount MTWZ-LP (Q12, 15)

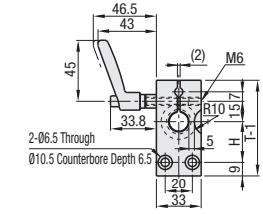


- ☑ Two preload-adjusted bearings are integrated in a Fixed Side Support Unit.
- ☑ As one of the specifications for Support Side Support Unit, any bearing is not integrated in the main body when the product is shipped.
- ☑ Values in () are applicable only when support units are purchased in set.
- ☑ Only Q8 product are surface-treated with Trivalent Chromate.

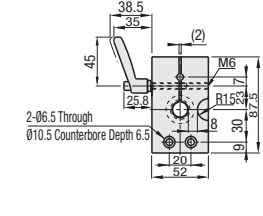
Drawing for MTWZ-S Stop Plate Set only



MTWZ-CP Drawing for Stop Plate Set only



MTWZ-LP Drawing for Stop Plate Set only



☑ Do not use without inserting the screw shaft (empty tightening). It may deform, causing it to be unusable.

☑ The clamp lever cannot be mounted on the opposite side.

☑ A collar for the clamp lever is not included with Q8. The clamp lever mounting dimensions will be the same as the Large Type.

Part Number Type	Support Unit Set Support Side Set	Q	A	B	C	F	h	J	H	G	T	L	R	(ℓ)	X	d	E	(ℓ1)	Bearing Nut	Clamp Lever	Bearing	Allowable Axial Load (N)
MTWZ	-SET	8	52	48	25	38	30	35	20	13	60.5	22	22		4.5	6.6	6	24	BNR8	CLDM6-32-M	B608ZZ	1300
MTWZ-S	(Only When Purchasing Support Units In Set)	10	70	53	36	52	35	34	25	13	65.5	24	23	4.8	4.5	9	8	27	BNR10	CLDM6-40-M	B600ZZ	2300
MTWZ-CP		12	70	58	36	52	40	39	30	13	24	23		4.5		10	27	BNR12		B6001ZZ	2600	
MTWZ-LP		15	80	62	41	60	40	39	30	17	70.5	27	25	5.8	5.5	11	12	31	BNR15		B6002ZZ	2900



Part Number	Q	(-SET)
MTWZ	15	
MTWZ	12	-SET
MTWZ-S	12	
MTWZ-CP	15	-SET

- ☑ Fixed side only
- ☑ Fixed side + support side (MTUZ or MTUZM; *Same material as fixed side)
- ☑ Fixed side only
- ☑ Fixed side + support side (MTUZ or MTUZM; *Same material as fixed side)

☑ Support Side Support Unit Sets are available at 5 percent reduced price compared to Without Support Side Support Units.

Part Number Type	Support Unit Set Support Side Set	Q	MTWZ	MTWZ-SET	MTWZ-S	MTWZ-S-SET	MTWZ-CP	MTWZ-CP-SET	MTWZ-LP	MTWZ-LP-SET
			Unit Price	Unit Price	Unit Price	Unit Price	Unit Price	Unit Price	Unit Price	Unit Price
MTWZ	-SET	8								
MTWZ-S	(Only When Purchasing Support Units In Set)	10								
MTWZ-CP		12								
MTWZ-LP		15								