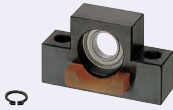


Support Units - Support Side, Square <Convenient>

Type with Damper / Type with Retaining Ring

Support Side with Damper



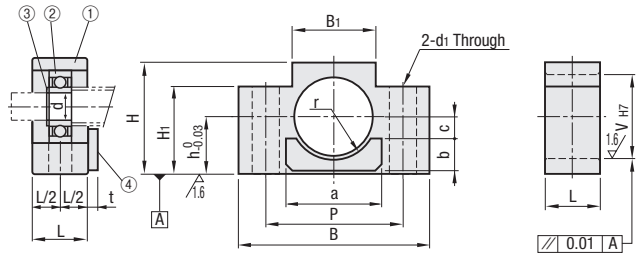
ReliS10

Component Details

Number	Part Name	Quantity
①	Housing	1
②	Japanese made radial bearing	1
③	Retaining Ring	1
④	Urethane Damper (Shore A70)	1

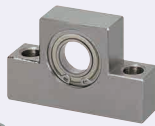
④ is adhesive bonded to the housing.

Type	Material	Surface Treatment
BUND	S45C	Black Oxide



Part Number Type	No.	d	L	B	H	h	B ₁	H ₁	P	V	d ₁	Damper Dimension					Bearing Type	Retaining Ring	Unit Price 1 ~ 10 pc (s).							
												a	b	c	r	t										
BUND	1022	8	20	70	40	22	36	21	52	22	9	10	34	10	6	12	10	B608ZZ	STWN8							
	10				43	25		24																		
	1223				41	23		22																		
	12	10	20	70	43	25	36	24	52	26	9	10	46	12	7	15.5	10	B6000ZZ	STWN10							
	1526				46	26		21																		
	1528				48	28		23					60	32	11	50		15	10	18						
	15	15	20	80	50	*30	41	25	60	32	11	20	60	19	10	25	10	B6002ZZ	STWN15							
	20				58	30		75					47	60	19	10		25								
	25				68	35		66					25	85	52	80		19	15	28						

Support Side Retaining Ring



ReliS10

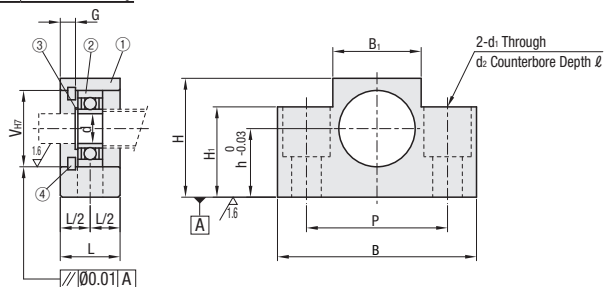
Component Details

Number	Part Name	Quantity
①	Housing	1
②	Japanese made radial bearing	1
③	Retaining Ring (STWN, S)	1
④	Retaining Ring (RTWN, S)	1

① BUNR bearing is Stainless Steel Type filled with low dust generation grease.
*BUNR/BUNM retaining rings ③ and ④ are Stainless Steel Type.

Type with Retaining Ring	Material	Surface Treatment
BTN	S45C	Black Oxide
BTNM		Electroless Nickel Plating

① No. 10 ~ 25 are not counterbored.



Part Number Type	No.	d	L	B	H	h	B ₁	H ₁	P	V	d ₁	d ₂	ℓ	Retaining Ring			Bearing Type	Retaining Ring	BTN	BTNM
														G	Retaining Ring	Retaining Ring			Unit Price 1 ~ 10 pc (s).	Unit Price 1 ~ 10 pc (s).
BTN BTNM	6	6	12	42	25	13	18	20	30	17	5.5	9.5	11	3	RTWN, S17	B606ZZ	STWN, S6			
	8		15	52	32	17	25	26	38		6.6	11								
	10	8	20	70	43	25	36	24	52	22	9	-	-	3	RTWN, S22	B608ZZ	STWN, S8			
	12														RTWN, S26	B6000ZZ	STWN, S10			
	15														RTWN, S32	B6002ZZ	STWN, S15			
	20	20	26	95	58	*30	56	30	75	47	11	-	-	4.5	RTWN, S47	B6204ZZ	STWN, S20			
	25														RTWN, S52	B6205ZZ	STWN, S25			

* Take care in combining No.20 with Ball Screw BSSZ(K)2510, BSR(K)2510 or BSST2510. The ball screw nut may come in contact with the bottom surfaces.



Ordering Example

Part Number
BUND15
BTN15

For details of Bearings in addition to mounting interface accuracies of Support Units, Included Collar and Bearing Nut, see P.759

Low Temperature Black Chrome Plating products are filled with low dust generation grease for cleanrooms.

Store Accessories with care since they are required when assembling.