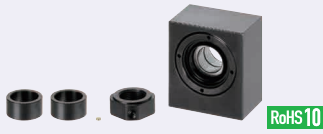


# Support Units - Fixed Side, Square <for Limited Space>

Compact Type / Low Profile Type / Mounting Hole Narrow Pitch Type

As compact in height and width compared to the conventional Support Units, it is suitable for use in limited space and for small devices.

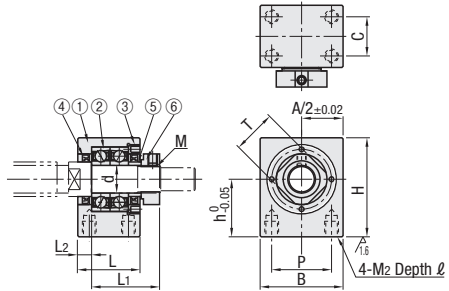
## Fixed Side Compact



RoHS 10

Type	Material	Surface Treatment
①③	⑤⑥	①③⑤⑥
<b>BSQ</b>	S45C	SS400
<b>BSQM</b>		
		Black Oxide
		Electroless Nickel Plating

Most compact in size.



## Component Details

Number	Part Name	Quantity
①	Bearing Housing	1
②	Japanese made angular contact bearing Grade ④	1 Set
③	Cover	1
④	Oil Seal	2
⑤	Collar	2
⑥	Bearing Nut (With Set Piece)	1

Do not disassemble the fixed side main body ①, ②, ③ and ④, as they must remain assembled.

d=8 comes with one Oil Seal ④

\* Angular Contact Bearing Class 5 is used for No.8.

\* For No.10S, the I.D. of oil seal is smaller than the previous No.10S version.

When used together with a MISUMI ball screw, there is one support unit accessory collar spare.

Part Number	Type	No.	d	L	L <sub>1</sub>	L <sub>2</sub>	B	H	h	P	M <sub>2</sub>	ℓ	C	M (Fine)	T	Oil Seal Applicable Shaft Dia.	BSQ	BSQM
																	Unit Price	Unit Price
		8	8	23	26	4	32	32	17	23	5	6	14	M8x1.0	14	11.5	1 - 10 pc (s).	1 - 10 pc (s).
		10S	10	27	29.5	6	36	43	25	26	6	10	17	M10x1.0	17	12		
		10	10	27	29.5	6	36	43	25	26	6	10	17	M10x1.0	17	14		
		12	12	27	29.5	6	36	43	25	26	6	10	17	M12x1.0	19	15		
		15	15	29	38	5	46	52	30	34	6	12	19	M15x1.0	22	20		

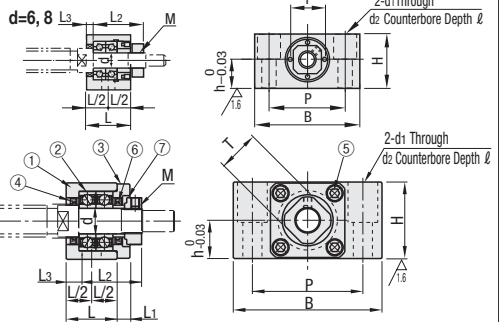
## Fixed Side Low Profile



RoHS 10

Type	Material	Surface Treatment
①③	⑥⑦	①③⑥⑦
<b>BSV</b>	S45C	SS400
<b>BSVM</b>		
		Black Oxide
		Electroless Nickel Plating

The lowest profile type.



## Component Details

Number	Part Name	Quantity
①	Bearing Housing	1
②	Japanese standard angular contact bearing Grade ④	1 Set
③	Cover	1
④	Oil Seal	2
⑤	Hex Socket Head Cap Screw*	4
⑥	Collar	2
⑦	Bearing Nut (With Set Piece)	1

Oil Seal ④ is not included in d=6.

d=8 comes with one Oil Seal ④

Do not disassemble the fixed side main body ①, ②, ③, ④ and ⑤, as they must remain assembled.

\* ⑤ Screws of BSVM are of Stainless Steel Type.

For No.8S and 10S, the I.D. of oil seal is smaller than the previous No.8S and No.10S versions.

When used together with a MISUMI ball screw, there is one support unit accessory collar spare.

Part Number	Type	No.	d	L	L <sub>1</sub>	L <sub>2</sub>	L <sub>3</sub>	B	H	h	P	d <sub>1</sub>	d <sub>2</sub>	ℓ	M (Fine)	T	Oil Seal Applicable Shaft Dia.	BSV	BSVM
																		Unit Price	Unit Price
		6	6	20	-	22.5	3.5	42	22	11	30	5.5	9.5	12	M6x0.75	12	-	1 - 10 pc (s).	1 - 10 pc (s).
		8S	8	23	-	26	4	52	28	14	38	6.6	11	15	M8x1.0	14	10		
		10S	10	24	6	29.5	6	70	36	18	52	9	14	19	M10x1.0	17	14		
		10	10	24	6	29.5	6	70	36	18	52	9	14	19	M12x1.0	19	15		
		12	12	24	6	29.5	6	70	36	18	52	9	14	19	M12x1.0	19	15		
		15	15	25	6	38	5	80	41	21	60	11	17	21	M15x1.0	22	20		
		20	20	42	10	52	10	95	56	28	75	11	17	29	M20x1.0	30	25		

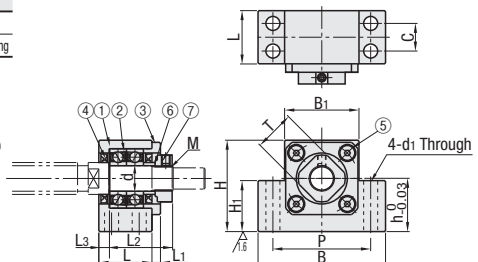
## Fixed Side Mounting Hole Narrow Pitch



RoHS 10

Type	Material	Surface Treatment
①③	⑥⑦	①③⑥⑦
<b>BSA</b>	S45C	SS400
<b>BSAM</b>		
		Black Oxide
		Electroless Nickel Plating

Compact width design.



## Component Details

Number	Part Name	Quantity
①	Bearing Housing	1
②	Japanese standard angular contact bearing Grade ④	1 Set
③	Cover	1
④	Oil Seal	2
⑤	Hex Socket Head Cap Screw*	4
⑥	Collar	2
⑦	Bearing Nut (With Set Piece)	1

Do not disassemble the fixed side main body ①, ②, ③, ④ and ⑤, as they must remain assembled.

\* ⑤ Screws of BSAM are of Stainless Steel Type.

For No.10S, the I.D. of oil seal is smaller than the previous version.

The screw head ⑤ protrudes 2mm from the cover.

When used together with a MISUMI ball screw, there is one support unit accessory collar spare.

Part Number	Type	No.	d	L	L <sub>1</sub>	L <sub>2</sub>	L <sub>3</sub>	B	H	h	B <sub>1</sub>	H <sub>1</sub>	P	C	d <sub>1</sub>	M (Fine)	T	Oil Seal Applicable Shaft Dia.	BSA	BSAM
																			Unit Price	Unit Price
		10S	10	25	4	29.5	5	60	39	22	34	21	46	13	6.6	M10x1.0	17	12	1 - 10 pc (s).	1 - 10 pc (s).
		10	10	25	4	29.5	5	60	43	25	35	24	46	13	6.6	M12x1.0	19	14		
		12	12	25	4	29.5	5	60	43	25	35	24	46	13	6.6	M12x1.0	19	15		
		15	15	27	6	38	6	70	48	28	40	27	54	15	6.6	M15x1.0	22	20		



Ordering Example  
Part Number  
BSQM8  
BSV10S  
BSA12

For details of Bearings in addition to mounting interface accuracies of Support Units, Included Collar and Bearing Nut, see P.759

Ball Screw Compatibility Chart P.756

Store Accessories with care since they are required when assembling.