

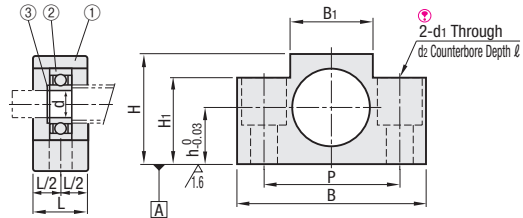
Support Units - Support Side, Square <Standard>

Standard



| Type Standard | Material | Surface Treatment |
|---------------|----------|--------------------------------------|
| BUN | S45C | Black Oxide |
| BUNM | | Electroless Nickel Plating |
| BUNR | | Low Temperature Black Chrome Plating |

⚠ No.1022 ~ 25 are not counterbored.



Component Details

| Number | Part Name | Quantity |
|--------|------------------------------|----------|
| ① | Housing | 1 |
| ② | Japanese made radial bearing | 1 |
| ③ | Retaining Ring (STWN, S) | 1 |

⚠ BUNR bearing is Stainless Steel Type filled with low dust generation grease.

* Retaining rings ③ of BUNR and BUNM are Stainless Steel Type.

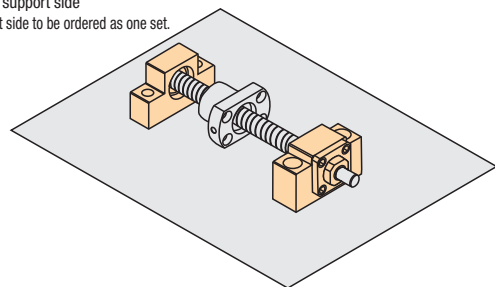
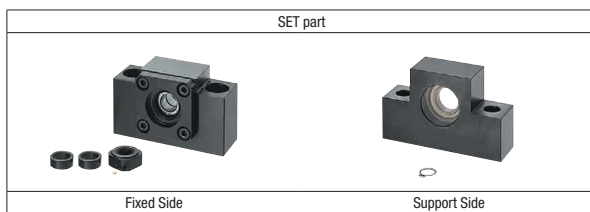
| Part Number | Type | No. | d | L | B | H | h | B1 | H1 | P | V | d1 | d2 | ℓ | Bearing Type | Retaining Ring | BUN | BUNM | BUNR |
|---------------------|------|-----|-----|----|-----|----|----|----|-----|----|-----|-----|---------|-----------|--------------|----------------|---------------|---------------|---------------|
| | | | | | | | | | | | | | | | | | Unit Price | Unit Price | Unit Price |
| | | | | | | | | | | | | | | | | | 1 ~ 10 pc(s). | 1 ~ 10 pc(s). | 1 ~ 10 pc(s). |
| BUN BUNM BUNR | 6 | 6 | 12 | 42 | 25 | 13 | 18 | 20 | 30 | 17 | 5.5 | 9.5 | 11 | B606ZZ | STWN, S6 | | | | |
| | 8 | 15 | 52 | 32 | 17 | 25 | 26 | 38 | 6.6 | | | | | | | 11 | | | |
| | 1022 | 8 | 70 | 40 | 22 | 36 | 21 | 52 | 22 | 9 | 22 | 9 | 11 | B608ZZ | STWN, S8 | | | | |
| | 10 | | | 43 | 25 | | | | | | | | | | | 24 | | | |
| | 1223 | | | 41 | 23 | | | | | | | | | | | 22 | | | |
| | 12 | 10 | 20 | 43 | 25 | 24 | 21 | 52 | 26 | 9 | 26 | 11 | 11 | B6000ZZ | STWN, S10 | | | | |
| | 1526 | | | 46 | 26 | | | | | | | | | | | 24 | | | |
| | 1528 | 15 | 80 | 48 | 28 | 41 | 23 | 60 | 32 | 11 | 32 | 11 | 11 | B6002ZZ | STWN, S15 | | | | |
| | 15 | | | 50 | 25 | | | | | | | | | | | | | | |
| | 20 | | | 58 | 25 | | | | | | | | | | | 25 | | | |
| 25 | 20 | 26 | 95 | 58 | *30 | 56 | 30 | 75 | 47 | 52 | 52 | 52 | B6204ZZ | STWN, S20 | | | | | |
| | 25 | 30 | 105 | 68 | 35 | 66 | 25 | 85 | 52 | 52 | 52 | 52 | B6205ZZ | STWN, S25 | | | | | |

⚠ Take care in combining No.20 with Ball Screw BSSZ(K)2510, BSSR(K)2510 or BSST2510. The ball screw nut may come in contact with the bottom surfaces.



SET part overview

For customers using in conjunction with fixed side and support side
We recommend a SET, which allows the fixed side and support side to be ordered as one set.
5% price reduction when ordering in SETs



<SET parts>

Black Oxide

| SET Part Number | SET parts | |
|-----------------|------------------------|--------------------------|
| | Fixed Side Part Number | Support Side Part Number |
| BSW6-SET | BSW6 | BUN6 |
| BSW8S-SET | BSW8S | BUN8 |
| BSW8-SET | BSW8 | BUN8 |
| BSW1022-SET | BSW1022 | BUN1022 |
| BSW10S-SET | BSW10S | BUN10 |
| BSW10-SET | BSW10 | BUN10 |
| BSW1223-SET | BSW1223 | BUN1223 |
| BSW12-SET | BSW12 | BUN12 |
| BSW1526-SET | BSW1526 | BUN1526 |
| BSW1528-SET | BSW1528 | BUN1528 |
| BSW15-SET | BSW15 | BUN15 |
| BSW20-SET | BSW20 | BUN20 |
| BSW25-SET | BSW25 | BUN25 |

Electroless Nickel Plating

| SET Part Number | SET parts | |
|-----------------|------------------------|--------------------------|
| | Fixed Side Part Number | Support Side Part Number |
| BSWN6-SET | BSWN6 | BUNM6 |
| BSWN8S-SET | BSWN8S | BUNM8 |
| BSWN8-SET | BSWN8 | BUNM8 |
| BSWN1022-SET | BSWN1022 | BUNM1022 |
| BSWN10S-SET | BSWN10S | BUNM10 |
| BSWN10-SET | BSWN10 | BUNM10 |
| BSWN1223-SET | BSWN1223 | BUNM1223 |
| BSWN12-SET | BSWN12 | BUNM12 |
| BSWN1526-SET | BSWN1526 | BUNM1526 |
| BSWN1528-SET | BSWN1528 | BUNM1528 |
| BSWN15-SET | BSWN15 | BUNM15 |
| BSWN20-SET | BSWN20 | BUNM20 |
| BSWN25-SET | BSWN25 | BUNM25 |

Low Temperature Black Chrome Plating

| SET Part Number | SET parts | |
|-----------------|------------------------|--------------------------|
| | Fixed Side Part Number | Support Side Part Number |
| BSWR6-SET | BSWR6 | BUNR6 |
| BSWR8S-SET | BSWR8S | BUNR8 |
| BSWR8-SET | BSWR8 | BUNR8 |
| BSWR1022-SET | BSWR1022 | BUNR1022 |
| BSWR10S-SET | BSWR10S | BUNR10 |
| BSWR10-SET | BSWR10 | BUNR10 |
| BSWR1223-SET | BSWR1223 | BUNR1223 |
| BSWR12-SET | BSWR12 | BUNR12 |
| BSWR1526-SET | BSWR1526 | BUNR1526 |
| BSWR1528-SET | BSWR1528 | BUNR1528 |
| BSWR15-SET | BSWR15 | BUNR15 |
| BSWR20-SET | BSWR20 | BUNR20 |
| BSWR25-SET | BSWR25 | BUNR25 |