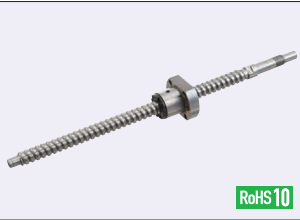


**Points of comparison
between similar products**

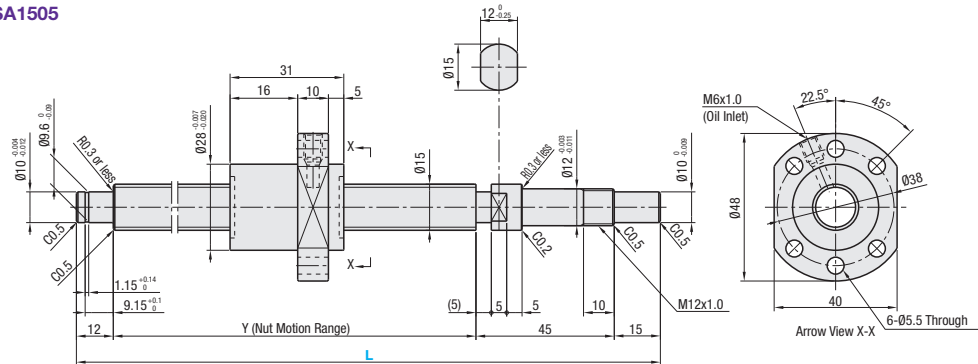
- Due to the difference in load rating and positioning accuracy (lead accuracy + axial play), the price is lower than that of similar products.
- When considering adopting C-VALUE parts, select them by comparing against similar products in the specifications. P. 741 - P. 742.



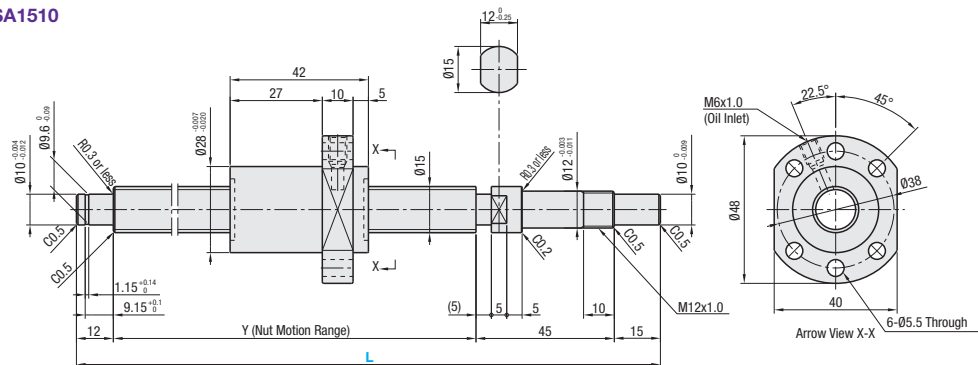
RoHS 10

Nut Type	Type	Accuracy Grade	Shaft Dia.	Lead	Screw Shaft		Nut	
					Material	Hardness	Material	Hardness
Standard Nut	C-BSSA	C5	15	5, 10, 20	S55C	Induction Hardened 58-62 HRC	SCM415	Carburized 58-62 HRC

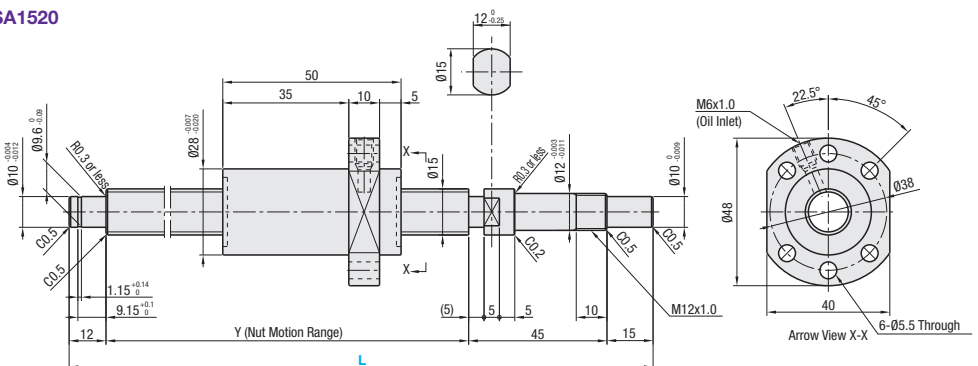
C-BSSA1505



C-BSSA1510



C-BSSA1520



Nut Type	Accuracy Grade	Part Number		1 mm Increments		Y	Ball Dia.	Ball Center Dia.	Screw Root Dia.	Number of Circuits	Basic Load Rating		Axial Play	Preload Torque N-cm	Twisting Direction
		Type	Screw Shaft O.D.	Lead	L						C (Dynamic) kN	Co (Static) kN			
Standard Nut	C5	C-BSSA	15	05	150~1095	L - 72	2.778	15.672	(12.984)	3.8 turns, 1 row	4.8	8.8	0.015 or less	2.0 or less	Right
				10	200~1095					2.8 turns, 1 row	3.9	6.9		3.0 or less	
				20	230~1095					1.8 turns, 1 row	3.1	5.5			

kgf = N x 0.101972