



MISUMI
C-VALUE

Precision Ball Screws Standard Nut - Shaft Dia. 15; Lead 5, 10, 20 (C-BSSH) Accuracy Grade C5

Points of comparison between similar products

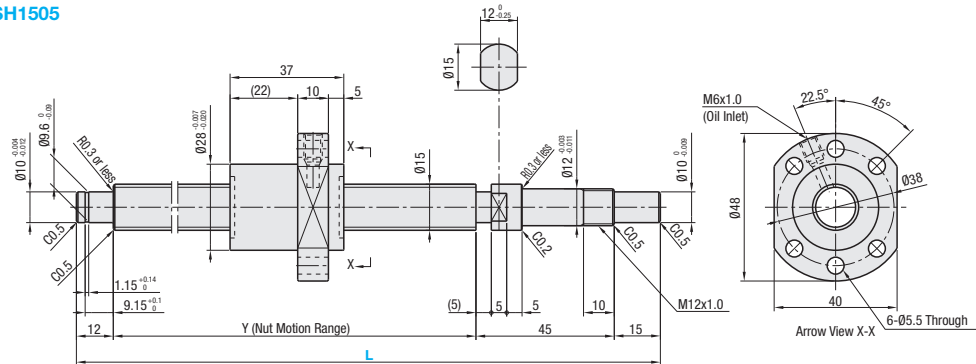
Load rating, axial clearance and nut dimensions of C-VALUE products are different from those of similar products. (For details, see P. 715 to P. 716.)
When opting for C-VALUE products, select them by comparing specifications of similar products.



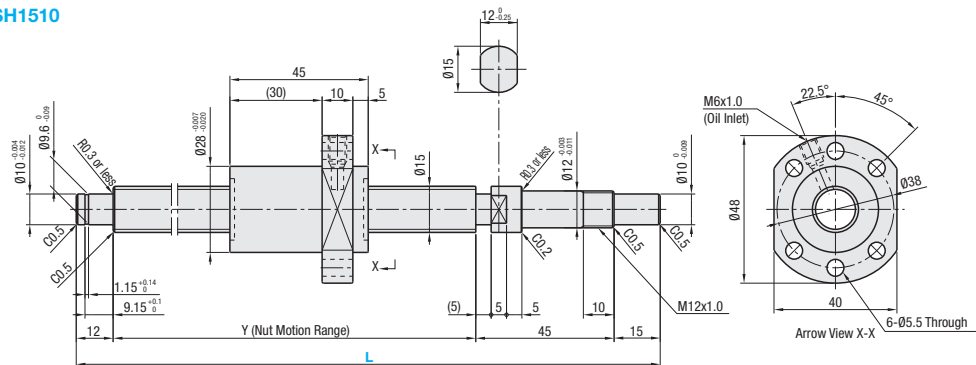
RoHS 10

Nut Type	Type	Accuracy Grade	Shaft Dia.	Lead	Screw Shaft		Nut	
					Material	Hardness	Material	Hardness
Standard Nut	C-BSSH	C5	15	5, 10, 20	S55C	Induction Hardened 58-62 HRC	SCM415	Carburized 58-62 HRC

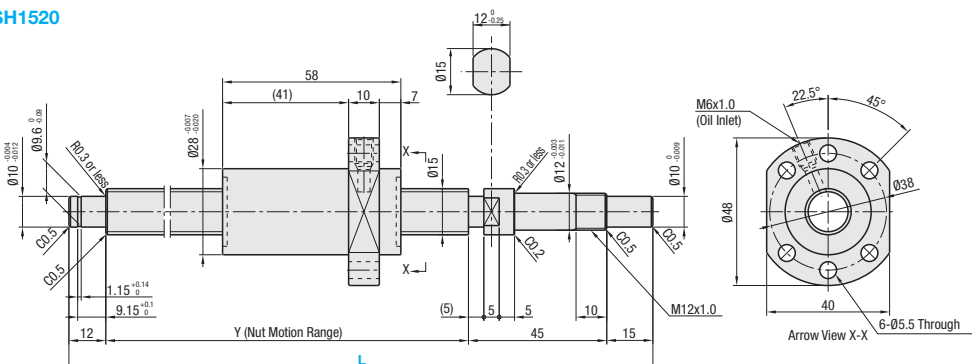
C-BSSH1505



C-BSSH1510



C-BSSH1520



Nut Type	Accuracy Grade	Part Number		1 mm Increments		Y	Ball Dia.	Ball Center Dia.	Screw Root Dia.	Number of Circuits	Basic Load Rating		Axial Play	Preload Torque N-cm	Twisting Direction	
		Type	Screw Shaft O.D.	Lead	L						C (Dynamic) kN	Co (Static) kN				
Standard Nut	C5	C-BSSH	15	05	150~1095	L - 72	2.778	15.672	(12.984)	3.8 turns, 1 row	4.8	8.8	0.015 or less	2.0 or less	Right	
				10	200~1095					2.8 turns, 1 row	3.9	6.9				3.0 or less
				20	230~1095					1.8 turns, 1 row	3.1	5.5				

kgf = N x 0.101972