



Miniature Linear Guides

Short Blocks, Light Preload / Slight Clearance

Features: Short Block Type of industry-standard spec. **20% more compact** than standard blocks.

Industry Standard

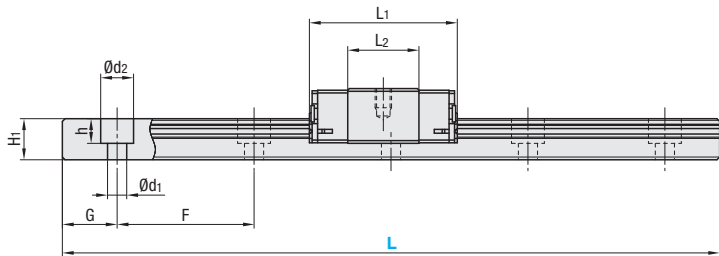
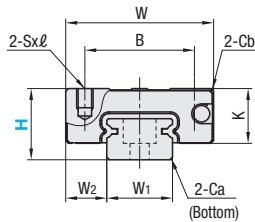


RoHS10

- This Type has the same fitting dimensions as the other company products, and thus, can be substituted for them.
- Blocks and rails are not sold as separate items. This Type has guaranteed radial clearances and accuracies as sets of blocks and rails.

Material Hardness	Type		MX (Lubrication Unit)	L Dimension	Number of Blocks
	Light Preload	Slight Clearance			
Stainless Steel 56HRC~	High Grade	Standard Grade	Blank: None -MX: Provided	Selectable	1
	SSEBS	SSEBSZ			2
	SSE2BS	SSE2BSZ		1	
	SSEBSL	SSEBSLZ			
SSE2BSL	SSE2BSLZ	2			

Heat Resistant Temperature: -20 ~ 80°C



For L Configurable, G dimensions differ from those shown in the table below. For details, see **P531**

Precautions for Use

- Blocks are equipped with retainers (wire) to prevent balls from falling off. For how to handle the blocks, see **P525**.
- Radial clearances and accuracies are not guaranteed if the blocks and rails are interchanged from the original set combinations.
- Straight grooves are provided on datum planes.
- Be sure to match the datum lines when using.
- Rails cannot be connected end to end.
- The accuracy of Linear Guides is guaranteed after mounting the rail (after fastening screws on the rail and pushing it onto the datum plane).
- Minor bending of the rail will be adjusted after being mounted and will not affect the performance.

Accessory

- H8 comes with cap screws (M2x6).

Others

- Filled with Lithium soap based grease (Multemp Grease PS2 by Kyodo Yushi Co., Ltd.).
- For operating life calculation, see **P527**.
- For operating life calculations, use our free calculation software from http://download.misumi.jp/mol/fa_soft.html.
- The MX type is greased with a lithium complex grease (TOUGHLIX GREASE MP2, made by JXTG Nippon Oil & Energy Corporation).

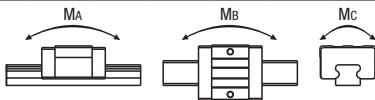
Part Number		MX	H	L	Block Dimension						Guide Rail Dimension							
Type					W	L1	B	Sxℓ	L2	K	Cb	W1	W2	H1	Ca	Counterbored Hole d1xd2xh	F	G
SSEBS SSE2BS SSEBSL SSE2BSL	SSEBSZ SSE2BSZ SSEBSLZ SSE2BSLZ	Blank: None -MX: Provided	8	40~130 (55)	17	19.6	12	M2x2.5	9.6	6.5	0.3	7	5	4.7	0.3	2.4x4.2x2.3	15	5
			10	35~275 (75)	20	22.9	15	M3x3	11.9	7.8	0.3	9	5.5	5.5	0.3	3.5x6x3.5	20	7.5
			13	45~470 (95)	27	27	20	M3x3.5	13	10	0.5	12	7.5	7.5	0.5	3.5x6x4.5	25	10
			16	70~670 (110)	32	32.7	25	M3x4	17.7	12	0.5	15	8.5	9.5	0.5	3.5x6x4.5	40	15

Dimensions in () are for 2-Block Type.

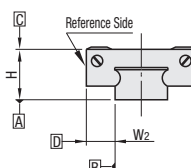
kgf~Nx0.101972

Unit: µm

H	Basic Load Rating			Allowable Static Moment			Mass	
	C (Dynamic) kN	Co (Static) kN	MA N·m	Mb N·m	Mc N·m	Block kg	Guide Rail kg/m	
8	0.79	1.27	1.9	1.6	4.6	0.008	0.19	
10	1.16	1.68	3.1	2.6	7.9	0.015	0.31	
13	1.63	2.38	5.2	4.4	14.8	0.025	0.61	
16	3.08	4.23	12.3	10.3	32.6	0.05	1.02	



Preload and Accuracy Standards



Specifications	Light Preload, High Grade	Slight Clearance, Standard Grade
Radial Clearance	-3~0	0~+15
Height H Tolerance	±20	±20
Pair Variation of Height H	15	40
Width W2 Tolerance	±25	±25
Pair Variation of Width W2	20	40
Running Parallelism of Plane C against Plane A	See P525	
Running Parallelism of Plane D against Plane A	See P525	

Slight Clearance Type has clearance (Gap) between rails and blocks. If precision / rigidity is required, select Light Preload Type.



Example

Short Block

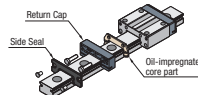


Standard Block



Space Savings by approx. 20%!

Lubrication Unit MX



The same block size as existing products!

The oil-impregnated porous core part has been built into the product.

- Advantages of the Lubrication Unit MX:
 - Provides long-term maintenance-free operation.
 - Reduces maintenance costs.