

Housing Units with Clamp Lever

Tall Blocks - Single/Double, Right/Left Clamp Lever

= For customers selecting MISUMI original specifications =

 The part enclosed in the red frame is right lever part of standard specifications. Consider these specifications while selecting the product.

Features: MISUMI original. The Clamp Lever Type can position workloads easier compared to the Standard.

MISUMI Original

Right Lever, Single



Left Lever, Single



Right Lever, Double

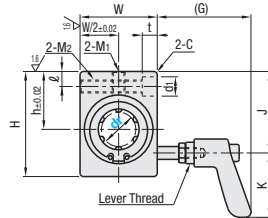


Left Lever, Double

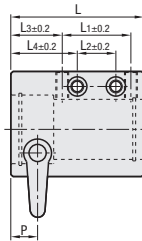


Type				Linear Bushing Used	Housing		Collar / Thread	Clamp Lever	Lever		Lever Thread	Nut	Ambient Operating Temp.
Right Lever		Left Lever		(≒ P.315)	Material	Surface Treatment	Material	(≒ P.2-114)	Material	Surface Treatment	Material	Material	
Single	Double	Single	Double		Aluminum Alloy	Clear Anodize	SUS304	CLFSC	Zinc Diecast	Baked Paint	SUS303	Stainless Steel (SUS)	-20~80°C
LHSSC	LHSSWC	LHSLC	LHSLWC	LMU									

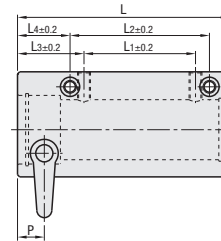
Right Lever



Single

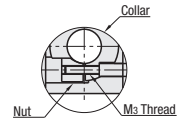


Double

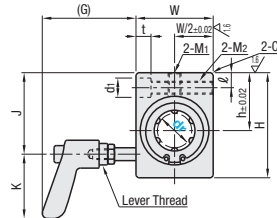


$$6.3 / \left(\frac{1.6}{\sqrt{\quad}} \right)$$

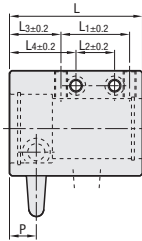
(Housing)



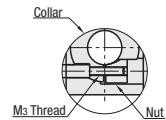
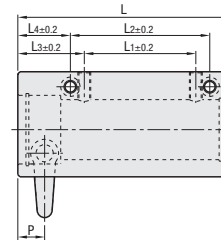
Left Lever



Single



Double



The linear shaft is clamped by the internal nut as the lever is rotated.

Part Number	Type	dr	Tolerance		Single	Double	Single	Double	Single	Double	Single	Double	h	W	H	G	J	K	P	ℓ	M1 Effective Length)	M2 Effective Length)	M3	d1x1	C		
			Single	Double																							
LHSSC LHSLC	16	0	-0.009	0	62	99	32	52	18	65	24	31	31	24.5	27	36	49	43.7	38	30	12.5	7	M6 (13)	M6 (29)	M4	9x7 (For M5 Screws) 11x8 (For M6 Screws)	1
25	0	-0.010	86	145	42	80	100	30.5	41	40.5	31	37	52	65	45.7	53.5	30	13.5	9	M10 (17)	M10 (42)	M5	14x10 (For M8 Screws)				
																								30	0	-0.012	91

For Precautions for Use, see P.303.

Make certain that the screws do not interfere with the bushing as M1 are through holes. The datum surface is located on the other side of product ID label.

dr	Max. Thrust Load N		Basic Load Rating				Mass (g)		Unit Price	
	Greased	Tightening Torque N·m	C (Dynamic) N		Co (Static) N		Single	Double	LHSSC	LHSSWC
			Single	Double	Single	Double				
16	250	1.5	775	1230	1180	2350	347	526		
20	250	1.5	882	1400	1370	2740	438	686		
25	250	3	980	1560	1570	3140	841	1387		
30	500	3	1570	2490	2740	5490	1015	1689		

$$\text{kgf} = \text{Nx}0.101972$$

Precautions for Use

- For installation, loosen a lever until the nut does not interfere with the shaft, then insert the shaft.
- Do not tighten the clamp without a shaft inserted. It may cause deformation and permanent damages.
- Use as an interim measure. Do not use as a permanent safety position holding device.

Max. Thrust Load Test Method

- The collar is tightened to torque value(s) shown in the chart, then compressive load is applied with the tester. The compressive load where the shaft begins to move is defined as the Max. Thrust Load.
- * Max. thrust load of greased linear bushings was tested.



Ordering Example

Part Number

- LHSSC16 (L Type Greased)
- LHSLC16G (G Type Greased)
- LHSSC20H (H Type Greased)

Alternative grease types available.

For Days to Ship, Price and Performance, see P.304.



Example

