

Housing Units

Wide Blocks - Single / Medium

= For customers using industry standard products =

The part enclosed in the red frame is as per industry standard specifications (Outer cylinder SUJ2 equivalent, Retainer resin). Consider these specifications while selecting the product.

Features: A design that reduces linear bushing assembly steps. Four mounting holes enable solid mounting with the load.

Industry Standard

Single

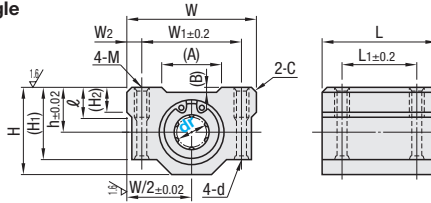


Medium



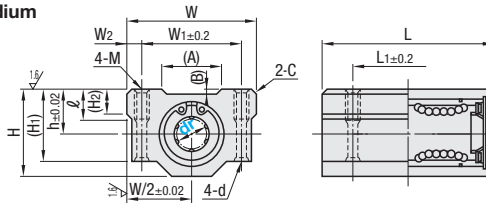
Type		Linear Bushing Used		Housing		Ambient
Single	Medium	(P315) Single	(P317) Medium	Material	Surface Treatment	Operating Temp.
LHBB	LHBBD	LMU	LMUD	Aluminum Alloy	Clear Anodize	-20~ 80°C
LHBBF	-	LMUF	-			

Single



$$\frac{6.3}{\sqrt{\frac{1.6}{\sqrt{\quad}}}} \quad (\text{Housing})$$

Medium



Features of Medium Type Bushings

Body length is approximately 1.4 times of single type and allowable moment is approximately 4.3 times: suitable where there is no enough space for double type.

dr	Tolerance		L		L1		h	H	(H1)	(H2)	W	W1	W2	M	d	ℓ	(A)	(B)	C									
	Single	Medium	Single	Medium	Single	Medium																						
(5)	-0.008	-	18	12	12	-	7	14	11	-	22	16	3	M3	-	-	-	-	0.5 or less									
6	0	0	25	35	15	24	9	18	15	6	30	20	5	M4	3.4	8	12	0.4	1 or less									
8			30	43	18	28	11	22	18		34	24					16											
10			35	53	21	34	13	26	21		40	28					15.5											
12			36	26	38	15	28	24	8		42	30.5					5.75											
13	-0.009	-0.010	39	54	26	38	15	38.5	32.5	9	50	36	7	M5	4.3	12	19	0.85	1.5 or less									
16			44	63													34			48	19	50	36	19.8				
20			50	73													40			56	21	41	35	11	54	40	21	0.5
25			67	93													50			66	26	51.5	42	12	76	54	11	36
30	-0.010	-0.012	72	100	58	70	30	59.5	49	15	78	58	10	M8	7	18	39.9	0.75	2 or less									
(35)			80	-	60	-	34	68	54	18	90	70					53											
(40)			90	-	60	-	40	78	62	20	102	80					61			1.5								
(50)	-0.012	-	110	-	80	-	52	102	80	25	122	100	11	M10	8.7	25	81	1.5										

For Precautions for Use, see P303. dr5 appearance will be different from the drawings above. dr () are available for Single Type only. The datum surface is located on the other side of product ID label.

Part Number	Type	dr	Unit Price			
			LHBB	LHBBF	LHBBD	
(Single) LHBB LHBBF		5			-	
		6				
		8				
		10				
		12				
		13				
		16				
	(Medium) LHBBD		20			
			25			
			30			
		35	-	-		
		40	-	-		
	50	-	-			

dr	Basic Load Rating				Allowable Static Moment (N·m)		Mass (g)	
	C (Dynamic) N		Co (Static) N		Single	Medium	Single	Medium
	Single	Medium	Single	Medium				
5	167	-	206	-	-	-	14	-
6	206	226	265	310	-	1.42	34	48
8	265	310	380	452	-	2.12	52	78
10	372	508	549	718	-	4.37	92	142
12	412	634	598	814	-	6.2	102	144
13	510	640	784	826	-	6.2	120	172
16	775	1164	1180	1448	-	13.1	220	323
20	882	1554	1370	2068	-	18.3	255	382
25	980	1725	1570	3068	-	25.3	600	866
30	1570	2440	2740	3974	-	42.7	735	1061
35	1670	-	3140	-	-	-	1100	-
40	2160	-	4020	-	-	-	1590	-
50	3820	-	7940	-	-	-	3340	-

kgf=Nx0.101972

Ordering Example

Part Number

LHBB12
LHBBD16
● LHBB12L (L Type Greased)
● LHBBD16G (G Type Greased)
● LHBBD20H (H Type Greased)

Alternative grease types available.
For Days to Ship, Price and Performance, see P304