

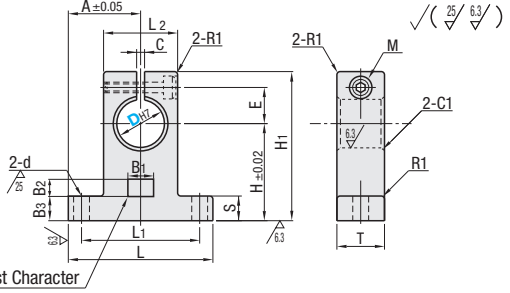
Shaft Supports - T-Shaped Slit (Cast)

Standard / Wide

■ **Features:** Most economical and popular shaft support. Wide Type has longer shaft holding section than Standard Type and has enhanced gripping power.



Type	Material	Surface Treatment	Accessory
SHAT	S45C	Black Oxide	Hex Socket Head Cap Screw 1 pc.
SHAM	Equivalent	Electroless Nickel Plating	
SHASS	SUS304 Equivalent	-	Hex Socket Head Cap Screw 1 pc. (SUS)
SHA	AC7A	Clear Anodize	
SHAKD		Black Anodize	



⚠ Slit is machined after the mounting hole D is bored to H7 tolerance. The tolerance may become H8 or so depending on the machining condition.
⚠ There may be no cast characters.

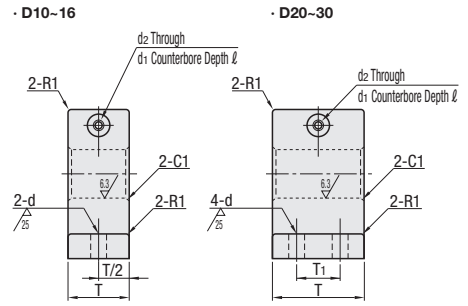
Cast Character

Part Number Type	No.	D	H	L	H1	T	L1	d	L2	A	S	E	C	B1	B2	B3	Tightening Screw M	Mass g	Unit Price					
																			SHAT	SHAM	SHASS	SHA	SHAKD	
	3	3																69(24)	-	-	-	-	-	
	4	4																	69(24)	-	-	-	-	-
	5	5	20			32.8													69(24)	-	-	-	-	-
	6	6							18			7.8	2						69(24)	-	-	-	-	-
	*815	8	15		28														58(20)	-	-	-	-	-
	*8	8	42		32.8	14	32			21	6								69(24)	-	-	-	-	-
	*10	10	20					5.5											69(24)	-	-	-	-	-
	*1220	12	23		35							9.5							69(24)	-	-	-	-	-
	*12	12	20		37.5				20										87(30)	-	-	-	-	-
	*1320	13	20		35														69(24)	-	-	-	-	-
	*13	13	23		37.5														87(30)	-	-	-	-	-
	*15	15	27		44														116(40)	-	-	-	-	-
	*1625	16	25	48	42	16	38		25	24	8	12							121(42)	-	-	-	-	-
	*16	16	27		44														116(40)	-	-	-	-	-
	*18	18	31		51														202(70)	-	-	-	-	-
	*2025	20	25	60	45	20	45		30	30	10	14	2.5						191(66)	-	-	-	-	-
	*2030	20	30		50			6.6											214(74)	-	-	-	-	-
	*20	20	31		51														202(70)	-	-	-	-	-
	*2530	25	30	70	55	24	56		38	35		17							381(132)	-	-	-	-	-
	*25	25	35		60														376(130)	-	-	-	-	-
	*3030	30	30	84	58	28	64	9	44	42		21							474(164)	-	-	-	-	-
	*30	30	42		70														520(180)	-	-	-	-	-
	*35	35	50	98	82	32	74	11	50	49	15	24							780(270)	-	-	-	-	-
	*40	40	60	114	96	36	90		60	57		27							1213(420)	-	-	-	-	-
	*50	50	70	126	120	40	100	14	74	63	18	38							2167(750)	-	-	-	-	-

⚠ Values in () are the mass for aluminum products. ⚠ SHAT, SHAM and SHASS are only available in sizes denoted with * mark.



Type	Material	Surface Treatment	Accessory
SHATN	S45C	Black Oxide	Hex Socket Head Cap Screw 1 pc.
SHAMN	Equivalent	Electroless Nickel Plating	
SHASSN	SUS304 Equivalent	-	Hex Socket Head Cap Screw 1 pc. (SUS)
SHAN	AC7A	Clear Anodize	



⚠ Slit is machined after the mounting hole D is bored to H7 tolerance. The tolerance may become H8 or so depending on the machining condition.

Part Number Type	D	H	L	H1	T	T1	L1	d	L2	S	E	C	Tightening Screw M	d1	d2	ℓ	Mass g	Unit Price			
																		SHATN	SHAMN	SHASSN	SHAN
	10	20	44	40	20		32		18	8	13		5	9	5.5	5.5	129(44)				
	12	20	44	40	20		32		18	8	13		5	9	5.5	5.5	124(43)				
	16	25	52	48	25		40		25		15	2	6	11	6.6	6.5	244(84)				
	20	30	62	59	30	18	46	6.6	30	10	19		8	14	9	9	408(140)				
	25	30	66	61	35	20	50		35		22		8	14	9	9	526(181)				
	30	30	85	63	40	20	65		44	12	24	3	8	14	9	9	790(272)				

⚠ Values in () are the mass for aluminum products.

Ordering Example

Part Number

SHASSN30
SHAT1220
SHATN20
SHASSN16