

SUS-HG-S TYPE

• Equipped with a pedal type single stopper



Swivel



Plate type



Equipped with a single stopper



Double Bearing

Double bearing



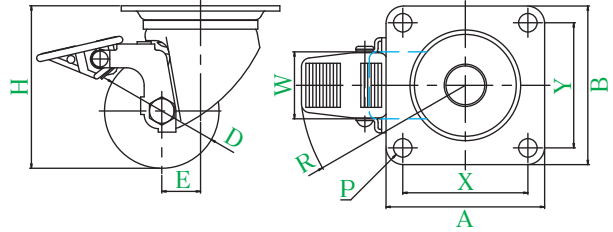
Stainless steel



SUS-HG-75PBS



SUS-HG-50GNBS



● Description of product number

SUS - HG - 75 PB S

Bracket type
Wheel diameter
Wheel type
Equipped with stopper

Bracket = Stainless steel

Product number	Wheels										
		Wheel diameter D(mm)	Wheel width (mm)	Mounting height H(mm)	Mounting base A × B(mm)	Mounting dimensions X × Y(mm)	Hole diameter P(mm)	Eccentricity E(mm)	Turning radius (mm)	Allowance load daN(kgf)	Wheel weight (g)
SUS-HG-50	GNB	50	28	68	64 × 64	50 × 50	6.5	25	65	120(122.4)	330
	MC S		25							120(122.4)	
	MCE									120(122.4)	
SUS-HG-65	PB	65	38	92	90 × 90	71 × 71	10.5	22	94	230(234.6)	900
	GNB S									230(234.6)	
	MC									230(234.6)	
	MCEB									230(234.6)	
SUS-HG-75	PB	75	38	106	90 × 90	71 × 71	10.5	22	96	250(255.0)	995
	GNB S									250(255.0)	
	MC									250(255.0)	
	MCEB									250(255.0)	

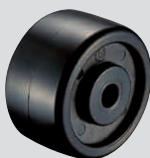
● These casters are used for only locking rotation of the wheel.

Wheel in use

Refer to P164 for detailed specifications.



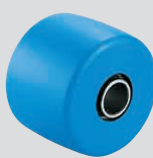
PB
Phenol wheel (including B)



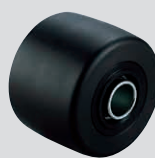
GNB
Reinforced nylon wheel



GNB
Reinforced nylon wheel (including B)



MC
MC nylon wheel (including B)



MCE MCEB
MC nylon wheel (including B) (conductive)