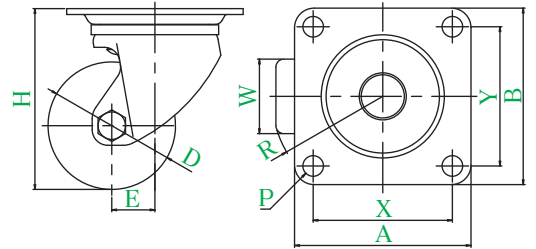
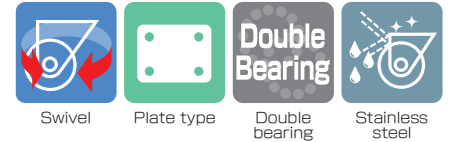


# SUS-HGTYPE



SUS-HG-65PB

### ● Description of product number

**SUS - HG - 65 PB**

Bracket type      Wheel diameter      Wheel type

Bracket = Stainless steel

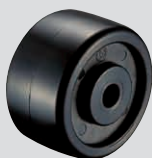
Product number	Wheels										
		Wheel diameter D(mm)	Wheel width (mm)	Mounting height H(mm)	Mounting base A × B(mm)	Mounting dimensions X × Y(mm)	Hole diameter P(mm)	Eccentricity E(mm)	Turning radius (mm)	Allowance load daN(kgf)	Wheel weight (g)
SUS-HG-50	GNB Reinforced nylon wheel	50	28	68	64 × 64	50 × 50	6.5	25	51	120(122.4)	290
	MC MC nylon wheel		25								
	MCE MC nylon wheel (conductive)										
SUS-HG-65	PB Phenol wheel (including B)	65	38	92	90 × 90	71 × 71	10.5	22	57	230(234.6)	815
	GNB Reinforced nylon wheel (including B)									230(234.6)	
	MC MC nylon wheel (including B)									230(234.6)	
	MCEB MC nylon wheel (including B) (conductive)									230(234.6)	
SUS-HG-75	PB Phenol wheel (including B)	75	38	106	90 × 90	71 × 71	10.5	22	61	250(255.0)	910
	GNB Reinforced nylon wheel (including B)									250(255.0)	
	MC MC nylon wheel (including B)									250(255.0)	
	MCEB MC nylon wheel (including B) (conductive)									250(255.0)	

### Wheel in use

Refer to P164 for detailed specifications.



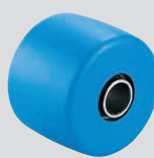
**PB**  
Phenol wheel (including B)



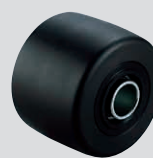
**GNB**  
Reinforced nylon wheel



**GNB**  
Reinforced nylon wheel (including B)



**MC**  
MC nylon wheel (including B)



**MCE | MCEB**  
MC nylon wheel (including B) (conductive)

- J
- PM
- J2
- RJ2
- SJ
- S
- E
- G
- L
- SA
- H
- CAL -H
- M
- PL
- Silence
- SUS -J2
- SUS -SJ
- SUS -S
- SUS -E
- SUS -H**
- P
- SKY
- Equipped with adjuster foot
- Special
- Easy lock
- Wheels