

SUS-SGTYPE



There are some non-conforming products.



Swivel



Plate type



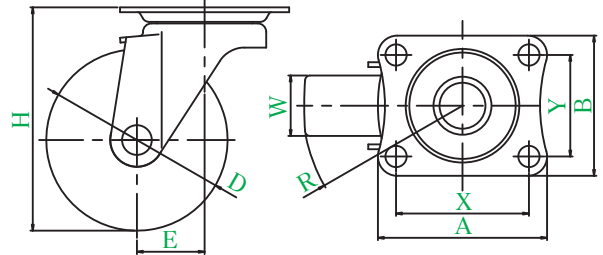
Double bearing



Stainless steel



SUS-SG-75N



● Description of product number

SUS - SG - 75 N

Bracket type
Wheel diameter
Wheel type

Bracket = Stainless steel

Product number	Wheels										
		Wheel diameter D(mm)	Wheel width W(mm)	Mounting height H(mm)	Mounting base A × B(mm)	Mounting dimensions X × Y(mm)	Hole diameter P(mm)	Eccentricity E(mm)	Turning radius R(mm)	Allowance load daN(kgf)	Wheel weight (g)
SUS-SG-50	RH Rubber wheel	50	28	70	70 × 58	55 × 42	8.8	27	53	50(51.0)	275
	N Nylon wheel		25							60(61.2)	240
	UR Urethane wheel with nylon wheel assembly		60(61.2)							245	
SUS-SG-65	RH Rubber wheel	65	25	85	70 × 58	55 × 42	8.8	27	61	50(51.0)	375
	N Nylon wheel									70(71.4)	260
	UR Urethane wheel with nylon wheel assembly		60(61.2)							285	
	EL Elastomer wheel		40(40.8)								
SUS-SG-75	RH Rubber wheel	75	25	93	70 × 58	55 × 42	8.8	28	66	60(61.2)	360
	NR Rubber wheel with nylon wheel assembly		27							60(61.2)	290
	N Nylon wheel		25							80(81.6)	275
	UR Urethane wheel with nylon wheel assembly		26							70(71.4)	300
	EL Elastomer wheel		27							50(51.0)	300

● Conductive rubber wheel having wheel diameter of φ 75 can be manufactured.

Wheel in use

Refer to P163 for detailed specifications.



RH Rubber wheel



NR Rubber wheel with nylon wheel assembly



N Nylon wheel



UR Urethane wheel with nylon wheel assembly



EL Elastomer wheel

- J
- PM
- J2
- RJ2
- SJ
- S
- E
- G
- L
- SA
- H
- CAL
- H
- M
- PL
- Silence
- SUS
- J2
- SUS
- SJ
- SUS**
- S
- SUS
- E
- SUS
- H
- P
- SKY
- Equipped with adjuster foot
- Special
- Easy lock
- Wheels