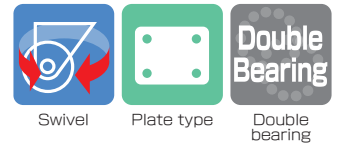
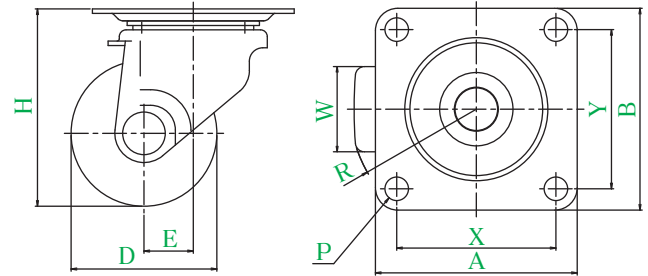


# CAL-HGTYPE



CAL-HG-65PB



● Description of product number

**CAL-HG - 65 PB**

Bracket type    Wheel diameter    Wheel type

Bracket = Trivalent unichrome coating

Product number	Wheels										
		Wheel diameter D(mm)	Wheel width W(mm)	Mounting height H(mm)	Mounting base A × B(mm)	Mounting dimensions X × Y(mm)	Hole diameter P(mm)	Eccentricity E(mm)	Turning radius R(mm)	Allowance load daN(kgf)	Wheel weight (g)
CAL-HG-65	PB Phenol wheel (including B)	65	38	88	90 × 90	71 × 71	10.5	22	57	300(306.0)	695
	GNB Reinforced nylon wheel (including B)									300(306.0)	655
	MC MC nylon wheel (including B)									300(306.0)	675
	MCE MC nylon wheel (including B) (conductive)									300(306.0)	680
CAL-HG-75	PB Phenol wheel (including B)	75	38	98	90 × 90	71 × 71	10.5	22	61	300(306.0)	760
	GNB Reinforced nylon wheel (including B)									300(306.0)	700
	MC MC nylon wheel (including B)									300(306.0)	730
	MCE MC nylon wheel (including B) (conductive)									300(306.0)	735

**Wheel in use**

Refer to P160 for detailed specifications.



**PB** Phenol wheel (including B)    **GNB** Reinforced nylon wheel (including B)    **MC** MC nylon wheel (including B)    **MCE** MC nylon wheel (including B) (conductive)

- J
- PM
- J2
- RJ2
- SJ
- S
- E
- G
- L
- SA
- H
- CAL-H**
- M
- PL
- Silence
- SUS-J2
- SUS-SJ
- SUS-S
- SUS-E
- SUS-H
- P
- SKY
- Equipped with adjuster foot
- Special
- Easy lock
- Wheels