

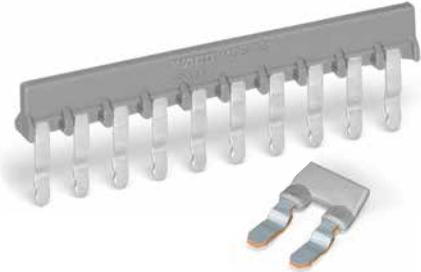
# Accessories

## Comb-Style Jumper Bars

### MCS MIDI

**Comb-style jumper bars**  
**Pin spacing: 5/5.08 mm / 0.197/0.2 in.**  
 for male and female connectors  
 equipped with CAGE CLAMP®  
 320 V/4 kV/2 12/16 A

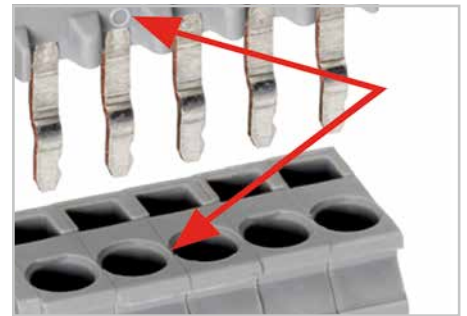
#### Handling



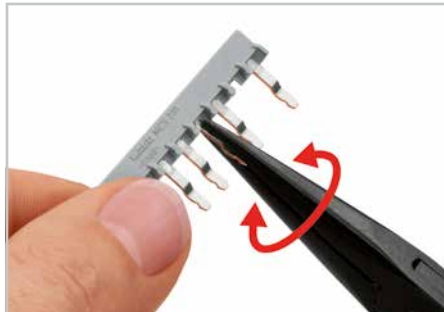
Jumper Type	Item No.	Pack. Unit
<b>Comb-style jumper bar</b> , insulated, for straight/angled male and female connectors equipped with CAGE CLAMP®		
Nominal current		
2-way	12 A	<b>231-902</b> 200 (8 x 25)
3-way	16 A	<b>231-903</b> 100 (4 x 25)
5-way	16 A	<b>231-905</b> 100 (4 x 25)
7-way	16 A	<b>231-907</b> 100 (4 x 25)
10-way	16 A	<b>231-910</b> 100 (4 x 25)
<p><b>Notice:</b>                      Not suitable for female connectors equipped with Push-in CAGE CLAMP® and angled female connectors for panel mounting!</p> <p>Comb-style jumper bar reduces maximum conductor size to 1.5 mm<sup>2</sup>.</p>		



**Notice:** Insert jumper bar according to direction symbols. □ symbol shows direction to operating slot.



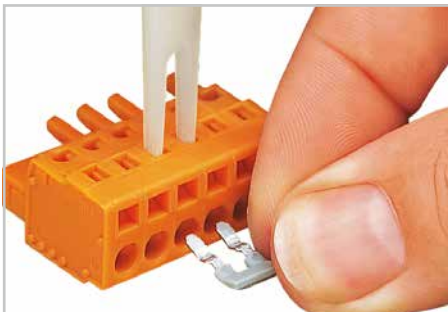
**Notice:** Insert jumper bar according to direction symbols. ○ symbol shows direction to conductor entry.



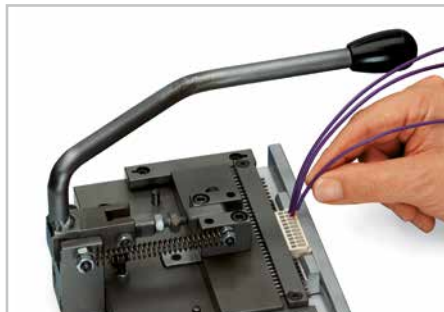
Individual comb-style jumper bars are created by breaking out jumper contacts (starting with 3-way).



Insert comb-style jumper bars via multipole operating tool, with the female or male connector being supported in a suitable holding device.



Commoning a female connector with 231-902 comb-style jumper bar via 2-pole operating tool.



Male or female connectors can be pre-assembled with comb-style jumper bars upon request.



**Notice:** Comb-style jumper bars reduce conductor size to 1.5 mm<sup>2</sup> "s" + "fst".