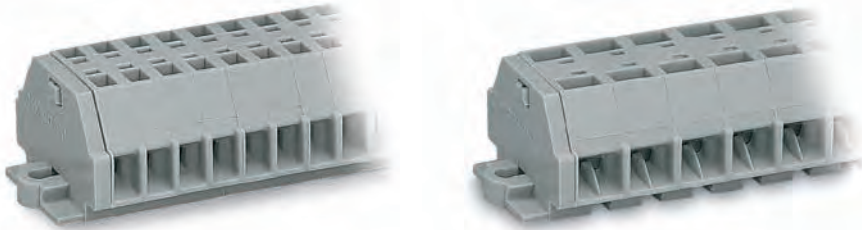


Terminal Strips with Fixing Flanges or Snap-in Mounting Feet 1.5 mm² 260 Series

0.08 ... 1.5 mm ² 400 V/6 kV/3 ① I _N 18 A	AWG 28 ... 16 300 V, 10 A ② 300 V, 15 A ③	0.08 ... 1.5 mm ² 400 V/6 kV/3 ① I _N 18 A	AWG 28 ... 16 300 V, 10 A ② 300 V, 15 A ③
Pole width 5 mm / 0.197 in. 8 ... 9 mm / 0.33 in. ②		Pole width 8 mm / 0.315 in. 8 ... 9 mm / 0.33 in. ②	

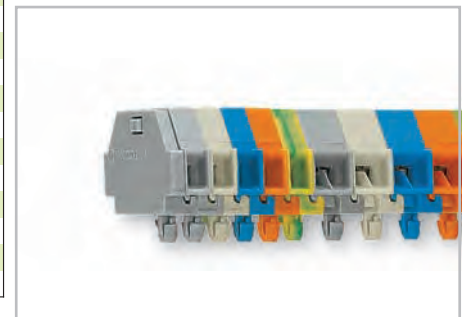


- ① 400 V = rated voltage
6 kV = rated surge voltage
3 = pollution degree
(also see Section 14)
- ② Strip length, see packaging or instructions.
- ③ For longer strips and/or assemblies of different colors, please contact factory

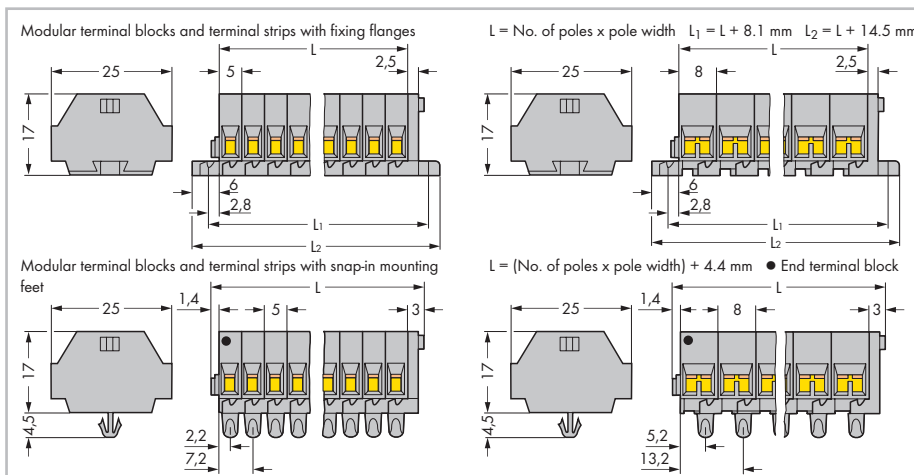
Pole No.	Item No.	Pack. Unit	Pole No.	Item No.	Pack. Unit
2-conductor terminal strip with fixing flanges, gray			4-conductor terminal strip with fixing flanges, gray		
2	260-102	100	2	260-202	100
3	260-103	100	3	260-203	100
4	260-104	100	4	260-204	100
5	260-105	100	5	260-205	100
6	260-106	50	6	260-206	50
7	260-107	50	7	260-207	50
8	260-108	50	8	260-208	50
9	260-109	50	9	260-209	50
10	260-110	25	10	260-210	25
11	260-111	25	11	260-211	25
12 ③	260-112	25	12 ③	260-212	25
2-conductor terminal strip with snap-in mounting feet, gray			4-conductor terminal strip with snap-in mounting feet, gray		
2	260-152	100	2	260-252	100
3	260-153	100	3	260-253	100
4	260-154	100	4	260-254	100
5	260-155	100	5	260-255	100
6	260-156	50	6	260-256	50
7	260-157	50	7	260-257	50
8	260-158	50	8	260-258	50
9	260-159	50	9	260-259	50
10	260-160	25	10	260-260	25
11	260-161	25	11	260-261	25
12 ③	260-162	25	12 ③	260-262	25



Terminal strip with fixing flanges, for screw or similar mounting types, fixing hole 3.2 mm Ø (with 209-123 mounting adapter also for DIN 35 rail)



Terminal strip with snap-in mounting feet, for plate thickness 0.6 mm ... 1.2 mm, fixing hole 3.5 mm Ø (fits 210-154 aluminum rail or with 209-120 mounting adapter for DIN 35 rail)



Dimensions in mm

Certification organizations can be found in the overview on page 622.