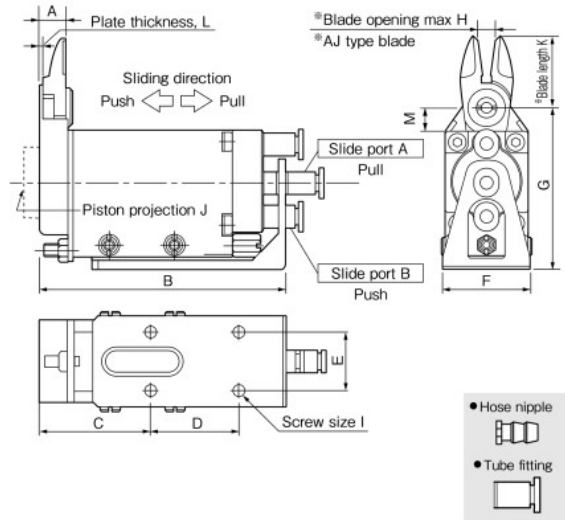
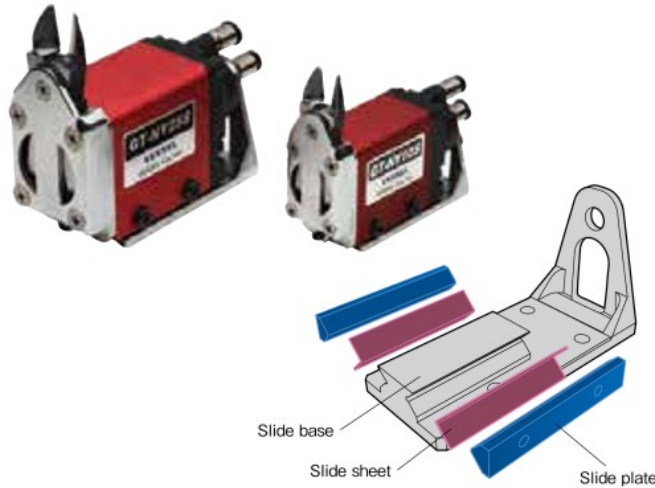


No. GT-NY10S/25S Double Action Sliding Air Nippers

- The springless slide construction of the main unit ensures smooth movement.
- V-groove slide base has been employed for high precision positioning.



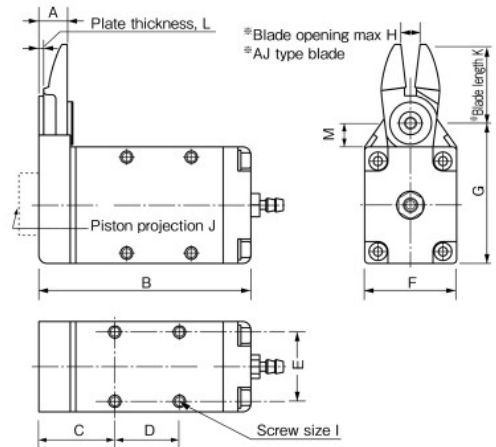
Reference

Capacity ϕ (mm) Soft Plastic Hard Plastic	Model No.	Size (mm)													Air Consumption (cm ³ /str.)	Weight (g)	Slide Distance (mm)	Hose Port	EDP No.
		A	B	C	D	E	F	G	H	I	J	K	L	M					
3.5 2.3	GT-NY10S	8.8	84.5	38	30	20	32	55	6	M4	5	24	1.6	7.5	68	300	0~3.5	W/tube fitting Hose I.D. $\phi 2.5 \times O.D. \phi 4mm$	360731
5.0 3.4	GT-NY25S	12.5	106.5	47	40	30	47	72	9	M5	2	31	2.5	10.5	184	695	0~5.0	W/tube fitting Hose I.D. $\phi 4 \times O.D. \phi 6mm$	360732

*Capacity indication shows the reference value when a standard blade is mounted. Values vary depending on the blade shapes and type of cut objects.
 *K (blade projection) and H (maximum blade opening) indicate the dimensions when a standard blade (AJ type) is mounted.
 *Air Pressure...NY10S: 0.4~0.5MPa / NY25S: 0.5~0.6MPa

No. GT-NF05/10/15 Type-F Air Nippers

- These compact, lightweight nippers have been designed for easy mounting inside equipment and to enable secure mounting under high-density mounting conditions.



Reference

Capacity ϕ (mm) Soft Plastic Hard Plastic Copper Steel	Model No.	Size (mm)													Air Consumption (cm ³ /str.)	Weight (g)	Hose Port	EDP No.
		A	B	C	D	E	F	G	H	I	J	K	L	M				
3.0 2.0 1.6 1.0	GT-NF05	8.6	59.9	21.9	17	18	23	39.5	4	M3	3	22	1.6	8.4	43	101	W/hose nipple	360606
3.5 2.3 1.7 1.1	GT-NF10	8.8	65.1	23.1	20	22	28	43.5	6	M3.5	5	24	1.6	7.4	63	143	Hose I.D.	360607
4.0 2.6 1.8 1.2	GT-NF15	10.2	73	25	25	26	33	48.5	8	M4	5	27	2	7.4	128	219	$\phi 2.5 \times \phi 4mm$	360608

*Capacity indication shows the reference value when a standard blade is mounted. Values vary depending on the blade shapes and type of cut objects.
 *K (blade projection) and H (maximum blade opening) indicate the dimensions when a standard blade (AJ type) is mounted. Mounting screw for NF10 (M3.5) is regarded as spare part.
 *Air Pressure...0.4~0.5MPa