

RTHN SERIES

High-Attenuation Three-Phase Filter with Many Current Variations (Thin Type)



FEATURES

- 6 to 300A wide range lineup.
- High attenuation, thin type with L2.
- Low-profile design.
- Self-tightening screws and an open/close type cover make wiring work easier.
- Terminal block cover included for safety.
- Compliant with RoHS directives.

SAFETY STANDARDS

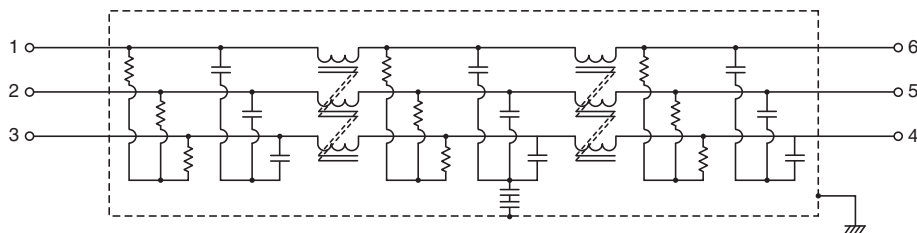
UL1283	File No. E62388 (Up to 150A)
EN60939	Licence Ref. No. SE/07115-4 (Up to 300A)

PRODUCT IDENTIFICATION

RTHN -5 ***

- Rated current
- Number indicating the rated voltage
- Series name

CIRCUIT DIAGRAMS



• Conformity to RoHS Directive: This means that, in conformity with EU Directive 2002/95/EC, lead, cadmium, mercury, hexavalent chromium, and specific bromine-based flame retardants, PBB and PBDE, have not been used, except for exempted applications.

• All specifications are subject to change without notice.