

## RTCN SERIES

Filter Exclusively for Secondary Side Three-Phase Inverter with Many Current Variations



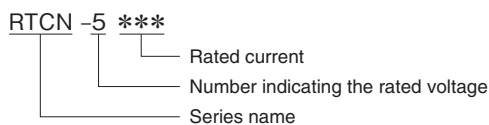
### FEATURES

- 6 to 300A wide range lineup.
- Small due to L1, light and thin.
- Low-profile design.
- Self-tightening screws and an open/close type cover make wiring work easier.
- Terminal block cover included for safety.
- Compliant with RoHS directives.

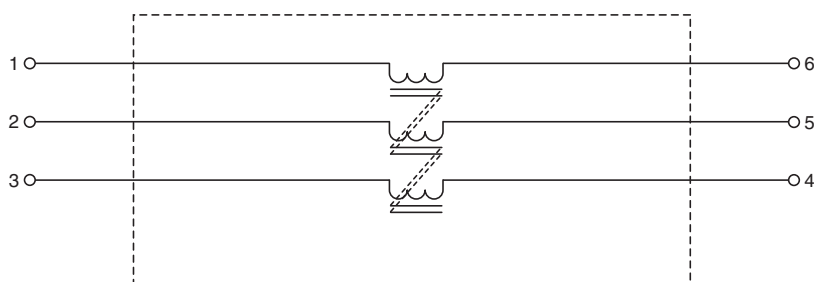
### SAFETY STANDARDS

UL1283	File No. E62388 (UP to 150A)
EN60939	Licence Ref. No. SE/07115-5 (Up to 60A) SE/07115-4 (80A to)

### PRODUCT IDENTIFICATION



### CIRCUIT DIAGRAM



• Conformity to RoHS Directive: This means that, in conformity with EU Directive 2002/95/EC, lead, cadmium, mercury, hexavalent chromium, and specific bromine-based flame retardants, PBB and PBDE, have not been used, except for exempted applications.

• All specifications are subject to change without notice.