

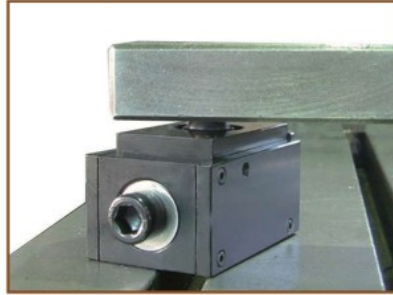


APB ADJUSTABLE PARALLEL BLOCK

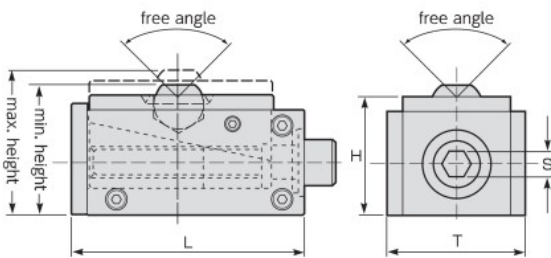
► Features

- This parallel block can smoothly move up and down vertically.
- The built-in bearing allows lateral adjustment with light force.
- The ball swivel angle can be freely set.
- The ball at the top part turns freely.

► Example of use



- Material : S45C
- Finish : Black finish



Item No.	Size (mm)					Allowable load (KN)	N.W. (kg)	
	H	T	L	S	Height			
					Max.			Min.
APB50	40	53	88.5	10	55	50	1.5	
APB65	54	70	124	12	72	100	3.7	



MS MULTIPLE STOPPER

► Features

- The guide bolt can be vertically adjusted within 50mm range.
- When the swing bolt of the guide part is loosened, it can swing by 180° and can be fixed at any required spot.
- The stopper can also be used by loosening the fixing bolt of the body and fixing the guide part in a 90° sideway position.

- Material : S50C
- Finish : Black finish

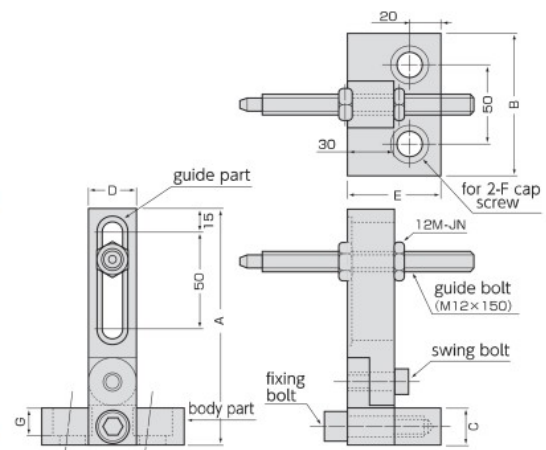
► Example of use



Conventional use

Sideway use

Swing use



Item No.	Size (mm)							N.W. (kg)
	A	B	C	D	E	F	G	
MS1512	150	90	23	30	60	M12	13	1.6
MS1516	150	90	23	30	60	M16	17	1.57