

## U (for Shock absorbing castors)

- Tire UR (Polyurethane)
- Wheel center U-100TS: Nylon
- Bearing -
- Operating temp. -15°C~+80°C
- Hardness U-75TS: (HS) 90-92  
U-100TS: (HS) 96
- Characteristics Shock and oil resistance.
- Applicable to Castors on P.34



U-75TS

	75	25	31	8	—	50 (490)
U-75TS						
U-100TS	100	25	30	8	—	60 (580)

NB with steel/stainless steel bushing.

## UW

ベアリング変更 JBB→CB

- Tire UR (Polyurethane)
- Wheel center Steel SPHC-P
- Bearing ~~JBB Radial ball bearing~~ → CB
- Operating temp. -30°C~+80°C
- Hardness (HS) 90-92
- Characteristics Shock and oil resistance.
- Applicable to Castors on P.7 P.13 P.25 P.51 P.53



UW-75	JBB	75	32	35	10	10.0	120 (1170)
UW-100	JBB	100	35	42	12	11.0	180 (1760)
UW-130	JBB	130	42	52	20	13.5	250 (2450)
UW-150	JBB	150	45	55	20	13.0	300 (2940)
UW-200	JBB	200	45	55	20	14.0	400 (3920)
UW-250	JBB	250	45	64	25	15.0	500 (4900)
UW-300	JBB	300	50	70	25	25.0	550 (5390)

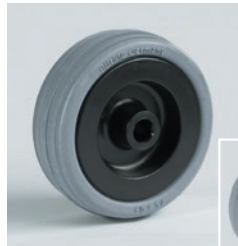
→CBに変更



## VPA G (for Shock absorbing castors)

- Tire SBR
- Wheel center Nylon
- Bearing -
- Operating temp. -20°C~+60°C
- Hardness (HS) 76-84
- Characteristics High elasticity. Floor saving.
- Applicable to Castors on P.34

<Made in Germany>



VPA-50G

VPA-50G	50	18	22	6	12.0	40 (390)
VPA-75G	75	25	29.5	6	15.5	60 (580)
VPA-100G	100	25	29.5	6	18.0	90 (880)

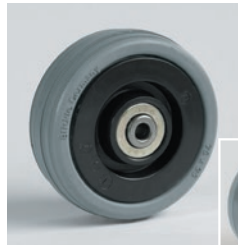
NB with steel/stainless steel bushing.



## VPA K (for Shock absorbing castors)

- Tire SBR
- Wheel center Nylon
- Bearing ~~JBB Radial ball bearing~~
- Operating temp. -20°C~+60°C
- Hardness (HS) 76-84
- Characteristics High elasticity. Low noise. Floor saving.
- Applicable to Castors on P.34

<Made in Germany>



VPA-50K

VPA-50K	JBB	50	18	22.5	6	12.0	40 (390)
VPA-75K	JBB	75	25	30	6	15.5	60 (580)
VPA-100K	JBB	100	25	30	6	18.0	90 (880)

## W

ベアリングJBB削除

- Tire SBR
- Wheel center Steel SPHC-P
- Bearing ~~CB Pressed bearing~~  
~~JBB Radial ball bearing~~ 削除
- Operating temp. -30°C~+90°C
- Hardness (HS) 70-75
- Characteristics High elasticity.
- Applicable to Castors on P.7 P.13 P.25 P.51 P.53 P.55



W-75	CB	JBB	75	32	35	10	10.5	80 (780)
W-100	CB	JBB	100	35	42	12	13.5	130 (1270)
W-130	CB	JBB	130	42	52	20	14.0	180 (1760)
W-150	CB	JBB	150	45	55	20	15.0	200 (1960)
W-180	CB	JBB	180	45	55	20	16.5	230 (2250)
W-200	CB	JBB	200	45	55	20	17.5	250 (2450)
W-250	CB	JBB	250	50	64	25	20.0	330 (3230)
W-300	CB	JBB	300	50	70	25	25.0	350 (3430)

## WUW

ベアリング変更 JBB→CB

- Tire UR (Antibacterial white polyurethane)
- Wheel center Steel SPHC-P
- Bearing ~~JBB Radial ball bearing~~ → CB
- Operating temp. -30°C~+80°C
- Hardness (HS) 75
- Characteristics Antibacterial effect. High elasticity. Oil resistance.
- Applicable to Castors on P.7 P.13 P.25 P.51 P.53 P.55



WUW-75	JBB	75	32	35	10	10.0	80 (780)
WUW-100	JBB	100	35	42	12	11.0	130 (1270)
WUW-130	JBB	130	42	52	20	13.5	180 (1760)
WUW-150	JBB	150	45	55	20	13.0	200 (1960)
WUW-200	JBB	200	45	55	20	14.0	250 (2450)
WUW-250	JBB	250	45	64	25	15.0	330 (3230)

→CBに変更