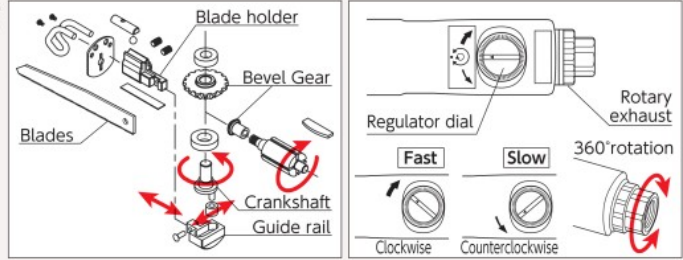


The high-powered, unstoppable reciprocating saw

The reduced vibration from the Air Motor and Gear driven system of the reciprocating air saw allow for a smoother, more comfortable cut. The blade is mounted on the end of the saw and the power is transmitted to the blade.

- 5300 cycle per minutes and 12 mm stroke for fast cutting.
- The blade is very stable and the cut is clean and distortion free.
- Two screws hold the blade.
- Built-in air regulator adjusts the cutting speed.
- 360 degree rotating rear exhaust.
- Safety lever to prevent accidental starting.

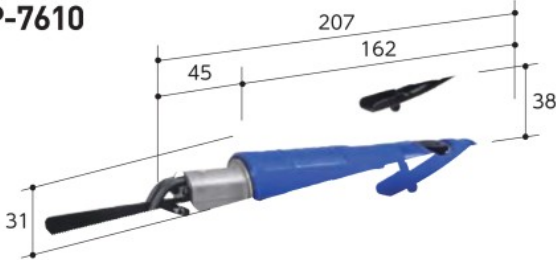


RECIPROCATING SAW

Cutting Capacity 4mm (Steel) [RECIPROCATING SAW]

- Lightweight. ● High power. ● Urethane covered cushion grip. ● Safety lever. ● Built-in power regulator. ● 360 degree rotating rear exhaust. ● Secure fixing blade with screw hole.

SP-7610



Cutting Capacity 2mm (Steel) [RECIPROCATING SAW]

- Lightweight. ● High power. ● Urethane covered cushion grip. ● Safety lever. ● Built-in power regulator. ● 360 degree rotating rear exhaust. ● Secure fixing blade with screw hole.

SP-7620



Cutting Capacity 1.5mm (Steel) [HIGH SPEED TYPE]

- Lightweight. ● High speed type. ● Safety lever. ● Secure fixing blade with screw hole.

SP-1720



Cutting Capacity 1.5mm (Steel) [LOW SPEED TYPE]

- Rubber cover grip. ● Safety lever. ● Dust hose included. ● Suitable for dia. 5 mm files.

SP-1730



Air Saw Blades



EDP	PART NUMBER	SPECIFICATION	JAN (4545695)
370324	SP-7610-200	24 teeth Bimetal (for HTTS)	000709
370315	AS-170	32 teeth Bimetal (for Steel)	600020
370316	AS-171	24 teeth Bimetal (for Aluminum)	600570

FILE

Rasp Φ5mm [MINI TYPE]

- Light weight. ● Low speed and high torque. ● Rubber covered grip. ● Safety lever

SP-1700F



EDP	Model No.	Grip Dia. (mm)	Stroke (mm)	Install Method	Free Speed (min ⁻¹)	Overall Length (mm)	Air Consumption (m ³ /min)	Hose Coupling	Net Weight (kg)	Accessories	JAN (4545695)
370134	SP-7610	40	12	Set screw H3mm	5300	207	0.5	1/4"NPT	0.6	Blade (7610-200), Allen key (H3mm)	002435
370170	SP-7620	38	6	Set screw H3mm	11000	154	0.5	1/4"NPT	0.6	Blade (7610-200), Allen key (H3mm)	003876
370135	SP-1720	43	7	Set screw H3mm	11000	200	0.32	1/4"NPT	0.48	Blade (32T), Allen key (H3mm, H2mm)	000806
370136	SP-1730	43	9	Set screw H3mm	5000	240	0.3	1/4"NPT	1.15	Blade (32T), Allen key (H3mm)	000813
370137	SP-1700F	28	5	Set screw H3mm	4500	180	0.3	1/4"NPT	0.42	Files (Round, Flat, triangular), Allen key (H3mm)	000820

Air pressure: 0.62 MPa Air hose inner dia.: 9.5 mm Rear exhaust Air connector included

FASTENING

DRILLING

SANDING

GRINDING

CUTTING

HAMMERING

BEVELER