

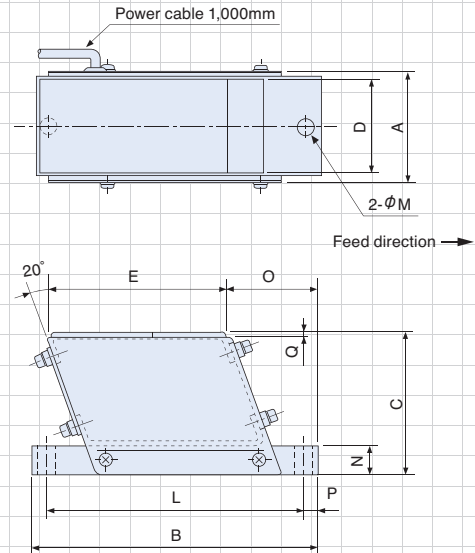
MF Series – Direct Mount Type

Compact yet powerful, for speedy delivery and versatile, longer distance conveyance

A new type of electromagnetic drive unit ideal for use with chutes handling very small, flat, and precision parts. Takes full advantage of merits of half wave operation for smooth conveyance of fragile and easily damaged workpieces.



MF-04C/15C Dimensions



Features

- Compact yet powerful**
 Small unit size with half wave operation capable of longer distance conveyance.
- Speedy delivery, and versatile, longer distance conveyance**
 High vibration frequency and amplitude give speedy delivery, and can meet a range of longer distance conveyance requirements.
- Easy, convenient installation**
 Compact design takes up little space and allows easy, convenient installation.

*Users are asked to drill holes as required for chute attachment.

Specifications

Model	Voltage (V)	Current (A)	Vibration (Hz)	Weight (kg)	Standard compatible controllers
MF-04C	100/110 200/220	0.13 0.065	50~90(*50/60)	0.6	C10-1VF/1VFEF C4-5B
MF-15C	100/110 200/220	0.2 0.1	50~90(*50/60)	1.8	

*When C4-5B was used.

Dimensions Chart

Model	A	B	C	D	E	L	M	N	O	P	Q
MF-04C	46	106	56	38	62	88	7	9	38	9	3.2
MF-15C	56	160	78	52	100	144	9	16	52	8	3.2

Unit: mm

Chute Specifications

Compatible linear feeder	Max. length	Max. width	Max. weight (kg)
MF-04C	300	35	0.4
MF-15C	450	45	1.5

Unit: mm

Note: Chute must straddle drive unit to distribute weight.