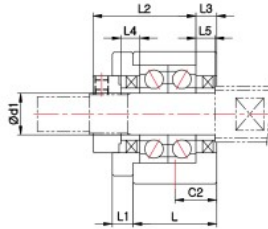
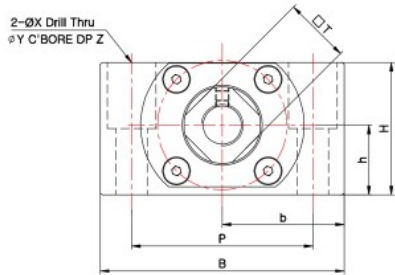


SUPPORT UNIT : CK/CF SERIES (Low-Centered Type)



SUPPORT UNIT FOR BALL SCREW (GENERAL LOAD)

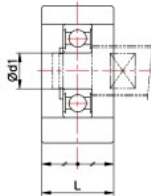
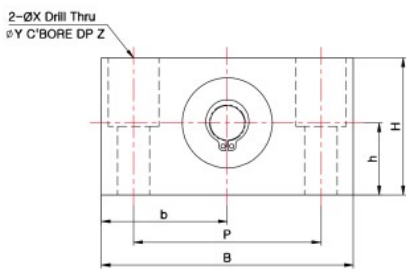
CK-8 ~ CK-15



Dimensions

Model	Sizes (mm)																Mass (g)	
	Body												Spacer(collar)					
	d1	L	L1	L2	L3	B	H	b±0.02	h±0.02	P	C2	X	Y	Z	□T	L4		L5
CK-8	8	21.5	4	26.5	3.5	62	31	31	15.5	46	11	9	14	18	14	6	6	260
CK-10	10	24	6	29.5	6	70	38	35	20	52	12	9	14	19	16	5.5	5.5	430
CK-12	12	24	6	29.5	6	70	38	35	20	52	12	9	14	19	19	5.5	5.5	430
CK-15	15	25	6	38	5	80	42	40	22	60	12.5	11	17	23	22	10	10	540

CF-8 ~ CF-15



Dimensions

Model	Sizes (mm)											Mass (g)	Snap-ring	Bearing
	Body													
	d1	L	B	H	b±0.02	h±0.02	P	X	Y	Z				
CF-8	6	16	62	31	31	15.5	46	9	14	18	165	C6	606ZZ	
CF-10	10	20	70	38	35	20	52	9	14	19	285	C10	6000ZZ	
CF-12	10	20	70	38	35	20	52	9	14	19	285	C10	6000ZZ	
CF-15	15	20	80	42	40	22	60	9	14	23	355	C15	6002ZZ	