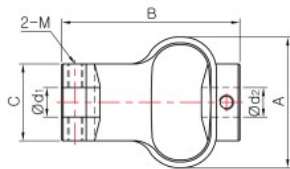


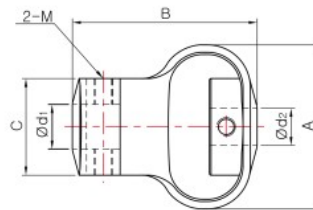
# SFC SERIES

## Urethane Flexible Coupling

### Set-screw



Size: 29, 38



Size: 48, 54

### Dimensions / Performance

Model	Size (±0.3mm)			Screw		Max. Torque (N·m)	Max. rpm (min <sup>-1</sup> )	Mass (g)	Permissible Misalignment		
	A	B	C	Size	Fastening Torque (N·m)				Angular (°)	Parallel (mm)	End-play (mm)
SFC-29	25	28	18	M4	1.7	0.35	3,000	19	10	2	1.5
SFC-38	32	35	22.5	M4	1.7	1.35	3,000	38	10	2.5	2
SFC-48	43	50	26	M5	4	1.8	3,000	60	12	2.5	2
SFC-54	50	59	29.5	M6	7	4.5	3,000	140	12	3	2

### Standard Inner Diameter (ID)

Model	Standard Inner Diameter (d <sub>1</sub> , d <sub>2</sub> ) (mm)									
	4	5	6	8	10	12	14	15	16	
SFC-29	●	●	●	●	●					
SFC-38			●	●	●	●				
SFC-48				●	●	●	●			
SFC-54					●	●	●	●	●	●

※ Keyway is **NOT** available for all sized SFC series.