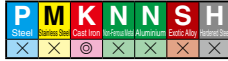


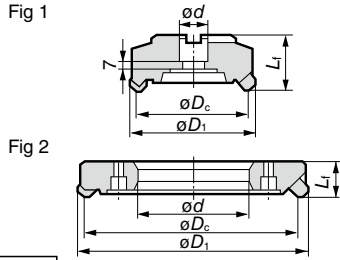
SEC-High-Feed Mill NRV4000/5000 Type

High Feed Roughing Of
Cast Iron

Recommended
Cutting Conditions
→ H142



Rake Angle	Radial	-6°
	Axial	-5°



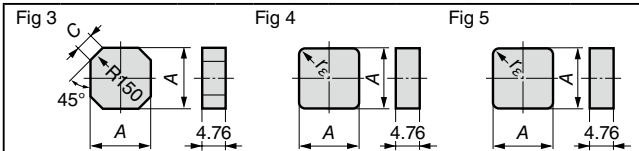
■ Milling Cutter Body Imperial

Inserts are not included.

Type	Cat. No.	Stock		Dimensions (mm)				No. of Teeth	Weight (kg)	Fig
		R	L	ϕD_c	ϕD_1^*	ϕd	L_1			
F Type	NRV ϕ 100QR/L	100		112(118)	31.75	60	10	2.7	1	
	ϕ 125QR/L	125		137(143)	38.1	60	14	3.8	1	
	ϕ 160QR/L	160		172(177)	50.8	60	18	6.3	1	
Two Piece Type	NRVZ ϕ 200R/L	200		212(218)	80	40	24	5.8	2	
	ϕ 250R/L	250		262(268)	120	40	30	9.0	2	
	ϕ 315R/L	315		326(332)	180	40	36	12.5	2	
	ϕ 355R/L	355		366(372)	220	40	42	15.5	2	
	ϕ 400R/L	400		411(417)	250	40	48	18.8	2	
	ϕ 450R/L	450		461(467)	300	40	54	22.0	2	

- 4 or 5 must be filed in "O".
- Refer to page H146 for special arbour for Fig. 1 type cutters.
- Refer to page H146 for special adaptor for Fig. 2 type cutters.
- *: Dimensions in parentheses are for 5000 Type.

■ Insert



Application	Grade	Coated Carbide		Carbide	Dimensions (mm)			Fig	Applicable Cutters
		ACK200	ACK300		A	C	r_ϵ		
High Speed/Light	High Speed/Light	K							
	General Purpose	K		K					
	Roughing		K						
Cat. No.	ACK200	ACK300	G10E						
	SNC 43MW		●	12.70	3.0	—	3	NRV4000	
	SNC 433			12.70	—	1.2	4	NRV4000	
	434			12.70	—	1.6	4	NRV4000	
	435			12.70	—	2.0	4	NRV4000	
	436			12.70	—	2.4	4	NRV4000	
	SNC 535			15.875	—	2.0	4	NRV5000	
	SNMN 432			●	12.70	—	0.8	5	NRV4000
	433		●	●	12.70	—	1.2	5	NRV4000
	434				12.70	—	1.6	5	NRV4000
435				12.70	—	2.0	5	NRV4000	
436				12.70	—	2.4	5	NRV4000	

■ Spare Parts

Clamp		Double Screw	Spanner	Applicable Cutters	The above cutters must be used with:
Below ϕ 160	Above ϕ 200				
NW41RR	NW42RR	WB6-20	TH030	NRV4000R	• Arbour for F Type • 2 Pc Type Adaptor
NW41RL	NW42RL			NRV4000L	
NW51R	NW52R	WV6-20	TH030	NRV5000R	
NW51L	NW52L			NRV5000L	

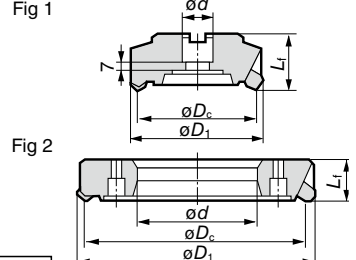
SEC-High-Feed Mill DPV4000/5000 Type

High Feed Medium
Finishing Of Cast Iron

Recommended
Cutting Conditions
→ H142



Rake Angle	Radial	+5°
	Axial	+10°



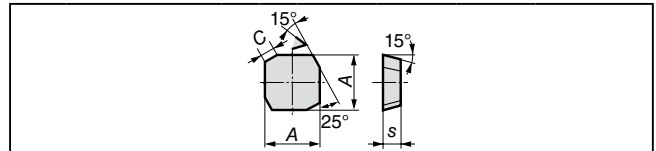
■ Milling Cutter Body Imperial

Inserts are not included.

Type	Cat. No.	Stock		Dimensions (mm)				No. of Teeth	Weight (kg)	Fig
		R	L	ϕD_c	ϕD_1^*	ϕd	L_1			
F Type	DPV ϕ 100QR/L	100		107.2(109.6)	31.75	60	12	10	2.6	1
	ϕ 125QR/L	125		131.5(133.6)	38.1	60	16	14	3.6	1
	ϕ 160QR/L	160		165.8(176.6)	50.8	60	20	18	6.0	1
Two Piece Type	DPVZ ϕ 200R/L	200		206.5(208)	80	40	26	24	5.5	2
	ϕ 250R/L	250		256 (258)	120	40	32	30	9.0	2
	ϕ 315R/L	315		322.5(323)	180	40	38	36	12.0	2
	ϕ 355R/L	355		361.5(363)	220	40	44	42	15.0	2
	ϕ 400R/L	400		406.5(408)	250	40	50	48	17.8	2
	ϕ 450R/L	450		456.5(458)	300	40	56	54	20.8	2

- 4 or 5 must be filed in "O".
- Refer to page H146 for special arbour for Fig. 1 type cutters.
- Refer to page H146 for special adaptor for Fig. 2 type cutters.
- *: Dimensions in parentheses are for 5000 Type.

■ Insert



Application	Grade	Coated Carbide		Carbide	Dimensions (mm)			Applicable Cutters
		ACK200	ACK300		A	s	C	
High Speed/Light	High Speed/Light	K		K				
	General Purpose	K						
	Roughing		K					
Cat. No.	ACK200	ACK300	H10E					
	SDCN 42R		●	12.70	3.18	3.5	DPV4000R	
	42L		●	12.70	3.18	3.5	DPV4000L	
	SDCN 53R		●	15.875	5.0	5.0	DPV5000R	
	53L			15.875	5.0	5.0	DPV5000L	

■ Spare Parts

Clamp		Double Screw	Spanner	Applicable Cutters	The above cutters must be used with:
Below ϕ 160	Above ϕ 200				
HTW40R	HTW41R	WB6-20	TH030	DPV4000R	• Arbour for F Type • 2 Pc Type Adaptor
HTW40L	HTW41L			DPV4000L	
HTW50R	HTW51R	WB6-20	TH030	DPV5000R	
HTW50L	HTW51L			DPV5000L	