

WEX2000M/3000M Type

SEC-Modular Tools

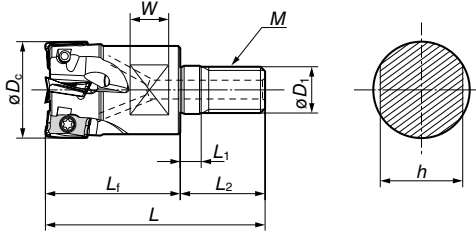
Rake Angle	Radial	10° to 18°, 8° to 15°	Max. Depth of Cut	10mm	90°	Max. Depth of Cut	14mm	90°	<table border="1"> <tr> <td>P</td><td>M</td><td>K</td><td>N</td><td>S</td><td>H</td> </tr> <tr> <td>Steel</td><td>Stainless Steel</td><td>Cast Iron</td><td>Non-Ferrous Metal</td><td>Exotic Alloy</td><td>Hardened Steel</td> </tr> </table>	P	M	K	N	S	H	Steel	Stainless Steel	Cast Iron	Non-Ferrous Metal	Exotic Alloy	Hardened Steel
	P	M	K	N	S	H															
Steel	Stainless Steel	Cast Iron	Non-Ferrous Metal	Exotic Alloy	Hardened Steel																
Axial		14° to 25°, 16° to 24°		(2000M Type)	(3000M Type)		(2000M Type)	(3000M Type)													



WEX2000M Type



WEX3000M Type



Head (WEX 2000M)

Cat. No.	Stock	Dimension (mm)										No. of Teeth
		øD _c	øD ₁	M	L	L _f	L ₁	L ₂	W	h		
WEX 2016M08Z2	●	16	8.5	M8	42	25	5	17	8	13	2	
2018M08Z2	●	18	8.5	M8	42	25	5	17	8	13	2	
WEX 2020M10Z3	●	20	10.5	M10	49	30	5	19	8	15	3	
2022M10Z3	●	22	10.5	M10	49	30	5	19	8	15	3	
WEX 2025M12Z4	●	25	12.5	M12	56	35	5	21	10	19	4	
2028M12Z4	●	28	12.5	M12	56	35	5	21	10	19	4	
WEX 2030M16Z4	●	30	17.0	M16	63	40	5	23	10	24	4	
2032M16Z5	●	32	17.0	M16	63	40	5	23	10	24	5	
2040M16Z6	●	40	17.0	M16	63	40	5	23	10	24	6	

Inserts are not included.

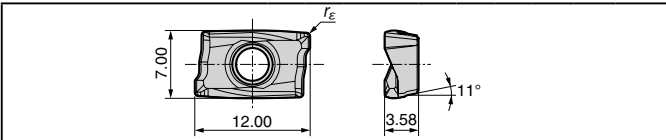
Head (WEX 3000M)

Cat. No.	Stock	Dimension (mm)										No. of Teeth
		øD _c	øD ₁	M	L	L _f	L ₁	L ₂	W	h		
WEX 3025M12Z2	●	25	12.5	M12	56	35	5	21	10	19	2	
3028M12Z2	●	28	12.5	M12	56	35	5	21	10	19	2	
WEX 3030M16Z3	●	30	17.0	M16	63	40	5	23	10	24	3	
3032M16Z3	●	32	17.0	M16	63	40	5	23	10	24	3	
3035M16Z3	●	35	17.0	M16	63	40	5	23	10	24	3	
WEX 3040M16Z4	●	40	17.0	M16	63	40	5	23	10	24	4	

Inserts are not included.

Inserts

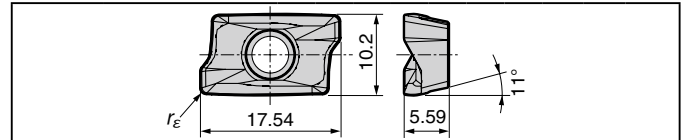
P Steel M Stainless Steel K Cast Iron N Non-Ferrous Metal S Exotic Alloy H Hardened Steel



Application	Grade		Coated Carbide						Carbide	DLC
	High Speed/Light	P			K		M	S	K	N
	General Purpose		M	M	K		M	S		N
	Roughing		M	M	K		M	S		N
Cat. No.	ACP100	ACP200	ACP300	ACK200	ACK300	ACM200	ACM300	H1	DL1000	Dimensions
						New	New			r _ε
AXMT 123504PEER-G	●	●	●	●	●					0.4
123508PEER-G	●	●	●	●	●					0.8
123512PEER-G	●	●	●	●	●					1.2
AXMT 123504PEER-H	●	●	●	●	●					0.4
123508PEER-H	●	●	●	●	●					0.8
123512PEER-H	●	●	●	●	●					1.2
AXMT 123504PEER-E						●	●			0.4
123508PEER-E			▲			●	●			0.8
123512PEER-E						●	●			1.2
AXMT 123508PEER-EH			▲			●	●			0.8
AXET 123502PEFR-S								●	●	0.2
123504PEFR-S								●	●	0.4
123508PEFR-S								●	●	0.8

Inserts (Common)

P Steel M Stainless Steel K Cast Iron N Non-Ferrous Metal S Exotic Alloy H Hardened Steel



Application	Grade		Coated Carbide						Carbide	DLC
	High Speed/Light	P			K		M	S	K	N
	General Purpose		M	M	K		M	S		N
	Roughing		M	M	K		M	S		N
Cat. No.	ACP100	ACP200	ACP300	ACK200	ACK300	ACM200	ACM300	H1	DL1000	Dimensions
						New	New			r _ε
AXMT 170508PEER-L	●	●	●	●	●					0.8
AXMT 170504PEER-G	●	●	●	●	●					0.4
170508PEER-G	●	●	●	●	●					0.8
170512PEER-G	●	●	●	●	●					1.2
170516PEER-G	●	●	●	●	●					1.6
170520PEER-G *	●	●	●	●	●					2.0
170530PEER-G *	●	●	●	●	●					3.0
AXMT 170508PEER-H	●	●	●	●	●					0.8
170512PEER-H	●	●	●	●	●					1.2
AXMT 170504PEER-E						●	●			0.4
170508PEER-E			▲			●	●			0.8
170512PEER-E						●	●			1.2
170516PEER-E						●	●			1.6
170520PEER-E *						●	●			2.0
170530PEER-E *						●	●			3.0
AXMT 170508PEER-EH			▲			●	●			0.8
AXET 170502PEFR-S								●	●	0.2
170504PEFR-S								●	●	0.4
170508PEFR-S								●	●	0.8

* Cutter body modification is required.

Endmill Identification

WEX 2 016 M08 Z2

(1) Cutter Series (2) Insert size (3) Diameter (4) Mounting Screw (5) No. of Flutes

Spare Parts (WEX2000M)

Spanner	Screw	Applicable Endmill
BFTX03051P 2.0	TRDR081P	WEX2016M, WEX2018M
BFTX03061P 2.0		WEX2020M to WEX2040M

Recommended Tightening Torque (N·m) Anti-seizure cream SUMI-P included in the package.

Spare Parts (WEX3000M)

Spanner	Screw	Applicable Endmill
BFTX04071P 3.0	TRDR151P	WEX3025M to WEX3030M
BFTX04091P 3.0		WEX3032M to WEX3040M

Recommended Tightening Torque (N·m) Anti-seizure cream SUMI-P included in the package.

Recommended Cutting Conditions H87