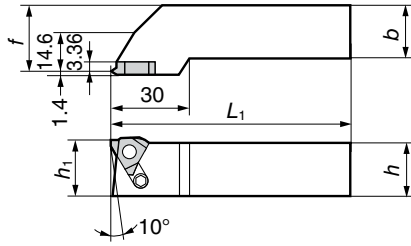
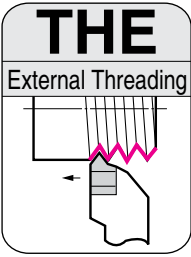


THE Type

External Threading

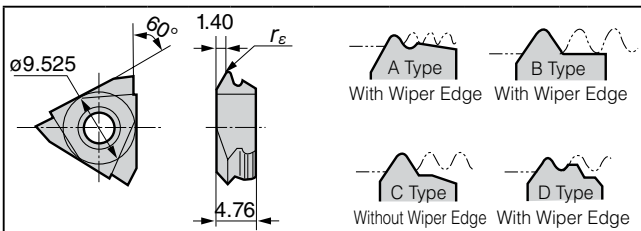
- Metric Threads
- Whitworth Threads
- Pipe Tapered Threads



■ Holders

Cat. No.	Stock	Dimensions (mm)				
		h	b	L ₁	f	h ₁
THE R-33	●	20	20	125	25.0	20
THE R-44	●	25	25	150	32.2	25

■ Inserts



Cat. No.	Stock					Pitch		Nose Radius r _E	Included Angle θ°	Edge Type	Applicable Holder
	Cermet		Carbide			mm	TPI				
	T1500A	T1200A	T12A	ST10P	A30						
NE R080			●	●	0.80	—	0.08	60	A	THE R-33 THE R-44	
NE R100			●	●	1.00	—	0.11	60	A		
NE R125			●	●	1.25	—	0.15	60	B		
NE R150			●	●	1.50	—	0.18	60	B		
NE R175			●	●	1.75	—	0.22	60	B		
NE R200			●	●	2.00	—	0.25	60	B		
NE R250			●	●	2.50	—	0.33	60	B		
NE R0815	●	▲	●	●	0.80 to 1.50	—	0.08	60	C		
NE R1530	●	▲	●	●	1.50 to 3.00	—	0.18	60	C		
WE R1410	●	▲			—	14 to 10	0.21	55	C		
WE R2416	●	▲			—	24 to 16	0.11	55	C		
PTE R28					—	28	0.99	55	D		
PTE R19					—	19	0.15	55	D		

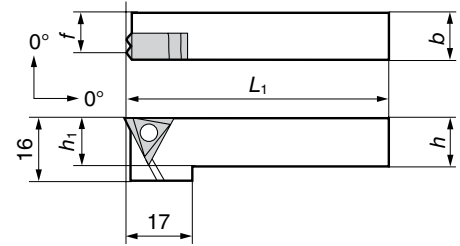
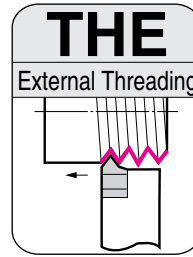
■ Spare Parts

Applicable Holder	Drawing Pin	Set Screw	Spanner
THE R-33 THE R-44	SR124	BTD0510	LH025

THE Type

SEC-External Holders (Mini Holders)

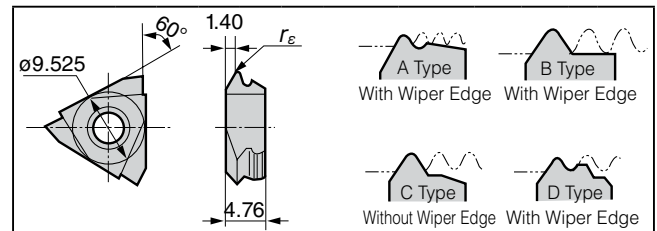
- Metric Threads
- Whitworth Threads
- Pipe Tapered Threads



■ Holders

Cat. No.	Stock	Dimensions (mm)				
		h	b	L ₁	f	h ₁
THE R1010-33	●	10	10	100	8.6	10
THE R1212-33	●	12	12	100	10.6	12

■ Inserts



Cat. No.	Stock					Pitch		Nose Radius r _E	Included Angle θ°	Edge Type	Applicable Holder
	Cermet		Carbide			mm	TPI				
	T1500A	T1200A	T12A	ST10P	A30						
NE R080			●	●	0.80	—	0.08	60	A	THE R1010-33 THE R1212-33	
NE R100			●	●	1.00	—	0.11	60	A		
NE R125			●	●	1.25	—	0.15	60	B		
NE R150			●	●	1.50	—	0.18	60	B		
NE R175			●	●	1.75	—	0.22	60	B		
NE R200			●	●	2.00	—	0.25	60	B		
NE R250			●	●	2.50	—	0.33	60	B		
NE R0815	●	▲	●	●	0.80 to 1.50	—	0.08	60	C		
NE R1530	●	▲	●	●	1.50 to 3.00	—	0.18	60	C		
WE R1410	●	▲			—	14 to 10	0.21	55	C		
WE R2416	●	▲			—	24 to 16	0.11	55	C		
PTE R28					—	28	0.99	55	D		
PTE R19					—	19	0.15	55	D		

■ Spare Parts

Applicable Holder	Screw	Spanner
THE R1010/1212-33 THE L1010/1212-33	BFX0410R BFX0410L	TH025