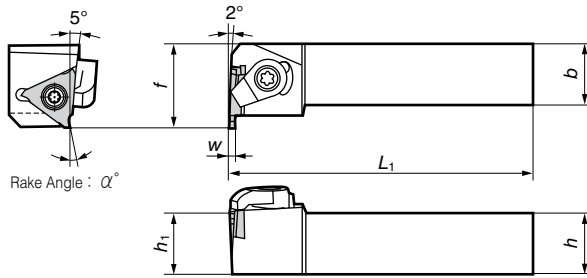
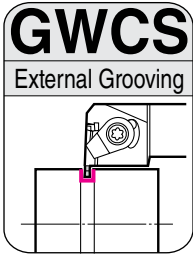


External L-Styled (Side Cut)



Note 1: Refer to insert table on this page for α° dimensions.
 Note 2: Figures show right hand tools.

■ Holders

Right handed holders are applicable with **left handed** inserts.

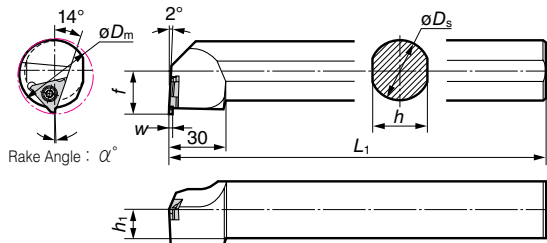
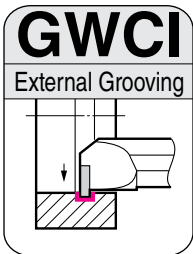
Cat. No.	Stock		Dimensions (mm)					Grooving Width (mm)	Max. Grooving Depth (mm)	* Group No.
	R	L	<i>h</i>	<i>b</i>	<i>L</i> ₁	<i>f</i>	<i>h</i> ₁	<i>w</i>		
GWCS R/L2020-3	●	●	20	20	125	25	20	0.33 to 2.80	0.8 to 2.5	①
GWCS R/L2525-3	●	●	25	25	150	30	25	0.33 to 2.80	0.8 to 2.5	①
GWCS R/L2020-15	●	●	20	20	125	27	20	1.00 to 1.45	2.0	②
GWCS R/L2020-25	●	●	20	20	125	27	20	1.50 to 2.30	3.5	③
GWCS R/L2020-35	●	●	20	20	125	27	20	2.50 to 4.80	5.0	④
GWCS R/L2525-15	●	●	25	25	150	32	25	1.00 to 1.45	2.0	②
GWCS R/L2525-25	●	●	25	25	150	32	25	1.50 to 2.30	3.5	③
GWCS R/L2525-35	●	●	25	25	150	32	25	2.50 to 4.80	5.0	④

* Refer to pages F6, F7, and F8 for TGA type inserts applicable with the GWCS holder.
 Select applicable inserts for the holders by using matching group numbers.

■ Spare Parts

Screw	Recommended Tightening Torque (N·m)	Spanner	Clamp	Double Screw	Spanner
BFTX0409N	3.4	TRX15	CCM6BR/L	WB6-20TL/T	LT20
BFTX0511N	5.0	TRX20	CCM8UR/L	WB8-22TL/T	LT27

Internal Grooving



Note 1: Refer to insert table on this page for α° dimensions.
 Note 2: Figures show right hand tools.

■ Holders

Right handed holders are applicable with **left handed** inserts.

Cat. No.	Stock		Dimensions (mm)					Min. Bore	Grooving Width (mm)	Max. Grooving Depth (mm)	* Group No.
	R	L	ϕD_s	<i>h</i>	<i>L</i> ₁	<i>f</i>	<i>h</i> ₁	ϕD_m	<i>w</i>		
GWCI R/L325	●	●	25	23	220	17.5	11.5	35	0.33 to 2.80	0.5 to 2.0	①
GWCI R/L432	●	●	32	30	250	23.0	15.0	40	1.25 to 4.80	1.7 to 2.5	②③④

* Refer to pages F6, F7, and F8 for TGA type inserts applicable with the GWCI holder.
 Select applicable inserts for the holders by using matching group numbers.

■ Spare Parts

Screw	Recommended Tightening Torque (N·m)	Spanner
BFTX0409N	3.4	TRX15
BFTX0511N	5.0	TRX20

● Rake Angle when Fitted on Holder (α°)

	Coated Carbide	Carbide	Coated Cermet	Cermet		SUMIBORON		SUMIDIA
	AC530U	H1	T3000Z	T1500A	T1200A	BN2000	BN250	DA2200
Ext. Grooving GWC GWCS	10°	20°	10°	5°	5°	0°	0°	10°
Int. Grooving GWCI	1°	11°	1°	- 4°	- 4°	- 9°	- 9°	1°