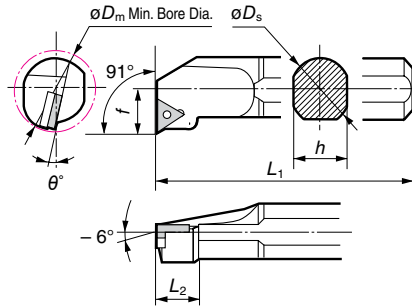
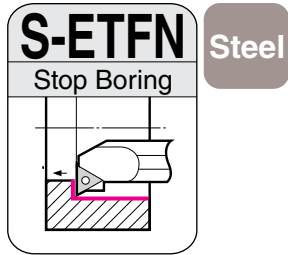
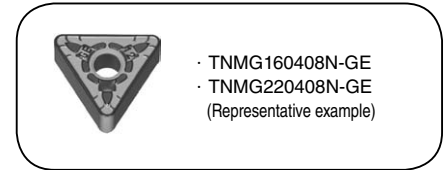




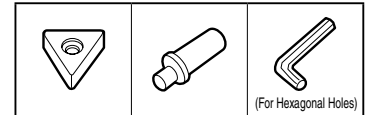
SEC-Boring Bars/SUMIBORON Small Hole Boring Bars S-ETFN/BNZ Type



Insert



Spare Parts

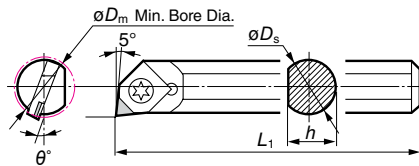
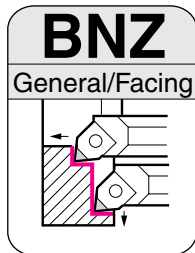


■ Holder Right handed toolholders are applicable with left handed or neutral inserts.
Left handed toolholders are applicable with right handed or neutral inserts.

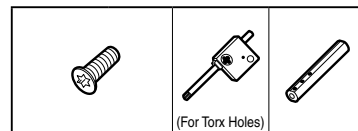
Above figures show right hand tools.

Shank	Cat. No.	Conventional Cat. No.	Stock		Dimensions (mm)							Applicable Insert		Shim	Pin	Wrench
			R	L	θD_m	θD_s	h	L_1	f	L_2	θ°	Cat. No.	Featured page			
Steel	S25R-ETFN R/L1604-34	BTFN325 R/L	●		34	25	23	200	17	18	-12	TN □□1604□□	From B54	STW323	CPB34 CPB35	LH025
	S32S-ETFN R/L1604-44	BTFN332 R/L	●		44	32	30	250	22	20	-10					
	S40T-ETFN R/L2204-54	BTFN440 R/L	●		54	40	37	300	27	25	-10	TN □□2204□□	B59	STW434	CPB44T CPB45T	LH030
	S50U-ETFN R/L2204-70	BTFN450 R/L	●		70	50	47	350	35	32	-10					

SUMIBORON



Spare Parts

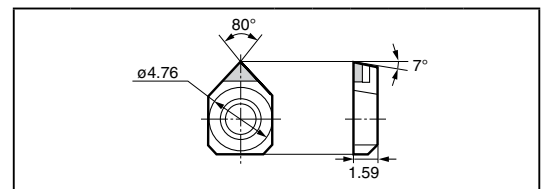


Holder

Cat. No.	Stock	Dimensions (mm)					Screw	Recommended Tightening Torque (N·m)	Wrench	Adaptor Sleeve
		θD_m	θD_s	h	L_1	θ°				
BNZ 606R	●	7.0	6.0	5.5	80	-14	BFTX0204N	0.5	TRX06	HBB 616
BNZ 608R	●	9.0	8.0	7.5	100	-12				HBB 816
BNZ 610R	●	11.0	10.0	9.5	125	-10				—
BNZ 612R	●	13.0	12.0	11.0	130	-8				—
BNZ 616R	●	17.0	16.0	15.0	145	-6				—
BNZ 620R	●	21.0	20.0	19.0	160	-5				—

Sleeve		Stock	θD_s	Applicable Holder
$\phi 16$	ϕD_s	●	6	BNZ 606R
15	100	●	8	BNZ 608R

Insert (SUMIBORON)



	Cat. No.	Stock					Dimensions (mm)
		BN1000	BN2000	BN250	BN7000	BN700	
1pc pack	NU-ZNEX 040102	●	●	▲	●	●	0.2
10pc pack	NU-ZNEX 040104	●	●	▲	●	●	0.4
10pc pack	T-NU-ZNEX 040102		●	▲			0.2
10pc pack	T-NU-ZNEX 040104		●	▲			0.4