

SEC- 40 Type Tool Holders

General Turning

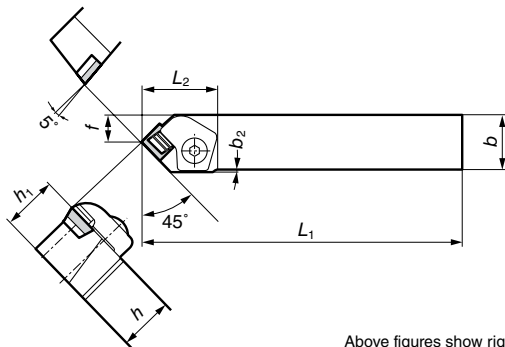
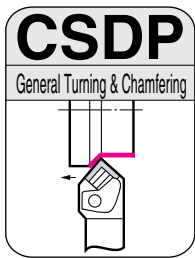
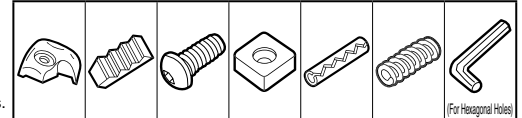
Clamp-on

■ Holders

Above figures show right hand tools.

Cat. No.	Conventional Cat. No.	Stock		Dimensions (mm)							Applicable Inserts		Clamp	Chipbreaker	Bolt	Shim	Shim Pin	Spring	Spanner	
		R	L	h	b	L ₁	f	h ₁	L ₂	b ₃	Cat. No.	Ref. Page								
CSRP R/L1919-L12	FP11 R/L-33	●		19	19	140	15.5	19	34.5	5.0										
CSRP R/L2525-N12	FP11 R/L-44A	●		25	25	160	21.5	25	34.5	-	SP□□1203	B99	DCR/L1	CBD4R/L	BH0824R/L BH0830R/L BH0830R/L	SSPD422			LH040	
CSRP R/L3225-N12	FP11 R/L-45A			32	25	160	21.5	32	34.5	-							SPP3	DSP5		
CSRP R/L2525-N15	FP11 R/L-44B	●		25	25	160	21.5	25	40.0	4.5	SP□□1504	B100	DCR/L3	CBD5R/L	BH1030R/L BH1036R/L	SSPD522			LH050	
CSRP R/L3232-N15	FP11 R/L-55			32	32	180	26.0	32	40.0	-										

■ Spare Parts



SEC- 40 Type Tool Holders

General Turning

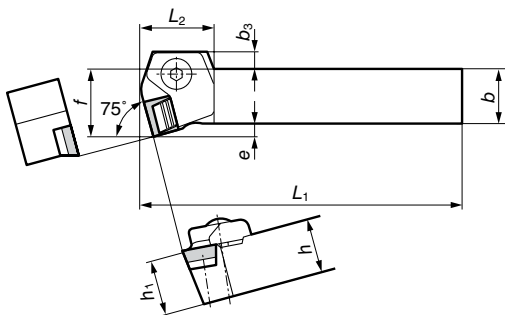
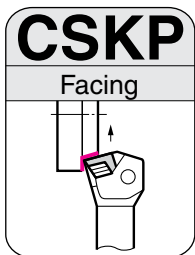
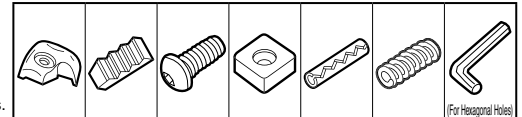
Clamp-on

■ Holders

Above figures show right hand tools.

Cat. No.	Conventional Cat. No.	Stock		Dimensions (mm)							Applicable Inserts		Clamp	Chipbreaker	Bolt	Shim	Shim Pin	Spring	Spanner	
		R	L	h	b	L ₁	f	h ₁	L ₂	b ₂	Cat. No.	Ref. Page								
CSDP R/L1919-L12	FP14 R/L-33	●		19	19	140	10.5	19	35	6										
CSDP R/L2525-N12	FP14 R/L-44A	●		25	25	160	12.5	25	35	2	SP□□1203	B99	DCR/L1	CBD4R/L	BH0824R/L BH0830R/L BH0830R/L	SSPD422	SPP3	DSP5	LH040	
CSDP R/L3225-N12	FP14 R/L-45A			32	25	160	12.5	32	35	2										

■ Spare Parts



SEC- 40 Type Tool Holders

General Turning

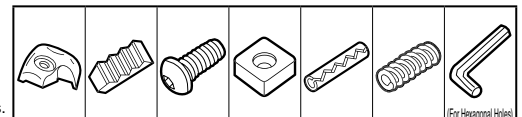
Clamp-on

■ Holders

Above figures show right hand tools.

Cat. No.	Conventional Cat. No.	Stock		Dimensions (mm)							Applicable Inserts		Clamp	Chipbreaker	Bolt	Shim	Shim Pin	Spring	Spanner	
		R	L	h	b	L ₁	f	h ₁	L ₂	e	b ₃	Cat. No.								Ref. Page
CSKP R/L1919-L12	FP15 R/L-33			19	19	140	25	19	22	6	7									
CSKP R/L2525-N12	FP15 R/L-44A	●		25	25	160	32	25	22	7	-	SP□□1203	B99	DCL/R1	CBD4L/R	BH0830L/R BH0830L/R	SSPD422			LH040
CSKP R/L3225-N12	FP15 R/L-45A			32	25	160	32	32	22	7	-						SPP3	DSP5		
CSKP R/L2525-N15	FP15 R/L-44B	●		25	25	160	31	25	28	6	7	SP□□1504	B100	DCL/R3	CBD5L/R	BH1030L/R BH1036L/R	SSPD522			LH050
CSKP R/L3232-Q15	FP15 R/L-55			32	32	180	38	32	28	6	-									

■ Spare Parts



Note: When using right/left handed type inserts for facing, holder and insert are opposite handed.

C External Holders

Positive Inserts

C

D

R

S

T

V

W