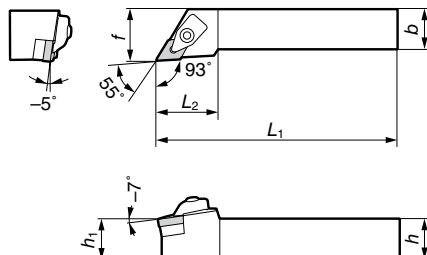
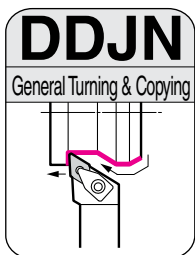
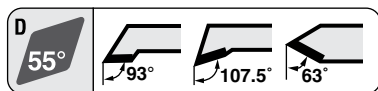


DDJN / DDHN / DDNN Type



SEC- D Type Tool Holders General Turning and Copying
Double Clamp

■ Holders

Above figures show right hand tools.

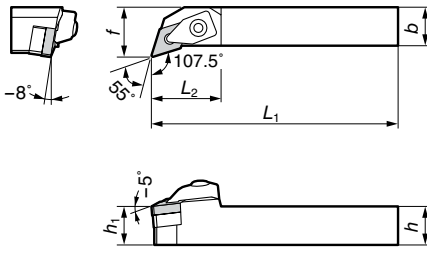
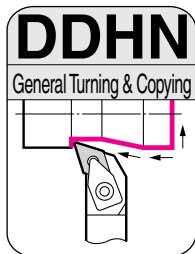
Cat. No.	Stock		Dimensions (mm)						Applicable Inserts	
	R	L	h	b	L ₁	f	h ₁	L ₂	Cat. No.	Ref. Page
DDJN R/L2020K15	●	●	20	20	125	25	20	38	DN□□1504	From B31
DDJN R/L2525M15	●	●	25	25	150	32	25	38		From B34
DDJN R/L2525M15E	●	●	25	25	150	32	25	38	DN□□1506	From B34

■ Spare Parts

* Item is sold separately

SCP-2	5.0	DNS1504 DNS1506	BFTX0409N	TRX15 (*)	LH040	LH025

Clamp Set Parts



SEC- D Type Tool Holders General Turning and Copying
Double Clamp

■ Holders

Above figures show right hand tools.

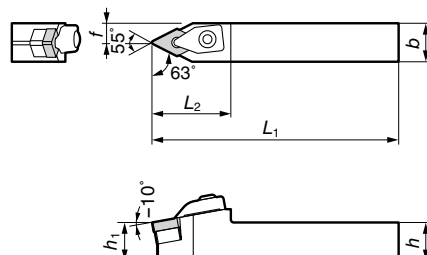
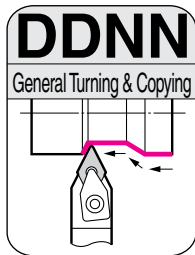
Cat. No.	Stock		Dimensions (mm)						Applicable Inserts	
	R	L	h	b	L ₁	f	h ₁	L ₂	Cat. No.	Ref. Page
DDHN R/L2020K15	●	●	20	20	125	25	20	35	DN□□1504	From B31
DDHN R/L2525M15	●	●	25	25	150	32	25	35		From B31

■ Spare Parts

* Item is sold separately

SCP-2	5.0	DNS1504	BFTX0409N	TRX15 (*)	LH040	LH025

Clamp Set Parts



SEC- D Type Tool Holders General Turning and Copying
Double Clamp

■ Holders

Cat. No.	Stock	Dimensions (mm)						Applicable Inserts	
		h	b	L ₁	f	h ₁	L ₂	Cat. No.	Ref. Page
DDNN N2020K15	●	20	20	125	10.5	20	40	DN□□1504	From B31
DDNN N2525M15	●	25	25	150	13.0	25	40		From B31

■ Spare Parts

* Item is sold separately

SCP-2	5.0	DNS1504	BFTX0409N	TRX15 (*)	LH040	LH025

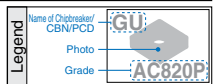
Clamp Set Parts

Applicable Inserts ← DDJN / DDHN / DDNN / PDJN Type

Recommended Inserts

- Please also refer to the selection guide for inserts. (from page A8)
- Some combinations need to be made-to-order or cannot be manufactured.

Applications	P (Steel)			M (Stainless Steel)			K (Cast Iron)			N (Non-ferrous)	H (Hardened Steel)	
	Finishing	Medium	Rough Cutting	Finishing	Medium	Rough Cutting	High-Speed/Finishing	Finishing to Medium Cutting	Medium to Rough Cutting	—	Coated	Non-coated
Continuous Cutting	SU T1500Z	GU AC810P	MU AC820P	EF AC610M	EG AC6030M	EM AC6030M	SUMIBORON BN7000	UZ AC405K	GZ AC405K	SUMIDIA DA1000	SUMIBORON BNC2010	SUMIBORON BN1000
General Cutting	SU AC810P	GU AC820P	MU AC820P	EF AC6030M	EG AC6030M	EM AC6040M	SUMIBORON BN7000	GZ AC415K	GZ AC415K	SUMIDIA DA1000	SUMIBORON BNC2020	SUMIBORON BN2000
Interrupted Cutting	SX AC820P	UX AC830P	MX AC830P	EF AC6030M	EG AC6040M	EM AC6040M	SUMIBORON BN7000	GZ AC420K	No Breaker AC420K	SUMIDIA DA1000	SUMIBORON BNC300	SUMIBORON BN350
Recommended Cutting Conditions	From A8			From A18			From A22			From A32	From A28	



External Holders

Negative Inserts

C

D

R

S

T

V

W