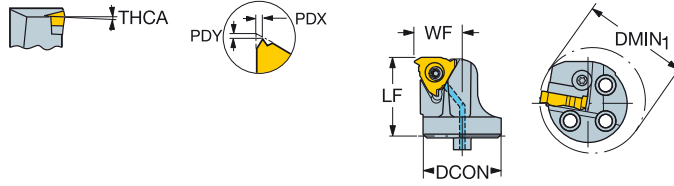
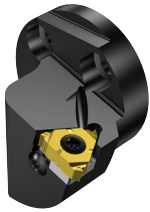


CoroThread® 266 head for thread turning

Screw clamp design

CoroTurn® SL – Internal coolant supply



266 R/LL

IC	CZC _{MS}	DMIN ₁	OHX	CNSC	Ordering code	Dimensions, mm, inch									
						DCON	LF	WF	HF	THCA	CP BarPSI	Nm	Kg	MIID	
16	3/8	20	25	25	1	SL-266R/LKF-202514-16	20	25.0	14.0	0	1	10	3.0	0.1	266.RL-16..
			.984	.984			.787	0.984	.551	.000		145			266.LL-16..
	25	32	25	1	SL-266R/LKF-252517-16	25	25.0	17.0	0	1	10	3.0	0.1	266.LL-16..	
		1.259	.984			.984	0.984	.669	.000		145			266.LL-16..	
32	40	32	32	32	1	SL-266R/LKF-323222-16	32	32.0	22.0	0	1	10	3.0	0.1	266.LL-16..
			1.574	1.260			1.260	1.260	.866	.000		145			266.LL-16..
	40	50	32	1	SL-266R/LKF-403227-16	40	32.0	27.0	0	1	10	3.0	0.2	266.LL-16..	
		1.968	1.260			1.575	1.260	1.063	.000		145			266.LL-16..	
22	1/2	25	32	28	1	SL-266R/LKF-252819-22	25	28.0	19.0	0	1	10	5.0	0.0	266.LL-22..
			1.259	1.102			.984	1.102	.748	.000		145			266.LL-22..
	32	40	32	1	SL-266R/LKF-323222-22	32	32.0	21.9	0	1	10	5.0	0.0	266.LL-22..	
		1.574	1.260			1.260	1.260	.862	.000		145			266.LL-22..	
40	50	32	32	32	1	SL-266R/LKF-403227-22	40	32.0	26.9	0	1	10	5.0	0.1	266.LL-22..
			1.968	1.260			1.575	1.260	1.059	.000		145			266.LL-22..
27	5/8	40	50	36	1	SL-266R/LKF-403627-27	40	36.0	26.9	0	1	10	7.5	0.1	266.LL-27..
			1.968	1.417			1.575	1.417	1.059	.000		145			266.LL-27..

N = Neutral, R = Right hand, L = Left hand

For PDX/PDY values, see insert page.
 For infeed recommendations, see page C91.
 Angle of inclination (THCA) with different shims, see page C89.

