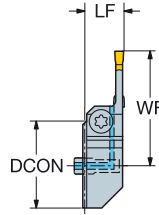
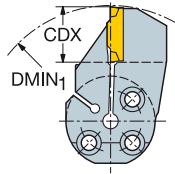
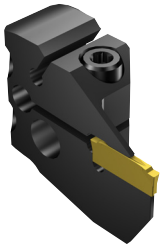


# CoroCut® 1-2 head for grooving

Screw clamp design

CoroTurn® SL – Internal coolant supply



SSC	CZC <sub>MS</sub>	CDX	DMIN <sub>1</sub>	OHX	CNSC	Ordering code	Dimensions, mm, inch							MIID	
							DCON	LF	WF	HF	CP Bar/PSI	Nm	Kg		
D	25	12.0	145.0	13.3	1	570-25R/L123D12B	25	14.0	30.9	0.0	10	2.0	0.1	N123D2-0150-0002-CM	
		.472	5.709	.522			.984	.551	1.215	.000	145				
		32	12.0	145.0	13.3	1	570-32R/L123D12B	32	14.0	34.4	0.0	10	2.0	0.1	N123D2-0150-0002-CM
		.472	5.709	.522			1.260	.551	1.352	.000	145				
E	25	15.0	139.0	13.0	1	570-25R/L123E15B	25	14.0	33.9	0.0	10	2.0	0.1	N123E2-0200- GM	
		.591	5.472	.512			.984	.551	1.333	.000	145				
		32	15.0	139.0	13.0	1	570-32R/L123E15B	32	14.0	37.4	0.0	10	2.0	0.1	N123E2-0200- GM
		.591	5.472	.512			1.260	.551	1.470	.000	145				
F	25	15.0	143.0	12.8	1	570-25R/L123F15B	25	14.0	33.9	0.0	10	2.0	0.1	N123F2-0250- GM	
		.591	5.630	.502			.984	.551	1.333	.000	145				
		32	15.0	139.0	12.8	1	570-32R/L123F15B	32	14.0	37.4	0.0	10	2.0	0.1	N123F2-0250- GM
		.591	5.472	.502			1.260	.551	1.470	.000	145				
G	25	18.0	147.0	12.5	1	570-25R/L123G18B	25	14.0	37.6	0.0	10	3.0	0.1	N123G2-0300- GM	
		.709	5.787	.492			.984	.551	1.480	.000	145				
		32	18.0	147.0	12.5	1	570-32R/L123G18B	32	14.0	41.1	0.0	10	3.0	0.1	N123G2-0300- GM
		.709	5.787	.492			1.260	.551	1.618	.000	145				
		40	18.0	147.0	12.5	1	570-40R/L123G18B	40	14.0	45.1	0.0	10	3.0	0.2	N123G2-0300- GM
		.709	5.787	.492			1.575	.551	1.776	.000	145				
H	32	23.0	95.0	16.0	1	570-32R/L123H23B	32	18.0	46.1	0.0	10	3.0	0.2	N123H2-0400- GM	
		.906	3.740	.630			1.260	.709	1.815	.000	145				
		40	23.0	95.0	16.0	1	570-40R/L123H23B	40	18.0	50.1	0.0	10	3.0	0.2	N123H2-0400- GM
		.906	3.740	.630			1.575	.709	1.972	.000	145				
J	32	18.0	95.0	15.5	1	570-32R/L123J18B	32	18.0	41.1	0.0	10	4.0	0.1	N123J2-0500- GM	
		.709	3.740	.610			1.260	.709	1.618	.000	145				
		40	18.0	95.0	15.5	1	570-40R/L123J18B	40	18.0	45.1	0.0	10	3.0	0.2	N123J2-0500- GM
		.709	3.740	.610			1.575	.709	1.776	.000	145				
K	40	18.0	95.0	15.0	1	570-40R/L123K18B	40	18.0	45.1	0.0	10	4.0	0.2	N123K2-0600- GM	
		.709	3.740	.591			1.575	.709	1.776	.000	145				

SSC = To correspond with SSC on insert.

R = Right hand, L = Left hand

