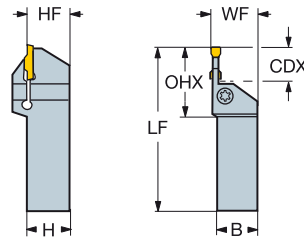
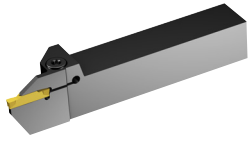


CoroCut® 1-2 shank tool for parting and grooving

Screw clamp design



Metric version

D						Dimensions							Nm	Kg	MIID
	SSC	CZC _{MS}	CDX	OHX	CNSC	Ordering code	B	H	LF	WF	HF				
E	D	12 x 12	8.0	25	0	R/LF123D08-1212B	12	12	125	13	12	2.5	0.1	N123D2-0150-0002-CM	
		16 x 16	8.0	25	0	R/LF123D08-1616B	16	16	100	17	16	2.5	0.2	N123D2-0150-0002-CM	
		20 x 20	8.0	25	0	R/LF123D08-2020B	20	20	125	21	20	2.5	0.4	N123D2-0150-0002-CM	
		25 x 25	8.0	25	0	R/LF123D08-2525B	25	25	150	26	25	2.5	0.8	N123D2-0150-0002-CM	
		16 x 16	15.0	33	0	R/LF123D15-1616B	16	16	100	17	16	3.5	0.2	N123D2-0150-0002-CM	
		20 x 20	15.0	33	0	R/LF123D15-2020B	20	20	125	21	20	3.5	0.4	N123D2-0150-0002-CM	
E		25 x 25	15.0	33	0	R/LF123D15-2525B	25	25	150	26	25	3.5	0.7	N123D2-0150-0002-CM	
	E	12 x 12	8.0	25	0	R/LF123E08-1212B	12	12	125	13	12	2.5	0.1	N123E2-0200-0002-CM	
		16 x 16	8.0	25	0	R/LF123E08-1616B	16	16	125	17	16	2.5	0.2	N123E2-0200-0002-CM	
		20 x 20	8.0	25	0	R/LF123E08-2020B	20	20	125	21	20	2.5	0.4	N123E2-0200-0002-CM	
		25 x 25	8.0	25	0	R/LF123E08-2525B	25	25	150	26	25	2.5	0.8	N123E2-0200-0002-CM	
		12 x 12	12.0	30	0	R/LF123E12-1212B	12	12	125	13	12	3.5	0.1	N123E2-0200-0002-CM	
		16 x 16	15.0	33	0	R/LF123E15-1616B	16	16	125	17	16	4.0	0.2	N123E2-0200-0002-CM	
		20 x 20	15.0	33	0	R/LF123E15-2020B	20	20	125	21	20	4.0	0.4	N123E2-0200-0002-CM	
		25 x 25	15.0	33	0	R/LF123E15-2525B	25	25	150	26	25	4.0	0.6	N123E2-0200-0002-CM	
	F	F	12 x 12	10.0	29	0	R/LF123F10-1212B	12	12	125	13	12	3.0	0.1	N123F2-0250-0002-CM
			16 x 16	10.0	29	0	R/LF123F10-1616B	16	16	125	17	16	3.0	0.2	N123F2-0250-0002-CM
			20 x 20	10.0	29	0	R/LF123F10-2020B	20	20	125	21	20	3.0	0.4	N123F2-0250-0002-CM
		25 x 25	10.0	29	0	R/LF123F10-2525B	25	25	150	26	25	3.0	0.8	N123F2-0250-0002-CM	
		16 x 16	20.0	40	0	R/LF123F20-1616B	16	16	125	17	16	4.0	0.2	N123F2-0250-0002-CM	
		20 x 20	20.0	40	0	R/LF123F20-2020B	20	20	125	21	20	4.0	0.4	N123F2-0250-0002-CM	
G		25 x 25	20.0	40	0	R/LF123F20-2525B	25	25	150	26	25	4.0	0.7	N123F2-0250-0002-CM	
		32 x 25	20.0	40	0	R/LF123F20-3225B	25	32	170	26	32	4.0	0.9	N123F2-0250-0002-CM	
	G	16 x 16	10.0	30	0	R/LF123G10-1616B	16	16	125	17	16	3.5	0.2	N123G2-0300-0003-TF	
		20 x 20	10.0	30	0	R/LF123G10-2020B	20	20	125	21	20	3.5	0.4	N123G2-0300-0003-TF	
		25 x 25	10.0	30	0	R/LF123G10-2525B	25	25	150	26	25	3.5	0.8	N123G2-0300-0003-TF	
		32 x 25	10.0	30	0	R/LF123G10-3225B	25	32	170	26	32	3.5	1.0	N123G2-0300-0003-TF	
		12 x 12	12.0	32	0	R/LF123G12-1212B	12	12	125	13	12	3.5	0.1	N123G2-0300-0003-TF	
		16 x 16	20.0	41	0	R/LF123G20-1616B	16	16	125	17	16	5.0	0.2	N123G2-0300-0003-TF	
		20 x 20	20.0	41	0	R/LF123G20-2020B	20	20	125	21	20	5.0	0.8	N123G2-0300-0003-TF	
		25 x 25	20.0	41	0	R/LF123G20-2525B	25	25	150	26	25	5.0	0.7	N123G2-0300-0003-TF	
		32 x 25	20.0	41	0	R/LF123G20-3225B	25	32	170	26	32	5.0	0.9	N123G2-0300-0003-TF	
		32 x 32	20.0	41	0	R/LF123G20-3232B	32	32	170	33	32	5.0	1.2	N123G2-0300-0003-TF	
H	H	16 x 16	13.0	34	0	R/LF123H13-1616B	16	16	125	17	16	4.5	0.2	N123H2-0400-0004-TF	
		20 x 20	13.0	34	0	R/LF123H13-2020BM	20	20	125	21	20	4.5	0.4	N123H2-0400-0004-TF	
		25 x 25	13.0	34	0	R/LF123H13-2525BM	25	25	150	26	25	4.5	0.7	N123H2-0400-0004-TF	
		32 x 25	13.0	34	0	R/LF123H13-3225BM	25	32	170	26	32	4.5	0.9	N123H2-0400-0004-TF	
		32 x 32	13.0	34	0	R/LF123H13-3232BM	32	32	170	33	32	4.5	1.4	N123H2-0400-0004-TF	
		16 x 16	25.0	47	0	R/LF123H25-1616B	16	16	125	17	16	7.0	0.2	N123H2-0400-0004-TF	
		20 x 20	25.0	47	0	R/LF123H25-2020BM	20	20	125	21	20	7.0	0.4	N123H2-0400-0004-TF	
		25 x 25	25.0	47	0	R/LF123H25-2525BM	25	25	150	26	25	7.0	0.7	N123H2-0400-0004-TF	
	32 x 25	25.0	47	0	R/LF123H25-3225BM	25	32	170	26	32	7.0	0.9	N123H2-0400-0004-TF		
	32 x 32	25.0	47	0	R/LF123H25-3232BM	32	32	170	33	32	7.0	1.2	N123H2-0400-0004-TF		

SSC = To correspond with SSC on insert.

R = Right hand, L = Left hand

