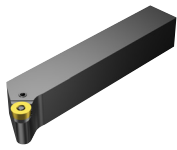


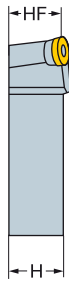
# T-Max® P shank tool for turning

## Lever clamp design

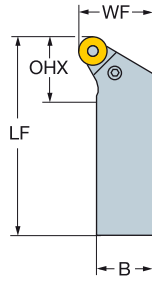
Round (pos)



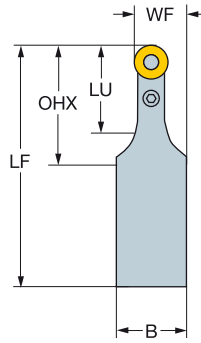
RCMX  
RCMT  
RCGX AL



PRGCR/L



PRDCN



### Metric version

E	CZC <sub>MS</sub>	LU	OHX	CNCS	Ordering code	Dimensions						MIID		
						B	H	LF	WF	HF	Nm		KG	
	10	20 x 20	20	0	PRGCR/L 2020K 10	20	20	125	25	20	2.0	0.40	RCMX 10 03 00	
		25 x 25	27	0	PRGCR/L 2525M 10	25	25	150	32	25	2.0	0.76	RCMX 10 03 00	
	12	20 x 20	20	0	PRGCR/L 2020K 12	20	20	125	25	20	4.0	0.40	RCMX 12 04 00	
		25 x 25	27	0	PRGCR/L 2525M 12	25	25	150	32	25	4.0	0.76	RCMX 12 04 00	
		32 x 25	32	0	PRGCR/L 3225P 12	25	32	170	32	32	4.0	1.14	RCMX 12 04 00	
	16	25 x 25	27	0	PRGCR/L 2525M 16	25	25	150	32	25	4.0	0.76	RCMX 16 06 00	
		32 x 25	33	0	PRGCR/L 3225P 16	25	32	170	32	32	4.0	1.14	RCMX 16 06 00	
	20	32 x 32	38	0	PRGCR/L 3232P 20	32	32	170	40	32	8.0	1.40	RCMX 20 06 00	
	25	40 x 40	50	0	PRGCR/L 4040S 25	40	40	250	50	40	16.0	3.70	RCMX 25 07 00	
	32	50 x 50	53	0	PRGCR/L 5050T 32	50	50	300	63	50	17.0	7.50	RCMX 32 09 00	
	10	20 x 20	25	30	0	PRDCN 2020K 10	20	20	125	15	20	2.0	0.36	RCMX 10 03 00
	12	25 x 25	28	33	0	PRDCN 2525M 12	25	25	150	18	25	4.0	0.60	RCMX 12 04 00
		32 x 25	28	33	0	PRDCN 3225P 12	25	32	170	18	32	4.0	0.91	RCMX 12 04 00
	16	32 x 25	35	40	0	PRDCN 3225P 16	25	32	170	20	32	4.0	0.91	RCMX 16 06 00
	20	32 x 32	40	45	0	PRDCN 3232P 20	32	32	170	26	32	8.0	1.14	RCMX 20 06 00
	25	40 x 40	50	50	0	PRDCN 4040S 25	40	40	250	32	40	16.0	2.60	RCMX 25 07 00
32	50 x 50	55	60	0	PRDCN 5050U 32	50	50	350	41	50	17.0	7.50	RCMX 32 09 00	

N = Neutral, R = Right hand, L = Left hand

