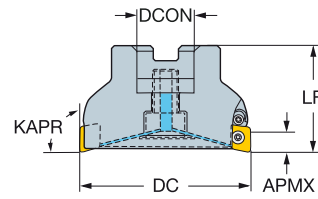
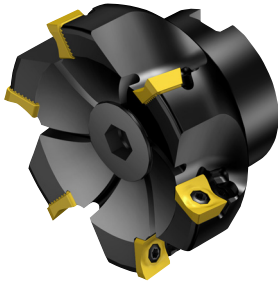

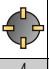




CoroMill® Century square shoulder milling cutter

Arbor

STDNO
KAPRISO 6462:2011
90°

Metric version

							Dimensions									
DC		CZC _{MS}	APMX	CNSC		Ordering code	DCON	ISO	DBC	DCX	LF			RPMX	CICT	MIID
50.0	11	22	11.0	1	4	R590-050Q22S-11M	22.0	A	50.0	40.0	3.0	0.60	41600	4	R590-1105..	
63.0	11	22	11.0	1	5	R590-063Q22S-11M	22.0	A	63.0	40.0	3.0	0.80	35100	5	R590-1105..	
80.0	11	27	11.0	1	6	R590-080Q27A-11M	27.0	A	80.0	50.0	3.0	0.30	27500	6	R590-1105..	
						R590-080Q27S-11M	27.0	A	80.0	50.0	3.0	1.50	27500	6	R590-1105..	
100.0	11	32	11.0	1	6	R590-100Q32S-11M	32.0	B	100.0	50.0	3.0	2.16	23800	6	R590-1105..	
						R590-100Q32A-11M	32.0	B	100.0	50.0	3.0	0.60	23800	6	R590-1105..	
125.0	11	40	11.0	1	8	R590-125Q40S-11M	40.0	B	125.0	63.0	3.0	3.34	20700	8	R590-1105..	
						R590-125Q40A-11M	40.0	B	125.0	63.0	3.0	0.90	20700	8	R590-1105..	
160.0	11	40S	11.0	1	10	R590-160Q40A-11M	40.0	C	66.7	160.0	63.0	3.0	1.70	17900	10	R590-1105..
						R590-160Q40S-11M	40.0	C	66.7	160.0	63.0	3.0	5.64	17900	10	R590-1105..
200.0	11	60	11.0	0	16	R590-200Q60A-11M	60.0	C	101.6	200.0	63.0	3.0	2.70	15700	16	R590-1105..
						R590-200Q60S-11M	60.0	C	101.6	200.0	63.0	3.0	7.30	15700	16	R590-1105..



J149



O5



Q1



Q35



Q16