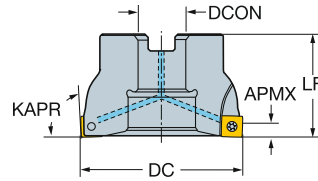
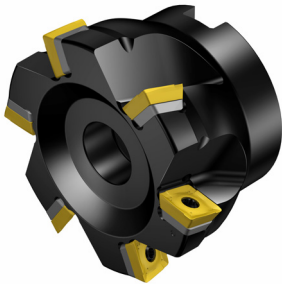


# CoroMill® 490 square shoulder milling cutter

Arbor

STDNO  
KAPRISO 6462:2011  
90°

## Metric version

DC		CZC <sub>MS</sub>	APMX	CNSC	Ordering code		Dimensions							CICT	MIID	
DC	ISO						DCON	ISO	DBC	DCX	LF	Nm	Kg	RPMX		
40.0	08	16	5.5	1	4	490-040Q16-08M	16.0	A	40.0	40.0	40.0	1.2	0.18	29300	4	490R-08T308
	08	16	5.5	1	6	490-040Q16-08H	16.0	A	40.0	40.0	40.0	1.2	0.18	29300	6	490R-08T308
44.0	08	16	5.5	1	5	490-044Q16-08M	16.0	A	44.0	40.0	40.0	1.2	0.30	27600	5	490R-08T308
50.0	08	22	5.5	1	4	490-050Q22-08L	22.0	A	50.0	40.0	40.0	1.2	0.40	25500	4	490R-08T308
	08	22	5.5	1	5	490-050Q22-08M	22.0	A	50.0	40.0	40.0	1.2	0.40	25500	5	490R-08T308
08	22	5.5	1	7	490-050Q22-08H	22.0	A	50.0	40.0	40.0	1.2	0.40	25500	7	490R-08T308	
	14	22	10.0	1	4	490-050Q22-14M	22.0	A	50.0	40.0	40.0	3.0	0.27	13700	4	490R-1404
14	22	10.0	1	5	490-050Q22-14H	22.0	A	50.0	40.0	40.0	3.0	0.27	22400	5	490R-1404	
	08	22	5.5	1	5	490-054Q22-08M	22.0	A	54.0	40.0	40.0	1.2	0.40	24300	5	490R-08T308
14	22	10.0	1	4	490-054Q22-14M	22.0	A	54.0	40.0	40.0	3.0	0.32	13000	4	490R-1404	
	08	22	5.5	1	5	490-063Q22-08L	22.0	A	63.0	40.0	40.0	1.2	0.55	22200	5	490R-08T308
08	22	5.5	1	6	490-063Q22-08M	22.0	A	63.0	40.0	40.0	1.2	0.55	22200	6	490R-08T308	
	08	22	5.5	1	8	490-063Q22-08H	22.0	A	63.0	40.0	40.0	1.2	0.55	22200	8	490R-08T308
14	22	10.0	1	5	490-063Q22-14M	22.0	A	63.0	40.0	40.0	3.0	0.39	11700	5	490R-1404	
	14	22	10.0	1	6	490-063Q22-14H	22.0	A	63.0	40.0	40.0	3.0	0.39	11700	6	490R-1404
66.0	08	22	5.5	1	6	490-066Q22-08M	22.0	A	66.0	40.0	40.0	1.2	0.50	21600	6	490R-08T308
	14	22	10.0	1	5	490-066Q22-14M	22.0	A	66.0	40.0	40.0	3.0	0.44	11400	5	490R-1404
80.0	08	27	5.5	1	6	490-080Q27-08L	27.0	A	80.0	50.0	50.0	1.2	1.25	19400	6	490R-08T308
	08	27	5.5	1	8	490-080Q27-08M	27.0	A	80.0	50.0	50.0	1.2	1.25	19400	8	490R-08T308
08	27	5.5	1	10	490-080Q27-08H	27.0	A	80.0	50.0	50.0	1.2	1.25	19400	10	490R-08T308	
	14	27	10.0	1	6	490-080Q27-14M	27.0	A	80.0	50.0	50.0	3.0	0.97	10100	6	490R-1404
14	27	10.0	1	8	490-080Q27-14H	27.0	A	80.0	50.0	50.0	3.0	0.97	10100	8	490R-1404	
	08	27	5.5	1	8	490-084Q27-08M	27.0	A	84.0	50.0	50.0	1.2	1.28	18900	8	490R-08T308
14	27	10.0	1	6	490-084Q27-14M	27.0	A	84.0	50.0	50.0	3.0	1.06	9800	6	490R-1404	
	08	32	5.5	0	6	490-100Q32-08L	32.0	B	100.0	50.0	50.0	1.2	2.10	17100	6	490R-08T308
08	32	5.5	0	8	490-100Q32-08M	32.0	B	100.0	50.0	50.0	1.2	2.10	17100	8	490R-08T308	
	08	32	5.5	0	10	490-100Q32-08H	32.0	B	100.0	50.0	50.0	1.2	2.10	17100	10	490R-08T308
14	32	10.0	1	5	490-100Q32-14L	32.0	B	100.0	50.0	50.0	3.0	1.44	8900	5	490R-1404	
	14	32	10.0	1	7	490-100Q32-14M	32.0	B	100.0	50.0	50.0	3.0	1.44	8900	7	490R-1404
14	32	10.0	1	10	490-100Q32-14H	32.0	B	100.0	50.0	50.0	3.0	1.44	8900	10	490R-1404	
	08	40	5.5	0	8	490-125Q40-08L	40.0	B	125.0	63.0	63.0	1.2	4.56	15200	8	490R-08T308
08	40	5.5	0	10	490-125Q40-08M	40.0	B	125.0	63.0	63.0	1.2	4.56	15200	10	490R-08T308	
	08	40	5.5	0	12	490-125Q40-08H	40.0	B	125.0	63.0	63.0	1.2	4.56	15200	12	490R-08T308
14	40	10.0	1	6	490-125Q40-14L	40.0	B	125.0	63.0	63.0	3.0	2.58	7800	6	490R-1404	
	14	40	10.0	1	8	490-125Q40-14M	40.0	B	125.0	63.0	63.0	3.0	2.58	7800	8	490R-1404
14	40	10.0	1	12	490-125Q40-14H	40.0	B	125.0	63.0	63.0	3.0	2.58	7800	12	490R-1404	
	14	40S	10.0	0	8	490-160Q40-14L	40.0	C	66.7	160.0	63.0	3.0	4.42	6800	8	490R-1404
14	40S	10.0	0	12	490-160Q40-14M	40.0	C	66.7	160.0	63.0	3.0	4.42	6800	12	490R-1404	
	14	40S	10.0	0	15	490-160Q40-14H	40.0	C	66.7	160.0	63.0	3.0	4.42	6800	15	490R-1404
200.0	14	60	10.0	0	10	490-200Q60-14L	60.0	C	101.6	200.0	63.0	3.0	7.35	6000	10	490R-1404
	14	60	10.0	0	16	490-200Q60-14M	60.0	C	101.6	200.0	63.0	3.0	7.35	6000	16	490R-1404
250.0	14	60	10.0	0	12	490-250Q60-14L	60.0	C	101.6	250.0	63.0	3.0	11.26	5300	12	490R-1404
	14	60	10.0	0	18	490-250Q60-14M	60.0	C	101.6	250.0	63.0	3.0	11.26	5300	18	490R-1404

