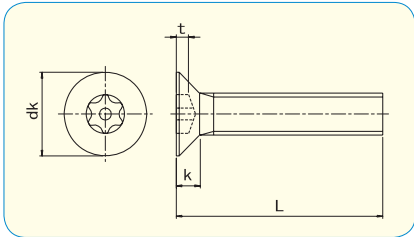




# PIN-FLAT TRX BOLT



● **Material**  
Stainless Steel A2



	M3	M4	M5	M6	M8
dk	5.5	8.4	9.3	11.3	15.8
k	1.65	2.7	2.7	3.3	4.65
Drive Size	T10	T20	T25	T30	T40



RoHS Directive Compliance

SIZE	PART #		Box q'ty
	d	L	
M3	6	TX020306	100
	8	TX020308	100
	10	TX020310	100
	12	TX020312	100
	16	TX020316	100
	20	TX020320	100
	25	TX020325	100
M4	8	TX020408	100
	10	TX020410	100
	12	TX020412	100
	16	TX020416	100
	20	TX020420	100
	25	TX020425	100
	30	TX020430	100
M5	10	TX020510	100
	12	TX020512	100
	16	TX020516	100
	20	TX020520	100
	25	TX020525	100
	30	TX020530	100
	40	TX020540	100

SIZE	PART #		Box q'ty
	d	L	
M6	10	TX020610	100
	12	TX020612	100
	16	TX020616	100
	20	TX020620	100
	25	TX020625	100
	30	TX020630	100
	40	TX020640	100
	50	TX020650	100
M8	16	TX020816	100
	20	TX020820	100
	25	TX020825	100
	30	TX020830	100
	40	TX020840	100
	50	TX020850	100

Please see page 40-41 for tools.

- HE
- SP
- OW
- TX
- TW
- SF
- SS
- PH
- TC
- TOOLS
- Order Made