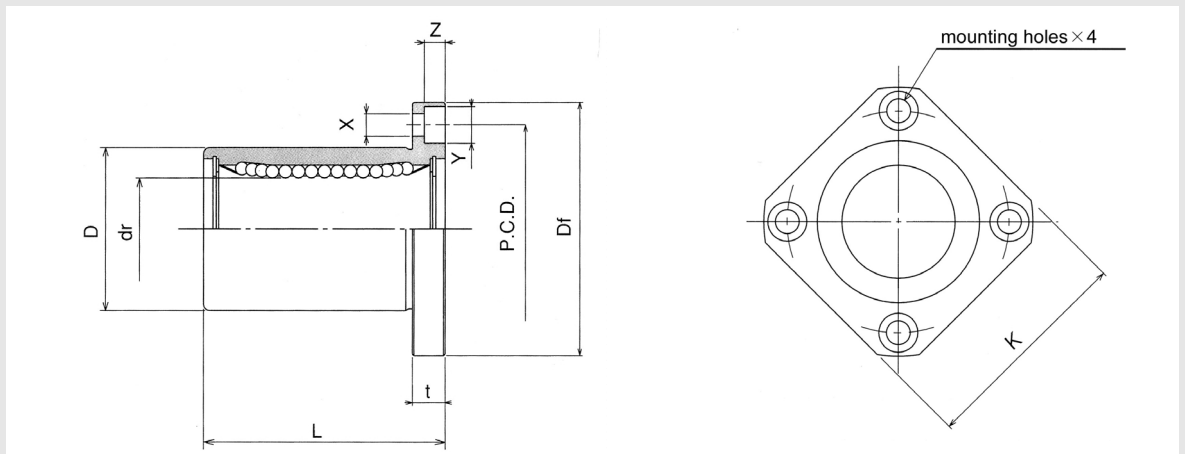


Linear Bushings

Asia type Ball Bushing

SBK Flange type



Model number	Number of ball circuits	dr		D		L		Df	K	
			Permissible tolerance		Permissible tolerance		Permissible tolerance			
SBK6	4	6	0 -0.009	12	0 -0.013	19	±0.3	28	22	
SBK8S	4	8		15		17		32	25	
SBK8	4	8		15		24		32	25	
SBK10	4	10		19	29	40		30		
SBK12	4	12		21	30	42		32		
SBK13	4	13		23	32	43		34		
SBK16	5	16		28	37	48		37		
SBK20	5	20		32	42	54		42		
SBK25	6	25		0 -0.010	40	0 -0.019		59	62	50
SBK30	6	30		45	64	74		58		
SBK35	6	35	0 -0.012	52	0 -0.022	70	82	64		
SBK40	6	40		60		80	96	75		
SBK50	6	50		80		100	116	92		
SBK60	6	60		0 -0.005		90	0 -0.025	110	134	106

① E : Eccentricity (Max)

② S : Squariness

③ C : Basic dynamic load rating

④ Co : Basic static load rating

⑤ M : Mass