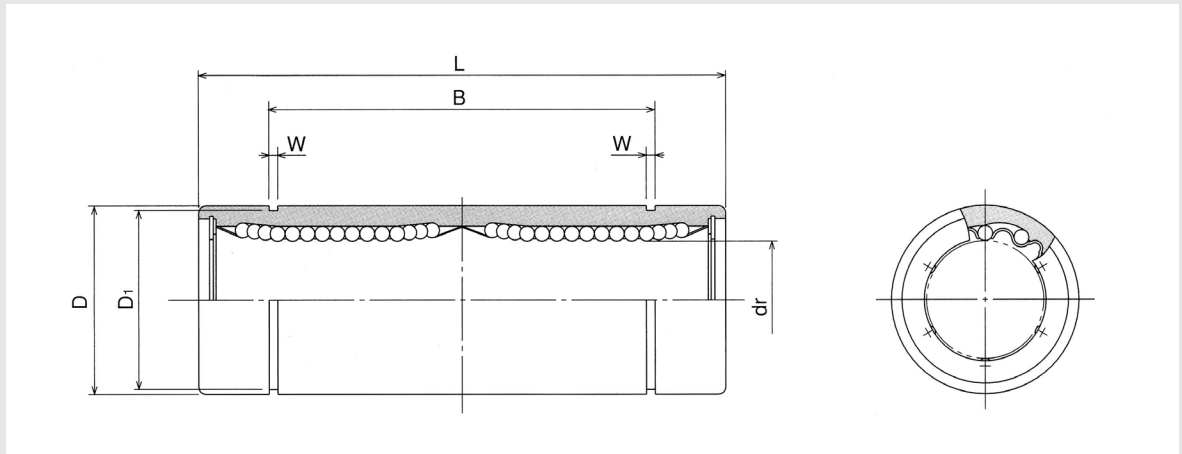


Linear Bushings

Asia type Ball Bushing

SB-L standard type



Model number	Number of ball circuits	dr		D		L		B	
			Permissible tolerance		Permissible tolerance		Permissible tolerance		Permissible tolerance
SB6L	4	6	0 -0.010	12	0	35	0 -0.3	27	0 -0.3
SB8L	4	8		15	-0.013	45		35	
SB10L	4	10		19	0	55		44	
SB12L	4	12		21	-0.016	57		46	
SB13L	4	13		23	0	61		46	
SB16L	5	16	28	0	70	53	0 -0.4		
SB20L	5	20	32	-0.019	80	61			
SB25L	6	25	40	0	112	82			
SB30L	6	30	45	-0.022	123	89			
SB35L	6	35	52	0	135	99			
SB40L	6	40	60	-0.025	154	121	0 -0.4		
SB50L	6	50	80	0	192	148			
SB60L	6	60	90	-0.025	211	170			

① E : Eccentricity (Max)

② RC : Permissible radial clearance

③ C : Basic dynamic load rating

④ Co : Basic static load rating

⑤ M : Mass