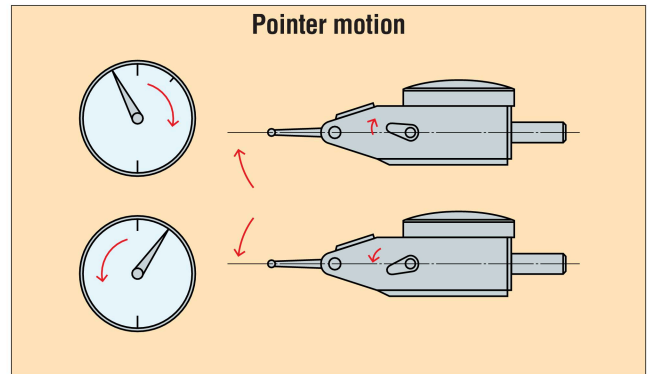


Lever Type Dial Indicators PIC TEST

Change lever type PC series

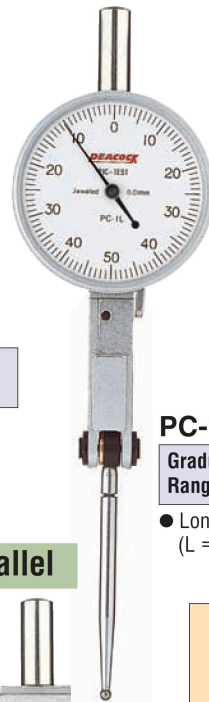
- Miniature Bearing Used
The miniature bearing used as a bearing at the pivot of the contact point to show good indication stability without any effect by rod play.
- O-ring used
Oil resistance is enhanced by seating the O-ring in the turning section of the outer frame.



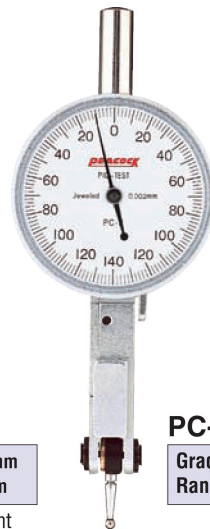
PC-1A
Graduation: 0.01mm
Range: 0.5mm



PC-1B
Graduation: 0.01mm
Range: 0.8mm



PC-1L
Graduation: 0.01mm
Range: 1.0mm
● Long contact point
(L = 43.0mm)



PC-2
Graduation: 0.002mm
Range: 0.28mm

Parallel

Parallel
New

Parallel



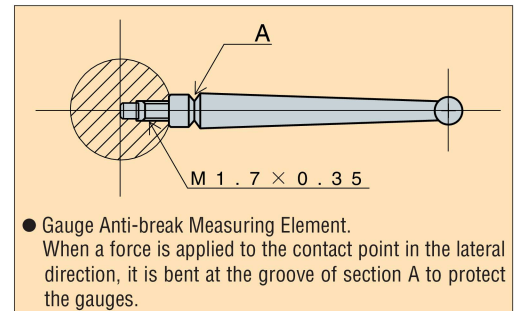
PC-3
Graduation: 0.01mm
Range: 0.5mm



PC-3L
Graduation: 0.01mm
Range: 1.0mm
● Contact point
(XPIL-2)



PC-4
Graduation: 0.002mm
Range: 0.28mm



※ The contact point can simply be replaced (See page P57).

Specifications

| Model | Graduation (mm) | Range (mm) | Reading | Accuracy (μm) | | | Measuring force less than(N) |
|-------|-----------------|------------|-------------|-----------------------------|----------------|----------------|------------------------------|
| | | | | Wide-range forward accuracy | Adjacent error | Backward error | |
| PC-1A | 0.01 | 0.5 | 0 - 25 - 0 | 5 | 5 | 3 | 0.4 |
| PC-1B | 0.01 | 0.8 | 0 - 40 - 0 | 8 | 5 | 3 | 0.4 |
| PC-1L | 0.01 | 1.0 | 0 - 50 - 0 | 10 | 5 | 4 | 0.4 |
| PC-2 | 0.002 | 0.28 | 0 - 140 - 0 | 3 | 2 | 2 | 0.4 |
| PC-3 | 0.01 | 0.5 | 0 - 25 - 0 | 5 | 5 | 3 | 0.4 |
| PC-3L | 0.01 | 1.0 | 0 - 50 - 0 | 10 | 5 | 4 | 0.4 |
| PC-4 | 0.002 | 0.28 | 0 - 140 - 0 | 3 | 2 | 2 | 0.4 |