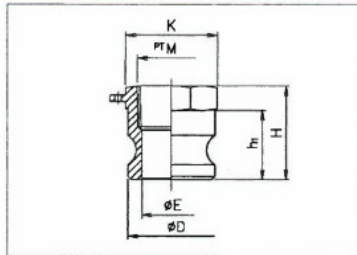


OZC LEVER COUPLINGS

ADAPTER

OZ-A ADAPTER FEMALE THREAD

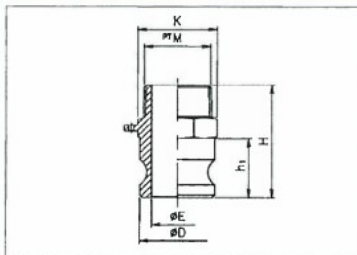


SIZE		M	ØD	ØE	K	h1	H			
mm	inch									
15	1/2	1/2"	32	14	33	26	40			
20	3/4	3/4"	32	21	33	26	40			
25	1	1"	37	24	38	34	49			
32	1-1/4	1-1/4"	45	28	48	40	54			
40	1-1/2	1-1/2"	53	36	55	41	56			
50	2	2"	63	45	72	48	62			
65	2-1/2	2-1/2"	76	56	85	49	85			
80	3	3"	92	72	96	51	70			
100	4	4"	120	97	127	53	78			
125	5	5"	146	122	154	55	79			
150	6	6"	176	150	185	60	86			
200	8	8"	241	204	246	83	111			

UNIT : mm

- Designed to be serviceable for pipe with male thread or nipple with male thread for hose.
- Please use dust cap in order to prevent abrasion and provide all inside surface with complete protection from dust, dirt or other foreign matter.

OZ-F ADAPTER MALE THREAD

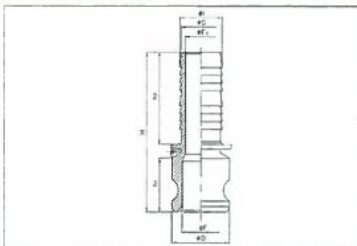


SIZE		M	ØD	ØE	K	h1	H			
mm	inch									
15	1/2	1/2"	32	14	33	26	60			
20	3/4	3/4"	32	21	33	26	60			
25	1	1"	37	24	38	34	71			
32	1-1/4	1-1/4"	45	28	48	40	78			
40	1-1/2	1-1/2"	53	36	55	41	79			
50	2	2"	63	45	65	48	88			
65	2-1/2	2-1/2"	76	56	82	49	99			
80	3	3"	92	72	96	51	102			
100	4	4"	120	97	127	53	114			
125	5	5"	146	121	154	55	122			
150	6	6"	176	150	185	60	129			

UNIT : mm

- Designed to be serviceable for pipe with female thread or socket.
- Please use dust cap in order to prevent abrasion and provide all inside surface with complete protection from dust, dirt or other foreign matter.

OZ-E ADAPTER HOSE SHANK

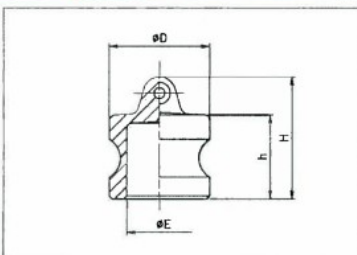


SIZE		M	ØD	ØF	ØF1	ØG	ØI	h1	h2	H
mm	inch									
20	3/4	3/4"	32	21	14	19	21	27	51	89
25	1	1"	37	24	20	25	27	34	60	104
32	1-1/4	1-1/4"	45	29	25	32	34	40	64	115
40	1-1/2	1-1/2"	53	35	32	38	40	43	66	119
50	2	2"	63	45	43	50	53	46	77	135
65	2-1/2	2-1/2"	76	56	56	67	67	50	94	159
80	3	3"	92	68	68	79	79	52	103	170
100	4	4"	120	97	92	105	105	55	112	183
125	5	5"	146	121	117	130	130	55	127	200
150	6	6"	176	147	142	155	155	60	142	221
200	8	8"	241	204	186	208	208	85	170	278

UNIT : mm

- This is designed with shank end which can be attached directly to uncoupled rubber hose or vinyl chloride hose with any type clamps or bands.
- Please use dust cap in order to prevent abrasion and provide all inside surface with complete protection from dust, dirt or other foreign matter.
- The hose barbs styles are subject to body material and size.

OZ-DP ADAPTER DUST PLUG



SIZE		M	ØD	ØE	h	H			
mm	inch								
20	3/4	3/4"	32	21	23	34			
25	1	1"	37	24	31	44			
32	1-1/4	1-1/4"	45	28	38	52			
40	1-1/2	1-1/2"	53	36	39	56			
50	2	2"	63	45	43	63			
65	2-1/2	2-1/2"	76	56	47	65			
80	3	3"	92	72	48	68			
100	4	4"	120	97	50	72			
125	5	5"	146	123	53	86			
150	6	6"	176	150	60	95			
200	8	8"	241	204	83	120			

UNIT : mm

- Designed for couplers Type "OZ-D, OZ-C, OZ-B"
- This is used to protected female coupler from dust.
- Please use it without internal pressure.
- Size 1/2" and 3/4" are common dust plug.

Available NPT thread, Standard thread type is BSP

Drawings and dimensions are Stainless steel coupling as reference. Please request us the detail drawings if you need.