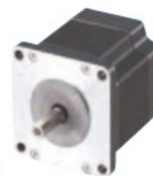


# Step Angle 0.72°

Motor Frame Size 42 mm (1.65 in.), 60 mm (2.36 in.), 85 mm (3.35 in.)

## PK Series Standard Type



- 20 mm (0.79 in.)
- 28 mm (1.10 in.)
- 35 mm (1.38 in.)
- 42 mm (1.65 in.)
- 50 mm (1.97 in.)
- 56.4 mm (2.22 in.)
- 60 mm (2.36 in.)
- 85 mm (3.35 in.)
- 90 mm (3.54 in.)

### Specifications (RoHS)



Motor Frame Size mm (in.)	Model • Single Shaft/Double Shaft • with TTL Type Encoder • with Differential Type Encoder	Connection Type	Maximum Holding Torque		Rated Current A/phase	Rotor Inertia J		Motor Lead Wires (Pins)	Corresponding Motor & Driver Package
			N·m	oz·in		kg·m <sup>2</sup>	oz·in <sup>2</sup>		RK Series CRK Series (Pulse/Built-In Program)
42 (1.65)	PK543N□W PK543NAW-R□ PK543NAW-R27L	New Pentagon (Bipolar)	0.13	18.4	0.75	35×10 <sup>-7</sup>	0.191	5	CRK543□P CRK543□KP CRK543AP-R27 CRK543RKP
	PK544N□W PK544NAW-R□ PK544NAW-R27L		0.18	25		54×10 <sup>-7</sup>	0.3		CRK544□P CRK544□KP CRK544AP-R27 CRK544RKP
	PK545N□W PK545NAW-R□ PK545NAW-R27L		0.24	34		68×10 <sup>-7</sup>	0.37		CRK545□P CRK545□KP CRK545AP-R27 CRK545RKP
60 (2.36)	PK564N□W PK564NAW-R□ PK564NAW-R27L		0.42	59	1.4	175×10 <sup>-7</sup>	0.96		CRK564□P CRK564□KP CRK564AP-R27 CRK564RKP
	PK566N□W PK566NAW-R□ PK566NAW-R27L		0.83	117		280×10 <sup>-7</sup>	1.53		CRK566□P CRK566□KP CRK566AP-R27 CRK566RKP
	PK569N□W PK569NAW-R□ PK569NAW-R27L		1.66	230		560×10 <sup>-7</sup>	3.1		CRK569□P CRK569□KP CRK569AP-R27 CRK569RKP
85 (3.35)	PK596□E PK596AE-R27		2.1	290	4.1	1400×10 <sup>-7</sup>	7.7		RK596□□E RK596A□□E-R27
	PK599□E PK599AE-R27		4.1	580		2700×10 <sup>-7</sup>	14.8		RK599□□E RK599A□□E-R27
	PK5913□E PK5913AE-R27		6.3	890		4000×10 <sup>-7</sup>	22		RK5913□□E RK5913A□□E-R27

- Warnings and connections → Page A-288
- Encoder specifications → Page A-17
- See the page for the corresponding motor and driver package for speed-torque characteristics and dimensions.
- The dimensions of a motor with an encoder can be found on page A-20.
- Enter the **A** (single shaft) or **B** (double shaft) in the box (□) within the model name.
- Enter the encoder code (**17**, **18**, **27**, or **28**) in the box (□) within the model name.
- Enter the **A** (single-phase 100-115 VAC) or **C** (single-phase 200-230 VAC) in the box (□) within the model name.
- Product Number Code → Page A-278
- \*1 Adopted for motor frame size 28 mm (1.10 in.) and 60 mm (2.36 in.) products.
- \*2 Adopted for motor frame size 42 mm (1.65 in.) products.
- \*3 CE Marking is applied to a corresponding motor and driver package product.

### Introduction of Stepping Motor and Driver Packages

Stepping motor and driver packages are available. Packages are outfitted with drivers specifically designed to obtain the motor's maximum performance.

**AC Input**  
Motor and Driver Package  
RK Series → Page A-78



**DC Input**  
Motor and Driver Package  
CRK Series → Page A-168



Pulse Input



Built-In Controller