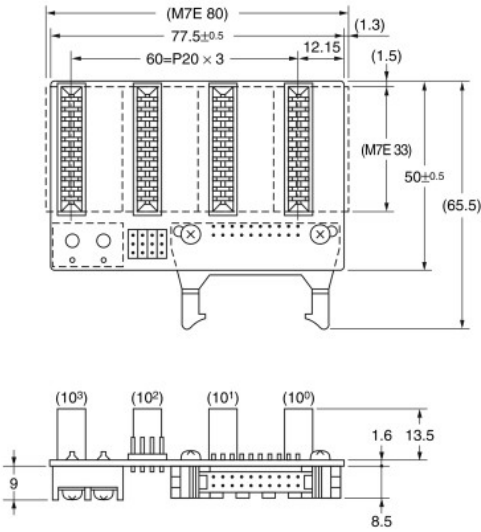


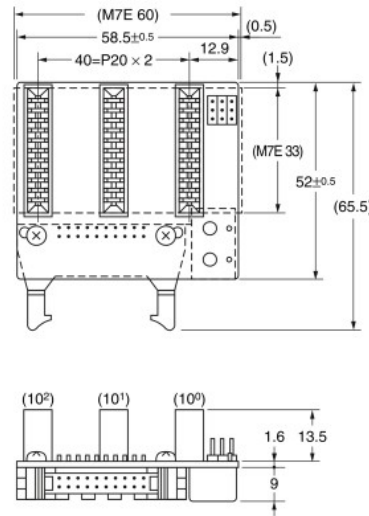
Dimensions

Note: All units are in millimeters unless otherwise indicated.

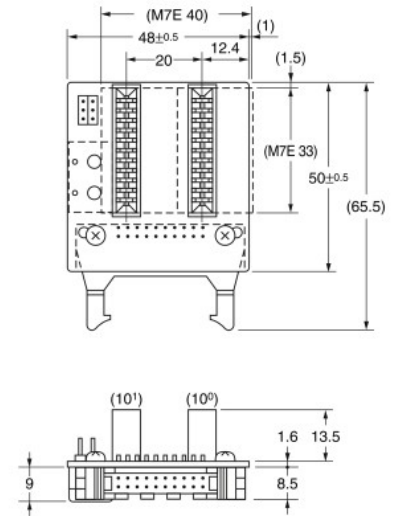
M7E-01MB4-S2



M7E-01MB3-S2

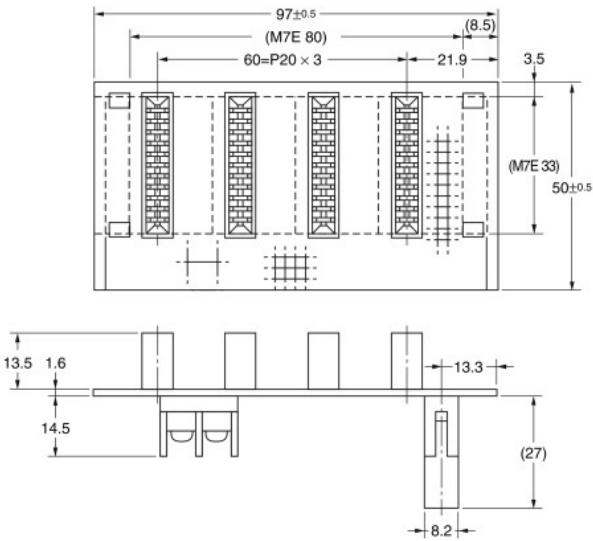


M7E-01MB2-S2



- Note: 1. Dotted lines indicate the mounting dimensions of the M7E.
 2. Tolerance is ±0.4 mm unless otherwise specified.

M7E-01MB4-D



- Note: 1. Dotted lines indicate the mounting dimensions of the M7E.
 2. Tolerance is ±0.4 mm unless otherwise specified.
 3. Short-circuit Sockets for DP control are not mounted.

ALL DIMENSIONS SHOWN ARE IN MILLIMETERS.
 To convert millimeters into inches, multiply by 0.03937. To convert grams into ounces, multiply by 0.03527.

In the interest of product improvement, specifications are subject to change without notice.