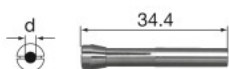


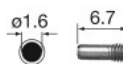
CHM Group



Fit to _____
BMH-300

| Code No. | Model | I.D. |
|----------|-----------|--------|
| 90910 | CHM-1.0 | ø1.0 |
| 90916 | CHM-1.6 | ø1.6 |
| 90920 | CHM-2.0 | ø2.0 |
| 90992 | CHM-2.35 | ø2.35 |
| 90930 | CHM-3.0 | ø3.0 |
| 90993 | CHM-3.175 | ø3.175 |

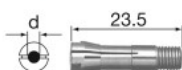
K-253



Fit to _____
MFC-300M

| Code No. | Model | I.D. |
|----------|-------|------|
| 90016 | K-253 | ø1.6 |

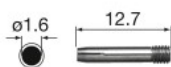
CHS Group



Fit to _____
ERA-270 · IMPULSE SERIES

| Code No. | Model | I.D. |
|----------|-----------|--------|
| 90508 | CHS-0.8 | ø0.8 |
| 90509 | CHS-0.9 | ø0.9 |
| 90510 | CHS-1.0 | ø1.0 |
| 90511 | CHS-1.1 | ø1.1 |
| 90512 | CHS-1.2 | ø1.2 |
| 90513 | CHS-1.3 | ø1.3 |
| 90514 | CHS-1.4 | ø1.4 |
| 90515 | CHS-1.5 | ø1.5 |
| 90516 | CHS-1.6 | ø1.6 |
| 90517 | CHS-1.7 | ø1.7 |
| 90518 | CHS-1.8 | ø1.8 |
| 90519 | CHS-1.9 | ø1.9 |
| 90520 | CHS-2.0 | ø2.0 |
| 90521 | CHS-2.1 | ø2.1 |
| 90522 | CHS-2.2 | ø2.2 |
| 90523 | CHS-2.3 | ø2.3 |
| 90592 | CHS-2.35 | ø2.35 |
| 90524 | CHS-2.4 | ø2.4 |
| 90525 | CHS-2.5 | ø2.5 |
| 90526 | CHS-2.6 | ø2.6 |
| 90527 | CHS-2.7 | ø2.7 |
| 90528 | CHS-2.8 | ø2.8 |
| 90529 | CHS-2.9 | ø2.9 |
| 90530 | CHS-3.0 | ø3.0 |
| 90593 | CHS-3.175 | ø3.175 |

K-252



Fit to _____
MFC-300S

| Code No. | Model | I.D. |
|----------|-------|------|
| 90316 | K-252 | ø1.6 |

CAUTION

Electric System

Air System

Ultrasonic

General Parts

Exclusive Tools