

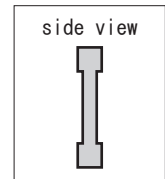
# I-BEAM TYPE PRECISION STRAIGHT EDGE



**USE** • Measurement of flatness, parallelism and straightness

**MATERIAL**  
• Machine grade carbon steel

**FEATURES**  
• Inspection certificate attached



Grade A / Hardened ● Hardness:HV490 ~ 620

Order No.	Model No.	Nominal Size (mm)	Straightness (μm)	Length (mm)	Height (mm)	Width (mm)	Weight
004113	IBM-A500H	500	7	500	50	10	1.5kg
004115	IBM-A750H	750	9.5	750	50	10	3.2kg
004117	IBM-A1000H	1000	12	1000	60	12	5kg
004119	IBM-A1500H	1500	17	1500	70	15	8.5kg
004121	IBM-A2000H	2000	22	2000	90	20	19kg
004122	IBM-A2500H	2500	27	2500	100	20	27kg
004123	IBM-A3000H	3000	32	3000	120	20	44kg

Grade A / Non-hardened

Straightness  $(2 + \frac{L}{100}) \mu m$  (L: Nominal Size)

Order No.	Model No.	Nominal Size (mm)	Straightness (μm)	Length (mm)	Height (mm)	Width (mm)	Weight
004013	IBM-A500	500	7	500	50	10	1.5kg
004015	IBM-A750	750	9.5	750	50	10	3.2kg
004017	IBM-A1000	1000	12	1000	60	12	5kg
004019	IBM-A1500	1500	17	1500	70	15	8.5kg
004021	IBM-A2000	2000	22	2000	90	20	19kg
004022	IBM-A2500	2500	27	2500	90	20	27kg
004023	IBM-A3000	3000	32	3000	120	20	44kg

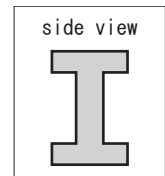
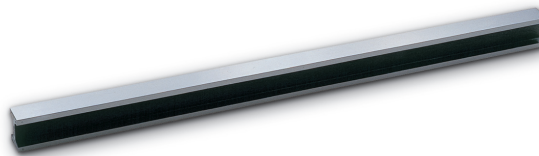
# RAIL TYPE PRECISION STRAIGHT EDGE



**USE** • Measurement of flatness, parallelism and straightness

**MATERIAL**  
• Machine grade carbon steel

**FEATURES**  
• Usable for precision machine installation, flatness inspection of surface plate etc  
• Ground finish  
• Inspection certificate attached



Grade A / Hardened ● Hardness: HV490 ~ 620

Straightness  $(2 + \frac{L}{250}) \mu m$  (L: Nominal Size)

Order No.	Model No.	Nominal Size (mm)	Straightness (μm)	Length (mm)	Height (mm)	Width (mm)	Weight
004417	R-A1000H	1000	6	1000	75	50	18.5kg
004419	R-A1500H	1500	8	1500	90	50	33kg
004421	R-A2000H	2000	10	2000	120	50	56kg
004422	R-A2500H	2500	12	2500	140	50	76.5kg
004423	R-A3000H	3000	14	3000	150	50	103kg

Grade A / Non-hardened

Straightness  $(2 + \frac{L}{250}) \mu m$  (L: Nominal Size)

Order No.	Model No.	Nominal Size (mm)	Straightness (μm)	Length (mm)	Height (mm)	Width (mm)	Weight
004317	R-A1000	1000	6	1000	75	50	18.5kg
004319	R-A1500	1500	8	1500	90	50	33kg
004321	R-A2000	2000	10	2000	120	50	56kg
004322	R-A2500	2500	12	2500	140	50	76.5kg
004323	R-A3000	3000	14	3000	150	50	103kg

Grade B / Hardened ● Hardness: HV490 ~ 620

Straightness  $(4 + \frac{L}{50}) \mu m$  (L: Nominal Size)

Order No.	Model No.	Nominal Size (mm)	Straightness (μm)	Length (mm)	Height (mm)	Width (mm)	Weight
004617	R-B1000H	1000	22	1000	75	50	18.5kg
004619	R-B1500H	1500	34	1500	90	50	33kg
004621	R-B2000H	2000	44	2000	120	50	56kg
004622	R-B2500H	2500	54	2500	140	50	76.5kg
004623	R-B3000H	3000	64	3000	150	50	103kg

Grade B / Non-hardened

Straightness  $(4 + \frac{L}{50}) \mu m$  (L: Nominal Size)

Order No.	Model No.	Nominal Size (mm)	Straightness (μm)	Length (mm)	Height (mm)	Width (mm)	Weight
004517	R-B1000	1000	24	1000	75	50	18.5kg
004519	R-B1500	1500	34	1500	90	50	33kg
004521	R-B2000	2000	44	2000	120	50	56kg
004522	R-B2500	2500	54	2500	140	50	76.5kg
004523	R-B3000	3000	64	3000	150	50	103kg