

RoHS Compliant

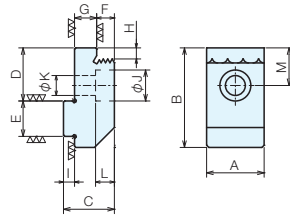
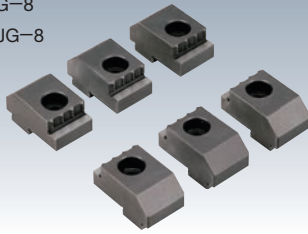
No.E-940B



# Lock-Tight 5 Axis Machine Vises

## Step Jaw Plates (Grid Type)

LT5AU-75SJG-8  
LT5AU-100SJG-8



### Specifications

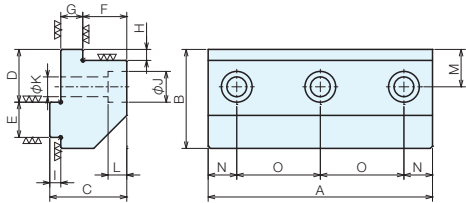
Order No.	No.	Compatible Vises	A	B	C	D	E	F	G
93019	LT5AU-75SJG-8	LT5AU-75(F,FM)	26	45	23	24	16	8	10
88807	LT5AU-100SJG-8	LT5AU-100(M),100F(M)	26	45	23	24	16	8	10

No.	H	I	J	K	L	M	No. Supplied	Weight (kg)
LT5AU-75SJG-8	5	5	14	9	8.5	17	2 pieces per set	0.3
LT5AU-100SJG-8	5	5	14	9	8.5	17	6 pieces per set	0.85

## Step Jaw Plates (Depth 20)

LT5AU-75SJ-20  
LT5AU-100SJ-20



### Specifications

(2 pieces per set)

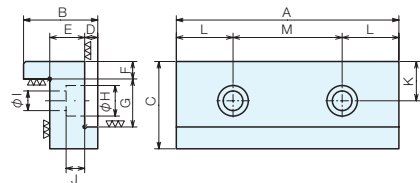
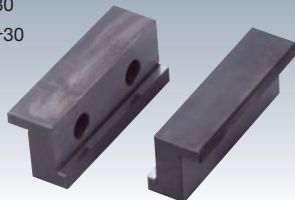
Order No.	No.	Compatible Vises	A	B	C	D	E	F	G	H
93020	LT5AU-75SJ-20	LT5AU-75(F,FM)	75	45	35	24	16	20	10	5
88808	LT5AU-100SJ-20	LT5AU-100(M),100F(M)	102	45	35	24	16	20	10	5

No.	I	J	K	L	M	N	O	Weight (kg)
LT5AU-75SJ-20	5	14	9	8.5	17	13	49	1.3
LT5AU-100SJ-20	5	14	9	8.5	17	13	38	1.5

## Step Jaw Plates (Depth 30)

LT5AU-75SJ-30  
LT5AU-100SJ-30



### Specifications

(2 pieces per set)

Order No.	No.	Compatible Vises	A	B	C	D	E	F	G
93021	LT5AU-75SJ-30	LT5AU-75	75	34	40	6	16	8	22
88809	LT5AU-100SJ-30	LT5AU-100(M)	102	34	40	6	16	8	22

No.	H	I	J	K	L	M	Weight (kg)
LT5AU-75SJ-30	14	9	8.5	18	21.5	32	0.9
LT5AU-100SJ-30	14	9	8.5	18	26	50	1.7