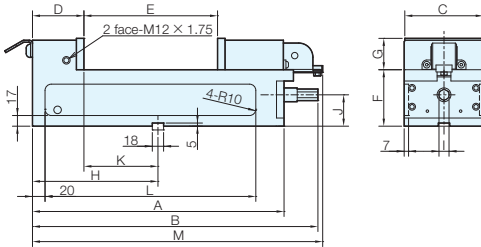
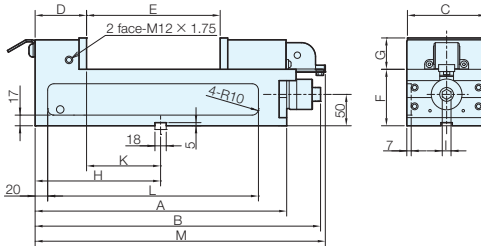


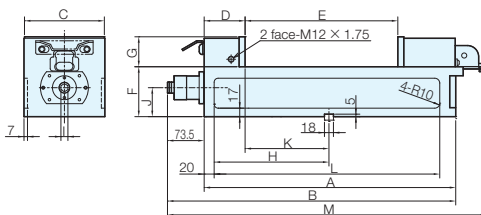
LTCV mechanical type



LTCV-(S)H hydraulic type



LTCV-TH hydraulic type



RoHS Compliant

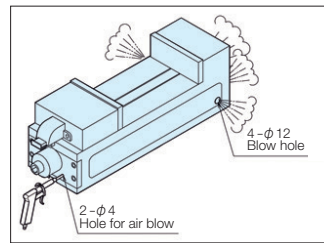


No.E-990

Lock-Tight CV Precision Machine Vises

Accessories Standard guide block (2 pieces per set) compatible T-slot width 18 mm ... 1 set
 Standard clamping set (2 pieces per set) compatible T-slot width 18 mm ... 2 sets
 Handle ... 1 piece, Eyebolt for lifting up ... 1 set

- As long as the models are the same, all vises can be matched within 0.01mm or less in terms of height and distance from the guide key to the stationary jaw plate. (All vises have matched specifications as standard)
- Chips are prevented from entering into the main body by a retractable chip cover.
- The workpiece is prevented from lifting up by anti-floating mechanism.
- High accuracy that surpasses the former JISO standards.
- Sliding surfaces have been flame heat treated (HRC45) and offer excellent wear resistance.
- The main body is ductile, preventing bending and breakage during tightening.
- The main body and stationary jaw have a one piece construction that maintains high rigidity.
- The jaw opening is nearly double that of vises in the same class, allowing clamping of large workpieces.
- Has a large jaw depth, enabling secure clamping of tall workpieces.
- Fitted with a hydraulic compensation mechanism as an emergency measure when the clamping force drops.
- Coolant oil and fine chips that get into the main body can be taken away from blow holes easily.
- The mechanical type allows for operation by handle on the stationary jaw side, and the LTCV-TH allows for operation by handle on the stationary jaw side that has a hydraulic unit. Operation from the stationary jaw side reduces the workpiece desorption distance, shortens the set-up time, and reduces the load on the worker.
- In the SJ type (LTCV-S, SH), the jaw plates from the standard type (LTCV, LTCV-H) are replaced with step jaw plates.

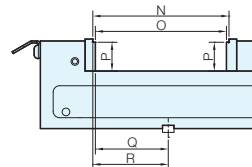


Air blow mechanism



On the mechanical type, the handle can also be operated from the stationary jaw side.

LTCV-S, SH SJ type



Base Elements

Clamp Units

Clamping Parts

Machine Vises

Drilling Vises

Vibration Isolation

Surface Plates and Measurement Instruments

Index